



PROPERTY AND CASUALTY COMPANIES - ASSOCIATION EDITION

ANNUAL STATEMENT
FOR THE YEAR ENDED DECEMBER 31, 2020
OF THE CONDITION AND AFFAIRS OF THE
NOVA Casualty Company

NAIC Group Code 0088 (Current) 0088 (Prior) NAIC Company Code 42552 Employer's ID Number 16-1140177
Organized under the Laws of New York, State of Domicile or Port of Entry NY
Country of Domicile United States of America
Incorporated/Organized 09/13/1979 Commenced Business 07/18/1980
Statutory Home Office 726 Exchange Street, Suite 1020 Buffalo, NY, US 14210-1466
Main Administrative Office 440 Lincoln Street Worcester, MA, US 01653-0002
Mail Address 440 Lincoln Street Worcester, MA, US 01653-0002
Primary Location of Books and Records 440 Lincoln Street Worcester, MA, US 01653-0002
Internet Website Address WWW.HANOVER.COM
Statutory Statement Contact Dennis M. Hazelwood DHAZELWOOD@HANOVER.COM

OFFICERS

President John Conner Roche Executive Vice President & Treasurer Ann Kirkpatrick Tripp
Secretary Charles Frederick Cronin

OTHER

Mark Leo Berthiaume, Executive Vice President Jeffrey Mark Farber, Executive Vice President & CFO Dennis Francis Kerrigan Jr. #, Executive Vice President & GC
Denise Maureen Lowsley, Executive Vice President Bryan James Salvatore, Executive Vice President

DIRECTORS OR TRUSTEES

Warren Ellison Barnes Mark Leo Berthiaume Steven Frank Cibelli
Jeffrey Mark Farber Dennis Francis Kerrigan Jr. # Richard William Lavey
Denise Maureen Lowsley John Joseph Risavi John Conner Roche
Bryan James Salvatore Helen Ryan Savaiano Ann Kirkpatrick Tripp
Mark Joseph Welzenbach

State of Massachusetts SS:
County of Worcester

The officers of this reporting entity being duly sworn, each depose and say that they are the described officers of said reporting entity, and that on the reporting period stated above, all of the herein described assets were the absolute property of the said reporting entity, free and clear from any liens or claims thereon, except as herein stated, and that this statement, together with related exhibits, schedules and explanations therein contained, annexed or referred to, is a full and true statement of all the assets and liabilities and of the condition and affairs of the said reporting entity as of the reporting period stated above, and of its income and deductions therefrom for the period ended, and have been completed in accordance with the NAIC Annual Statement Instructions and Accounting Practices and Procedures manual except to the extent that: (1) state law may differ; or, (2) that state rules or regulations require differences in reporting not related to accounting practices and procedures, according to the best of their information, knowledge and belief, respectively. Furthermore, the scope of this attestation by the described officers also includes the related corresponding electronic filing with the NAIC, when required, that is an exact copy (except for formatting differences due to electronic filing) of the enclosed statement. The electronic filing may be requested by various regulators in lieu of or in addition to the enclosed statement.

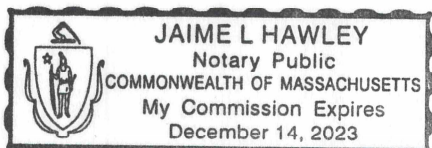
John Conner Roche
President

Charles Frederick Cronin
Secretary

Subscribed and sworn to before me this 2nd day of February, 2021

Jaime L. Hawley
Notary
December 14, 2023

- a. Is this an original filing? Yes [ X ] No [ ]
b. If no,
1. State the amendment number.....
2. Date filed .....
3. Number of pages attached.....



ANNUAL STATEMENT FOR THE YEAR 2020 OF THE NOVA CASUALTY COMPANY

**ASSETS**

	Current Year			Prior Year
	1 Assets	2 Nonadmitted Assets	3 Net Admitted Assets (Cols. 1 - 2)	4 Net Admitted Assets
1. Bonds (Schedule D) .....	37,207,452	0	37,207,452	40,022,917
2. Stocks (Schedule D):				
2.1 Preferred stocks .....	0	0	0	0
2.2 Common stocks .....	55,801,534	0	55,801,534	53,606,228
3. Mortgage loans on real estate (Schedule B):				
3.1 First liens .....	0	0	0	0
3.2 Other than first liens .....	0	0	0	0
4. Real estate (Schedule A):				
4.1 Properties occupied by the company (less \$ .....0 encumbrances) .....	0	0	0	0
4.2 Properties held for the production of income (less \$ .....0 encumbrances) .....	0	0	0	0
4.3 Properties held for sale (less \$ .....0 encumbrances) .....	0	0	0	0
5. Cash (\$ .....2,814,997 , Schedule E - Part 1), cash equivalents (\$ .....832,219 , Schedule E - Part 2) and short-term investments (\$ .....0 , Schedule DA) .....	3,647,216	0	3,647,216	3,326,238
6. Contract loans (including \$ .....0 premium notes) .....	0	0	0	0
7. Derivatives (Schedule DB) .....	0	0	0	0
8. Other invested assets (Schedule BA) .....	91,319	91,319	0	0
9. Receivable for securities .....	6,100	0	6,100	22,932
10. Securities lending reinvested collateral assets (Schedule DL) .....	0	0	0	0
11. Aggregate write-ins for invested assets .....	0	0	0	0
12. Subtotals, cash and invested assets (Lines 1 to 11) .....	96,753,621	91,319	96,662,302	96,978,315
13. Title plants less \$ .....0 charged off (for Title insurers only) .....	0	0	0	0
14. Investment income due and accrued .....	235,632	0	235,632	273,581
15. Premiums and considerations:				
15.1 Uncollected premiums and agents' balances in the course of collection .....	0	0	0	0
15.2 Deferred premiums and agents' balances and installments booked but deferred and not yet due (including \$ .....0 earned but unbilled premiums) .....	0	0	0	0
15.3 Accrued retrospective premiums (\$ .....0 ) and contracts subject to redetermination (\$ .....0 ) .....	0	0	0	0
16. Reinsurance:				
16.1 Amounts recoverable from reinsurers .....	0	0	0	0
16.2 Funds held by or deposited with reinsured companies .....	0	0	0	0
16.3 Other amounts receivable under reinsurance contracts .....	0	0	0	0
17. Amounts receivable relating to uninsured plans .....	0	0	0	0
18.1 Current federal and foreign income tax recoverable and interest thereon .....	0	0	0	9,291
18.2 Net deferred tax asset .....	1,991,604	0	1,991,604	1,236,906
19. Guaranty funds receivable or on deposit .....	0	0	0	0
20. Electronic data processing equipment and software .....	63,830	42,315	21,515	79,851
21. Furniture and equipment, including health care delivery assets (\$ .....0 ) .....	117,635	117,635	0	0
22. Net adjustment in assets and liabilities due to foreign exchange rates .....	0	0	0	0
23. Receivables from parent, subsidiaries and affiliates .....	0	0	0	0
24. Health care (\$ .....0 ) and other amounts receivable .....	0	0	0	0
25. Aggregate write-ins for other than invested assets .....	9,762,723	9,762,723	0	0
26. Total assets excluding Separate Accounts, Segregated Accounts and Protected Cell Accounts (Lines 12 to 25) .....	108,925,045	10,013,992	98,911,053	98,577,944
27. From Separate Accounts, Segregated Accounts and Protected Cell Accounts .....	0	0	0	0
28. Total (Lines 26 and 27) .....	108,925,045	10,013,992	98,911,053	98,577,944
<b>DETAILS OF WRITE-INS</b>				
1101. ....	0	0	0	0
1102. ....				
1103. ....				
1198. Summary of remaining write-ins for Line 11 from overflow page .....	0	0	0	0
1199. Totals (Lines 1101 thru 1103 plus 1198)(Line 11 above) .....	0	0	0	0
2501. Other Non-admitted Assets .....	9,762,723	9,762,723	0	0
2502. ....				
2503. ....				
2598. Summary of remaining write-ins for Line 25 from overflow page .....	0	0	0	0
2599. Totals (Lines 2501 thru 2503 plus 2598)(Line 25 above) .....	9,762,723	9,762,723	0	0

ANNUAL STATEMENT FOR THE YEAR 2020 OF THE NOVA CASUALTY COMPANY  
**LIABILITIES, SURPLUS AND OTHER FUNDS**

	1 Current Year	2 Prior Year
1. Losses (Part 2A, Line 35, Column 8) .....	0	0
2. Reinsurance payable on paid losses and loss adjustment expenses (Schedule F, Part 1, Column 6) .....	0	0
3. Loss adjustment expenses (Part 2A, Line 35, Column 9) .....	0	0
4. Commissions payable, contingent commissions and other similar charges .....	0	0
5. Other expenses (excluding taxes, licenses and fees) .....	0	0
6. Taxes, licenses and fees (excluding federal and foreign income taxes) .....	0	0
7.1 Current federal and foreign income taxes (including \$ .....0 on realized capital gains (losses)) .....	85,742	0
7.2 Net deferred tax liability .....	0	0
8. Borrowed money \$ .....0 and interest thereon \$ .....0 .....	0	0
9. Unearned premiums (Part 1A, Line 38, Column 5) (after deducting unearned premiums for ceded reinsurance of \$ .....138,694,000 and including warranty reserves of \$ .....0 and accrued accident and health experience rating refunds including \$ .....0 for medical loss ratio rebate per the Public Health Service Act) .....	0	0
10. Advance premium .....	0	0
11. Dividends declared and unpaid:		
11.1 Stockholders .....	0	0
11.2 Policyholders .....	0	0
12. Ceded reinsurance premiums payable (net of ceding commissions) .....	3,525,482	431,248
13. Funds held by company under reinsurance treaties (Schedule F, Part 3, Column 20) .....	0	0
14. Amounts withheld or retained by company for account of others .....	0	0
15. Remittances and items not allocated .....	0	0
16. Provision for reinsurance (including \$ .....0 certified) (Schedule F, Part 3, Column 78) .....	0	0
17. Net adjustments in assets and liabilities due to foreign exchange rates .....	0	0
18. Drafts outstanding .....	0	0
19. Payable to parent, subsidiaries and affiliates .....	4,058	56,757
20. Derivatives .....	0	0
21. Payable for securities .....	1,000	400,000
22. Payable for securities lending .....	0	0
23. Liability for amounts held under uninsured plans .....	0	0
24. Capital notes \$ .....0 and interest thereon \$ .....0 .....	0	0
25. Aggregate write-ins for liabilities .....	0	0
26. Total liabilities excluding protected cell liabilities (Lines 1 through 25) .....	3,616,282	888,005
27. Protected cell liabilities .....	0	0
28. Total liabilities (Lines 26 and 27) .....	3,616,282	888,005
29. Aggregate write-ins for special surplus funds .....	0	0
30. Common capital stock .....	4,200,000	4,200,000
31. Preferred capital stock .....	0	0
32. Aggregate write-ins for other than special surplus funds .....	0	0
33. Surplus notes .....	0	0
34. Gross paid in and contributed surplus .....	82,917,091	82,917,091
35. Unassigned funds (surplus) .....	8,177,680	10,572,848
36. Less treasury stock, at cost:		
36.1 .....0 shares common (value included in Line 30 \$ .....0 ) .....	0	0
36.2 .....0 shares preferred (value included in Line 31 \$ .....0 ) .....	0	0
37. Surplus as regards policyholders (Lines 29 to 35, less 36) (Page 4, Line 39) .....	95,294,771	97,689,939
38. TOTALS (Page 2, Line 28, Col. 3) .....	98,911,053	98,577,944
<b>DETAILS OF WRITE-INS</b>		
2501. ....	0	0
2502. ....		
2503. ....		
2598. Summary of remaining write-ins for Line 25 from overflow page .....	0	0
2599. Totals (Lines 2501 thru 2503 plus 2598)(Line 25 above) .....	0	0
2901. ....	0	0
2902. ....		
2903. ....		
2998. Summary of remaining write-ins for Line 29 from overflow page .....	0	0
2999. Totals (Lines 2901 thru 2903 plus 2998)(Line 29 above) .....	0	0
3201. ....	0	0
3202. ....		
3203. ....		
3298. Summary of remaining write-ins for Line 32 from overflow page .....	0	0
3299. Totals (Lines 3201 thru 3203 plus 3298)(Line 32 above) .....	0	0

ANNUAL STATEMENT FOR THE YEAR 2020 OF THE NOVA CASUALTY COMPANY

**STATEMENT OF INCOME**

	1 Current Year	2 Prior Year
<b>UNDERWRITING INCOME</b>		
1. Premiums earned (Part 1, Line 35, Column 4).....	0	0
<b>DEDUCTIONS:</b>		
2. Losses incurred (Part 2, Line 35, Column 7).....	0	0
3. Loss adjustment expenses incurred (Part 3, Line 25, Column 1).....	0	0
4. Other underwriting expenses incurred (Part 3, Line 25, Column 2).....	0	0
5. Aggregate write-ins for underwriting deductions.....	0	0
6. Total underwriting deductions (Lines 2 through 5).....	0	0
7. Net income of protected cells.....	0	0
8. Net underwriting gain or (loss) (Line 1 minus Line 6 plus Line 7).....	0	0
<b>INVESTMENT INCOME</b>		
9. Net investment income earned (Exhibit of Net Investment Income, Line 17).....	1,133,032	1,140,038
10. Net realized capital gains or (losses) less capital gains tax of \$ 45,613 (Exhibit of Capital Gains (Losses) ).....	161,093	(10,097)
11. Net investment gain (loss) (Lines 9 + 10).....	1,294,125	1,129,941
<b>OTHER INCOME</b>		
12. Net gain (loss) from agents' or premium balances charged off (amount recovered \$ 0 amount charged off \$ 0 ).....	0	0
13. Finance and service charges not included in premiums.....	0	0
14. Aggregate write-ins for miscellaneous income.....	0	0
15. Total other income (Lines 12 through 14).....	0	0
16. Net income before dividends to policyholders, after capital gains tax and before all other federal and foreign income taxes (Lines 8 + 11 + 15).....	1,294,125	1,129,941
17. Dividends to policyholders.....	0	0
18. Net income, after dividends to policyholders, after capital gains tax and before all other federal and foreign income taxes (Line 16 minus Line 17).....	1,294,125	1,129,941
19. Federal and foreign income taxes incurred.....	320,615	294,635
20. Net income (Line 18 minus Line 19)(to Line 22).....	973,510	835,306
<b>CAPITAL AND SURPLUS ACCOUNT</b>		
21. Surplus as regards policyholders, December 31 prior year (Page 4, Line 39, Column 2).....	97,689,939	91,115,786
22. Net income (from Line 20).....	973,510	835,306
23. Net transfers (to) from Protected Cell accounts.....	0	0
24. Change in net unrealized capital gains or (losses) less capital gains tax of \$ 9,591.....	2,231,387	2,867,880
25. Change in net unrealized foreign exchange capital gain (loss).....	0	0
26. Change in net deferred income tax.....	764,289	(660,871)
27. Change in nonadmitted assets (Exhibit of Nonadmitted Assets, Line 28, Col. 3).....	(3,364,354)	3,486,192
28. Change in provision for reinsurance (Page 3, Line 16, Column 2 minus Column 1).....	0	0
29. Change in surplus notes.....	0	0
30. Surplus (contributed to) withdrawn from protected cells.....	0	0
31. Cumulative effect of changes in accounting principles.....	0	0
32. Capital changes:		
32.1 Paid in.....	0	0
32.2 Transferred from surplus (Stock Dividend).....	0	0
32.3 Transferred to surplus.....	0	0
33. Surplus adjustments:		
33.1 Paid in.....	0	45,646
33.2 Transferred to capital (Stock Dividend).....	0	0
33.3 Transferred from capital.....	0	0
34. Net remittances from or (to) Home Office.....	0	0
35. Dividends to stockholders.....	(3,000,000)	0
36. Change in treasury stock (Page 3, Lines 36.1 and 36.2, Column 2 minus Column 1).....	0	0
37. Aggregate write-ins for gains and losses in surplus.....	0	0
38. Change in surplus as regards policyholders for the year (Lines 22 through 37).....	(2,395,168)	6,574,153
39. Surplus as regards policyholders, December 31 current year (Line 21 plus Line 38) (Page 3, Line 37).....	95,294,771	97,689,939
<b>DETAILS OF WRITE-INS</b>		
0501. ....	0	0
0502. ....	0	0
0503. ....	0	0
0598. Summary of remaining write-ins for Line 5 from overflow page.....	0	0
0599. Totals (Lines 0501 thru 0503 plus 0598)(Line 5 above).....	0	0
1401. ....	0	0
1402. ....	0	0
1403. ....	0	0
1498. Summary of remaining write-ins for Line 14 from overflow page.....	0	0
1499. Totals (Lines 1401 thru 1403 plus 1498)(Line 14 above).....	0	0
3701. ....	0	0
3702. ....	0	0
3703. ....	0	0
3798. Summary of remaining write-ins for Line 37 from overflow page.....	0	0
3799. Totals (Lines 3701 thru 3703 plus 3798)(Line 37 above).....	0	0

ANNUAL STATEMENT FOR THE YEAR 2020 OF THE NOVA CASUALTY COMPANY

**CASH FLOW**

	1	2
	Current Year	Prior Year
<b>Cash from Operations</b>		
1. Premiums collected net of reinsurance .....	3,094,234	(4,369,390)
2. Net investment income .....	1,173,161	1,171,380
3. Miscellaneous income .....	0	0
4. Total (Lines 1 through 3) .....	4,267,395	(3,198,010)
5. Benefit and loss related payments .....	0	0
6. Net transfers to Separate Accounts, Segregated Accounts and Protected Cell Accounts .....	0	0
7. Commissions, expenses paid and aggregate write-ins for deductions .....	0	0
8. Dividends paid to policyholders .....	0	0
9. Federal and foreign income taxes paid (recovered) net of \$ ..... 45,613 tax on capital gains (losses) .....	271,195	312,553
10. Total (Lines 5 through 9) .....	271,195	312,553
11. Net cash from operations (Line 4 minus Line 10) .....	3,996,200	(3,510,563)
<b>Cash from Investments</b>		
12. Proceeds from investments sold, matured or repaid:		
12.1 Bonds .....	6,770,884	6,668,514
12.2 Stocks .....	0	0
12.3 Mortgage loans .....	0	0
12.4 Real estate .....	0	0
12.5 Other invested assets .....	0	0
12.6 Net gains or (losses) on cash, cash equivalents and short-term investments .....	8	(3)
12.7 Miscellaneous proceeds .....	0	398,249
12.8 Total investment proceeds (Lines 12.1 to 12.7) .....	6,770,892	7,066,760
13. Cost of investments acquired (long-term only):		
13.1 Bonds .....	6,726,598	7,862,277
13.2 Stocks .....	0	0
13.3 Mortgage loans .....	0	0
13.4 Real estate .....	0	0
13.5 Other invested assets .....	0	0
13.6 Miscellaneous applications .....	382,168	0
13.7 Total investments acquired (Lines 13.1 to 13.6) .....	7,108,766	7,862,277
14. Net increase (decrease) in contract loans and premium notes .....	0	0
15. Net cash from investments (Line 12.8 minus Line 13.7 minus Line 14) .....	(337,873)	(795,517)
<b>Cash from Financing and Miscellaneous Sources</b>		
16. Cash provided (applied):		
16.1 Surplus notes, capital notes .....	0	0
16.2 Capital and paid in surplus, less treasury stock .....	0	0
16.3 Borrowed funds .....	0	0
16.4 Net deposits on deposit-type contracts and other insurance liabilities .....	0	0
16.5 Dividends to stockholders .....	24,295	0
16.6 Other cash provided (applied) .....	(3,313,053)	3,556,983
17. Net cash from financing and miscellaneous sources (Lines 16.1 to 16.4 minus Line 16.5 plus Line 16.6) .....	(3,337,348)	3,556,983
<b>RECONCILIATION OF CASH, CASH EQUIVALENTS AND SHORT-TERM INVESTMENTS</b>		
18. Net change in cash, cash equivalents and short-term investments (Line 11, plus Lines 15 and 17) .....	320,978	(749,097)
19. Cash, cash equivalents and short-term investments:		
19.1 Beginning of year .....	3,326,238	4,075,335
19.2 End of period (Line 18 plus Line 19.1) .....	3,647,216	3,326,238

Note: Supplemental disclosures of cash flow information for non-cash transactions:

20.0001. Bonds sold in settlement of stockholder dividend .....	(2,956,271)	0
20.0002. Accrued interest on bonds sold in settlement of stockholder dividend .....	(19,434)	0
20.0003. Capital contribution settled with Other Invested Asset .....	0	45,646

Underwriting and Investment Exhibit - Part 1 - Premiums Earned

**N O N E**

Underwriting and Investment Exhibit - Part 1A - Recapitulation of all Premiums

**N O N E**

ANNUAL STATEMENT FOR THE YEAR 2020 OF THE NOVA CASUALTY COMPANY

**UNDERWRITING AND INVESTMENT EXHIBIT**

PART 1B - PREMIUMS WRITTEN

Line of Business	1 Direct Business (a)	Reinsurance Assumed		Reinsurance Ceded		6 Net Premiums Written Cols. 1+2+3-4-5
		2 From Affiliates	3 From Non-Affiliates	4 To Affiliates	5 To Non-Affiliates	
1. Fire	66,030	0	3,054	69,084	0	0
2. Allied lines	61,774	0	1,161	62,935	0	0
3. Farmowners multiple peril	0	0	0	0	0	0
4. Homeowners multiple peril	0	0	0	0	0	0
5. Commercial multiple peril	84,108,606	0	0	84,108,606	0	0
6. Mortgage guaranty	0	0	0	0	0	0
8. Ocean marine	0	0	0	0	0	0
9. Inland marine	19,605,308	0	0	19,605,308	0	0
10. Financial guaranty	0	0	0	0	0	0
11.1 Medical professional liability - occurrence	0	0	0	0	0	0
11.2 Medical professional liability - claims-made	0	0	0	0	0	0
12. Earthquake	81,340	0	0	81,340	0	0
13. Group accident and health	0	0	0	0	0	0
14. Credit accident and health (group and individual)	0	0	0	0	0	0
15. Other accident and health	0	0	0	0	0	0
16. Workers' compensation	51,864,703	0	543,086	52,407,789	0	0
17.1 Other liability - occurrence	61,958,649	0	0	61,958,649	0	0
17.2 Other liability - claims-made	4,700	0	0	4,700	0	0
17.3 Excess workers' compensation	0	0	0	0	0	0
18.1 Products liability - occurrence	0	0	0	0	0	0
18.2 Products liability - claims-made	0	0	0	0	0	0
19.1, 19.2 Private passenger auto liability	0	0	0	0	0	0
19.3, 19.4 Commercial auto liability	22,001,046	0	247,043	22,248,089	0	0
21. Auto physical damage	5,110,408	0	41,849	5,152,257	0	0
22. Aircraft (all perils)	0	0	0	0	0	0
23. Fidelity	1,125,752	0	0	1,125,752	0	0
24. Surety	6,578	0	0	6,578	0	0
26. Burglary and theft	473,237	0	0	473,237	0	0
27. Boiler and machinery	0	0	0	0	0	0
28. Credit	97,257	0	0	97,257	0	0
29. International	0	0	0	0	0	0
30. Warranty	0	0	0	0	0	0
31. Reinsurance - nonproportional assumed property	XXX	0	0	0	0	0
32. Reinsurance - nonproportional assumed liability	XXX	0	0	0	0	0
33. Reinsurance - nonproportional assumed financial lines	XXX	0	0	0	0	0
34. Aggregate write-ins for other lines of business	0	0	0	0	0	0
35. TOTALS	246,565,388	0	836,193	247,401,581	0	0
<b>DETAILS OF WRITE-INS</b>						
3401.						
3402.						
3403.						
3498. Summary of remaining write-ins for Line 34 from overflow page	0	0	0	0	0	0
3499. Totals (Lines 3401 thru 3403 plus 3498)(Line 34 above)	0	0	0	0	0	0

(a) Does the company's direct premiums written include premiums recorded on an installment basis? Yes [ ] No [ X ]

If yes: 1. The amount of such installment premiums \$ .....0

2. Amount at which such installment premiums would have been reported had they been reported on an annualized basis \$ .....0

ANNUAL STATEMENT FOR THE YEAR 2020 OF THE NOVA CASUALTY COMPANY

**UNDERWRITING AND INVESTMENT EXHIBIT**

PART 2 - LOSSES PAID AND INCURRED

Line of Business	Losses Paid Less Salvage				5 Net Losses Unpaid Current Year (Part 2A , Col. 8)	6 Net Losses Unpaid Prior Year	7 Losses Incurred Current Year (Cols. 4 + 5 - 6)	8 Percentage of Losses Incurred (Col. 7, Part 2) to Premiums Earned (Col. 4, Part 1)
	1 Direct Business	2 Reinsurance Assumed	3 Reinsurance Recovered	4 Net Payments (Cols. 1 + 2 -3 )				
1. Fire .....	30,199	1,779	31,978	0	0	0	0.0	
2. Allied lines .....	13,126	643	13,769	0	0	0	0.0	
3. Farmowners multiple peril .....	0	0	0	0	0	0	0.0	
4. Homeowners multiple peril .....	0	0	0	0	0	0	0.0	
5. Commercial multiple peril .....	27,872,246	35,159	27,907,405	0	0	0	0.0	
6. Mortgage guaranty .....	0	0	0	0	0	0	0.0	
8. Ocean marine .....	0	0	0	0	0	0	0.0	
9. Inland marine .....	11,325,889	0	11,325,889	0	0	0	0.0	
10. Financial guaranty .....	0	0	0	0	0	0	0.0	
11.1 Medical professional liability - occurrence .....	0	0	0	0	0	0	0.0	
11.2 Medical professional liability - claims-made .....	0	0	0	0	0	0	0.0	
12. Earthquake .....	0	0	0	0	0	0	0.0	
13. Group accident and health .....	0	0	0	0	0	0	0.0	
14. Credit accident and health (group and individual) .....	0	0	0	0	0	0	0.0	
15. Other accident and health .....	0	0	0	0	0	0	0.0	
16. Workers' compensation .....	23,855,788	463,298	24,319,086	0	0	0	0.0	
17.1 Other liability - occurrence .....	31,644,464	0	31,644,464	0	0	0	0.0	
17.2 Other liability - claims-made .....	964,612	0	964,612	0	0	0	0.0	
17.3 Excess workers' compensation .....	0	0	0	0	0	0	0.0	
18.1 Products liability - occurrence .....	0	0	0	0	0	0	0.0	
18.2 Products liability - claims-made .....	0	0	0	0	0	0	0.0	
19.1, 19.2 Private passenger auto liability .....	0	0	0	0	0	0	0.0	
19.3, 19.4 Commercial auto liability .....	13,140,479	249,651	13,390,130	0	0	0	0.0	
21. Auto physical damage .....	3,055,265	27,915	3,083,180	0	0	0	0.0	
22. Aircraft (all perils) .....	0	0	0	0	0	0	0.0	
23. Fidelity .....	0	0	0	0	0	0	0.0	
24. Surety .....	(16,739)	0	(16,739)	0	0	0	0.0	
26. Burglary and theft .....	0	0	0	0	0	0	0.0	
27. Boiler and machinery .....	0	0	0	0	0	0	0.0	
28. Credit .....	2,279,980	0	2,279,980	0	0	0	0.0	
29. International .....	0	0	0	0	0	0	0.0	
30. Warranty .....	0	0	0	0	0	0	0.0	
31. Reinsurance - nonproportional assumed property .....	XXX	0	0	0	0	0	0.0	
32. Reinsurance - nonproportional assumed liability .....	XXX	0	0	0	0	0	0.0	
33. Reinsurance - nonproportional assumed financial lines .....	XXX	0	0	0	0	0	0.0	
34. Aggregate write-ins for other lines of business .....	0	0	0	0	0	0	0.0	
35. TOTALS .....	114,165,309	778,445	114,943,754	0	0	0	0.0	
<b>DETAILS OF WRITE-INS</b>								
3401. ....								
3402. ....								
3403. ....								
3498. Summary of remaining write-ins for Line 34 from overflow page .....	0	0	0	0	0	0	0.0	
3499. Totals (Lines 3401 thru 3403 plus 3498)(Line 34 above) .....	0	0	0	0	0	0	0.0	

ANNUAL STATEMENT FOR THE YEAR 2020 OF THE NOVA CASUALTY COMPANY

**UNDERWRITING AND INVESTMENT EXHIBIT**

**PART 2A - UNPAID LOSSES AND LOSS ADJUSTMENT EXPENSES**

Line of Business	Reported Losses				Incurred But Not Reported			8 Net Losses Unpaid (Cols. 4 + 5 + 6 - 7)	9 Net Unpaid Loss Adjustment Expenses
	1 Direct	2 Reinsurance Assumed	3 Deduct Reinsurance Recoverable	4 Net Losses Excl. Incurred But Not Reported (Cols. 1 + 2 - 3)	5 Direct	6 Reinsurance Assumed	7 Reinsurance Ceded		
1. Fire	32,612	170	32,782	0	830,602	56	830,658	0	0
2. Allied lines	7,258	292	7,550	0	750,127	200	750,327	0	0
3. Farmowners multiple peril	0	0	0	0	0	0	0	0	0
4. Homeowners multiple peril	0	0	0	0	0	0	0	0	0
5. Commercial multiple peril	53,691,992	12	53,692,004	0	57,795,826	2,503	57,798,329	0	0
6. Mortgage guaranty	0	0	0	0	0	0	0	0	0
8. Ocean marine	0	0	0	0	0	0	0	0	0
9. Inland marine	1,610,292	0	1,610,292	0	732,872	0	732,872	0	0
10. Financial guaranty	0	0	0	0	0	0	0	0	0
11.1 Medical professional liability - occurrence	0	0	0	0	0	0	0	0	0
11.2 Medical professional liability - claims-made	0	0	0	0	0	0	0	0	0
12. Earthquake	0	0	0	0	286,107	0	286,107	0	0
13. Group accident and health	0	0	0	0	101,478	0	101,478	(a)	0
14. Credit accident and health (group and individual)	0	0	0	0	0	0	0	0	0
15. Other accident and health	0	0	0	0	0	0	0	(a)	0
16. Workers' compensation	36,203,562	1,116,709	37,320,271	0	60,297,265	851,533	61,148,798	0	0
17.1 Other liability - occurrence	27,941,427	0	27,941,427	0	42,626,671	0	42,626,671	0	0
17.2 Other liability - claims-made	583,247	0	583,247	0	243,921	0	243,921	0	0
17.3 Excess workers' compensation	127,382	0	127,382	0	49,792	0	49,792	0	0
18.1 Products liability - occurrence	0	0	0	0	0	0	0	0	0
18.2 Products liability - claims-made	0	0	0	0	0	0	0	0	0
19.1, 19.2 Private passenger auto liability	0	0	0	0	0	0	0	0	0
19.3, 19.4 Commercial auto liability	23,627,313	460,831	24,088,144	0	15,339,835	171,480	15,511,315	0	0
21. Auto physical damage	1,317,018	541	1,317,559	0	587,006	2,637	589,643	0	0
22. Aircraft (all perils)	0	0	0	0	0	0	0	0	0
23. Fidelity	35,010	0	35,010	0	838,561	0	838,561	0	0
24. Surety	25,000	0	25,000	0	190,401	0	190,401	0	0
26. Burglary and theft	0	0	0	0	267,127	0	267,127	0	0
27. Boiler and machinery	175,000	0	175,000	0	16,316	0	16,316	0	0
28. Credit	0	0	0	0	649,761	0	649,761	0	0
29. International	0	0	0	0	0	0	0	0	0
30. Warranty	0	0	0	0	0	0	0	0	0
31. Reinsurance - nonproportional assumed property	XXX	0	0	0	XXX	0	0	0	0
32. Reinsurance - nonproportional assumed liability	XXX	0	0	0	XXX	0	0	0	0
33. Reinsurance - nonproportional assumed financial lines	XXX	0	0	0	XXX	0	0	0	0
34. Aggregate write-ins for other lines of business	0	0	0	0	0	0	0	0	0
35. TOTALS	145,377,113	1,578,555	146,955,668	0	181,603,668	1,028,409	182,632,077	0	0
<b>DETAILS OF WRITE-INS</b>									
3401.									
3402.									
3403.									
3498. Summary of remaining write-ins for Line 34 from overflow page	0	0	0	0	0	0	0	0	0
3499. Totals (Lines 3401 thru 3403 plus 3498)(Line 34 above)	0	0	0	0	0	0	0	0	0

(a) Including \$ 0 for present value of life indemnity claims.

ANNUAL STATEMENT FOR THE YEAR 2020 OF THE NOVA CASUALTY COMPANY

**UNDERWRITING AND INVESTMENT EXHIBIT**

PART 3 - EXPENSES

	1	2	3	4
	Loss Adjustment Expenses	Other Underwriting Expenses	Investment Expenses	Total
1. Claim adjustment services:				
1.1 Direct .....	33,013,123	0	0	33,013,123
1.2 Reinsurance assumed .....	34,162	0	0	34,162
1.3 Reinsurance ceded .....	33,047,285	0	0	33,047,285
1.4 Net claim adjustment service (1.1 + 1.2 - 1.3) .....	0	0	0	0
2. Commission and brokerage:				
2.1 Direct excluding contingent .....	0	47,100,590	0	47,100,590
2.2 Reinsurance assumed, excluding contingent .....	0	164,853	0	164,853
2.3 Reinsurance ceded, excluding contingent .....	0	47,265,443	0	47,265,443
2.4 Contingent - direct .....	0	2,660,754	0	2,660,754
2.5 Contingent - reinsurance assumed .....	0	0	0	0
2.6 Contingent - reinsurance ceded .....	0	2,660,754	0	2,660,754
2.7 Policy and membership fees .....	0	0	0	0
2.8 Net commission and brokerage (2.1 + 2.2 - 2.3 + 2.4 + 2.5 - 2.6 + 2.7) .....	0	0	0	0
3. Allowances to managers and agents .....	0	0	0	0
4. Advertising .....	0	0	0	0
5. Boards, bureaus and associations .....	0	0	0	0
6. Surveys and underwriting reports .....	0	0	0	0
7. Audit of assureds' records .....	0	0	0	0
8. Salary and related items:				
8.1 Salaries .....	0	0	24,386	24,386
8.2 Payroll taxes .....	0	0	0	0
9. Employee relations and welfare .....	0	0	4,730	4,730
10. Insurance .....	0	0	0	0
11. Directors' fees .....	0	0	0	0
12. Travel and travel items .....	0	0	111	111
13. Rent and rent items .....	0	0	686	686
14. Equipment .....	0	0	4,269	4,269
15. Cost or depreciation of EDP equipment and software .....	0	0	0	0
16. Printing and stationery .....	0	0	49	49
17. Postage, telephone and telegraph, exchange and express .....	0	0	91	91
18. Legal and auditing .....	0	0	2,037	2,037
19. Totals (Lines 3 to 18) .....	0	0	36,359	36,359
20. Taxes, licenses and fees:				
20.1 State and local insurance taxes deducting guaranty association credits of \$ .....	0	0	0	0
20.2 Insurance department licenses and fees .....	0	0	0	0
20.3 Gross guaranty association assessments .....	0	0	0	0
20.4 All other (excluding federal and foreign income and real estate) .....	0	0	0	0
20.5 Total taxes, licenses and fees (20.1 + 20.2 + 20.3 + 20.4) .....	0	0	0	0
21. Real estate expenses .....	0	0	0	0
22. Real estate taxes .....	0	0	0	0
23. Reimbursements by uninsured plans .....	0	0	0	0
24. Aggregate write-ins for miscellaneous expenses .....	0	0	19,125	19,125
25. Total expenses incurred .....	0	0	55,484 (a)	55,484
26. Less unpaid expenses - current year .....	0	0	0	0
27. Add unpaid expenses - prior year .....	0	0	0	0
28. Amounts receivable relating to uninsured plans, prior year .....	0	0	0	0
29. Amounts receivable relating to uninsured plans, current year .....	0	0	0	0
30. TOTAL EXPENSES PAID (Lines 25 - 26 + 27 - 28 + 29) .....	0	0	55,484	55,484
<b>DETAILS OF WRITE-INS</b>				
2401. Custodial Fees .....	0	0	9,551	9,551
2402. Outside Data Processing .....	0	0	8,498	8,498
2403. Miscellaneous .....	0	0	1,076	1,076
2498. Summary of remaining write-ins for Line 24 from overflow page .....	0	0	0	0
2499. Totals (Lines 2401 thru 2403 plus 2498)(Line 24 above) .....	0	0	19,125	19,125

(a) Includes management fees of \$ 45,933 to affiliates and \$ 0 to non-affiliates.

ANNUAL STATEMENT FOR THE YEAR 2020 OF THE NOVA CASUALTY COMPANY

**EXHIBIT OF NET INVESTMENT INCOME**

	1 Collected During Year	2 Earned During Year
1. U.S. Government bonds	(a) 244,829	247,740
1.1 Bonds exempt from U.S. tax	(a) 567	397
1.2 Other bonds (unaffiliated)	(a) 977,648	936,955
1.3 Bonds of affiliates	(a) 0	0
2.1 Preferred stocks (unaffiliated)	(b) 0	0
2.11 Preferred stocks of affiliates	(b) 0	0
2.2 Common stocks (unaffiliated)	0	0
2.21 Common stocks of affiliates	0	0
3. Mortgage loans	(c) 0	0
4. Real estate	(d) 0	0
5. Contract loans	0	0
6. Cash, cash equivalents and short-term investments	(e) 1,559	1,562
7. Derivative instruments	(f) 0	0
8. Other invested assets	0	0
9. Aggregate write-ins for investment income	1,863	1,863
10. Total gross investment income	1,226,465	1,188,516
11. Investment expenses		(g) 55,484
12. Investment taxes, licenses and fees, excluding federal income taxes		(g) 0
13. Interest expense		(h) 0
14. Depreciation on real estate and other invested assets		(i) 0
15. Aggregate write-ins for deductions from investment income		0
16. Total deductions (Lines 11 through 15)		55,484
17. Net investment income (Line 10 minus Line 16)		1,133,032
<b>DETAILS OF WRITE-INS</b>		
0901. Miscellaneous Investment Income	1,863	1,863
0902.		
0903.		
0998. Summary of remaining write-ins for Line 9 from overflow page	0	0
0999. Totals (Lines 0901 thru 0903 plus 0998) (Line 9, above)	1,863	1,863
1501.		
1502.		
1503.		
1598. Summary of remaining write-ins for Line 15 from overflow page		0
1599. Totals (Lines 1501 thru 1503 plus 1598) (Line 15, above)		0

- (a) Includes \$ 32,167 accrual of discount less \$ 53,769 amortization of premium and less \$ 3,092 paid for accrued interest on purchases.
- (b) Includes \$ 0 accrual of discount less \$ 0 amortization of premium and less \$ 0 paid for accrued dividends on purchases.
- (c) Includes \$ 0 accrual of discount less \$ 0 amortization of premium and less \$ 0 paid for accrued interest on purchases.
- (d) Includes \$ 0 for company's occupancy of its own buildings; and excludes \$ 0 interest on encumbrances.
- (e) Includes \$ 929 accrual of discount less \$ 0 amortization of premium and less \$ 0 paid for accrued interest on purchases.
- (f) Includes \$ 0 accrual of discount less \$ 0 amortization of premium.
- (g) Includes \$ 0 investment expenses and \$ 0 investment taxes, licenses and fees, excluding federal income taxes, attributable to segregated and Separate Accounts.
- (h) Includes \$ 0 interest on surplus notes and \$ 0 interest on capital notes.
- (i) Includes \$ 0 depreciation on real estate and \$ 0 depreciation on other invested assets.

**EXHIBIT OF CAPITAL GAINS (LOSSES)**

	1	2	3	4	5
	Realized Gain (Loss) On Sales or Maturity	Other Realized Adjustments	Total Realized Capital Gain (Loss) (Columns 1 + 2)	Change in Unrealized Capital Gain (Loss)	Change in Unrealized Foreign Exchange Capital Gain (Loss)
1. U.S. Government bonds	101	0	101	0	0
1.1 Bonds exempt from U.S. tax	0	0	0	0	0
1.2 Other bonds (unaffiliated)	222,165	(15,571)	206,594	0	0
1.3 Bonds of affiliates	0	0	0	0	0
2.1 Preferred stocks (unaffiliated)	0	0	0	0	0
2.11 Preferred stocks of affiliates	0	0	0	0	0
2.2 Common stocks (unaffiliated)	0	0	0	0	0
2.21 Common stocks of affiliates	0	0	0	2,195,305	0
3. Mortgage loans	0	0	0	0	0
4. Real estate	0	0	0	0	0
5. Contract loans	0	0	0	0	0
6. Cash, cash equivalents and short-term investments	8	0	8	0	0
7. Derivative instruments	0	0	0	0	0
8. Other invested assets	0	0	0	45,673	0
9. Aggregate write-ins for capital gains (losses)	0	0	0	0	0
10. Total capital gains (losses)	222,274	(15,571)	206,703	2,240,978	0
<b>DETAILS OF WRITE-INS</b>					
0901.					
0902.					
0903.					
0998. Summary of remaining write-ins for Line 9 from overflow page	0	0	0	0	0
0999. Totals (Lines 0901 thru 0903 plus 0998) (Line 9, above)	0	0	0	0	0

ANNUAL STATEMENT FOR THE YEAR 2020 OF THE NOVA CASUALTY COMPANY

**EXHIBIT OF NON-ADMITTED ASSETS**

	1	2	3
	Current Year Total Nonadmitted Assets	Prior Year Total Nonadmitted Assets	Change in Total Nonadmitted Assets (Col. 2 - Col. 1)
1. Bonds (Schedule D) .....	0	0	0
2. Stocks (Schedule D):			
2.1 Preferred stocks .....	0	0	0
2.2 Common stocks .....	0	0	0
3. Mortgage loans on real estate (Schedule B):			
3.1 First liens .....	0	0	0
3.2 Other than first liens.....	0	0	0
4. Real estate (Schedule A):			
4.1 Properties occupied by the company .....	0	0	0
4.2 Properties held for the production of income.....	0	0	0
4.3 Properties held for sale .....	0	0	0
5. Cash (Schedule E - Part 1), cash equivalents (Schedule E - Part 2) and short-term investments (Schedule DA) .....	0	0	0
6. Contract loans .....	0	0	0
7. Derivatives (Schedule DB) .....	0	0	0
8. Other invested assets (Schedule BA) .....	91,319	45,646	(45,673)
9. Receivables for securities .....	0	0	0
10. Securities lending reinvested collateral assets (Schedule DL) .....	0	0	0
11. Aggregate write-ins for invested assets .....	0	0	0
12. Subtotals, cash and invested assets (Lines 1 to 11) .....	91,319	45,646	(45,673)
13. Title plants (for Title insurers only) .....	0	0	0
14. Investment income due and accrued .....	0	0	0
15. Premiums and considerations:			
15.1 Uncollected premiums and agents' balances in the course of collection .....	0	0	0
15.2 Deferred premiums, agents' balances and installments booked but deferred and not yet due .....	0	0	0
15.3 Accrued retrospective premiums and contracts subject to redetermination .....	0	0	0
16. Reinsurance:			
16.1 Amounts recoverable from reinsurers .....	0	0	0
16.2 Funds held by or deposited with reinsured companies .....	0	0	0
16.3 Other amounts receivable under reinsurance contracts .....	0	0	0
17. Amounts receivable relating to uninsured plans .....	0	0	0
18.1 Current federal and foreign income tax recoverable and interest thereon .....	0	0	0
18.2 Net deferred tax asset .....	0	0	0
19. Guaranty funds receivable or on deposit .....	0	0	0
20. Electronic data processing equipment and software .....	42,315	353,571	311,256
21. Furniture and equipment, including health care delivery assets .....	117,635	204,138	86,503
22. Net adjustment in assets and liabilities due to foreign exchange rates .....	0	0	0
23. Receivables from parent, subsidiaries and affiliates .....	0	0	0
24. Health care and other amounts receivable .....	0	0	0
25. Aggregate write-ins for other than invested assets .....	9,762,723	6,046,283	(3,716,440)
26. Total assets excluding Separate Accounts, Segregated Accounts and Protected Cell Accounts (Lines 12 to 25) .....	10,013,992	6,649,638	(3,364,354)
27. From Separate Accounts, Segregated Accounts and Protected Cell Accounts .....	0	0	0
28. Total (Lines 26 and 27)	10,013,992	6,649,638	(3,364,354)
<b>DETAILS OF WRITE-INS</b>			
1101. ....	0	0	0
1102. ....			
1103. ....			
1198. Summary of remaining write-ins for Line 11 from overflow page .....	0	0	0
1199. Totals (Lines 1101 thru 1103 plus 1198)(Line 11 above)	0	0	0
2501. Other Non-admitted Assets .....	9,762,723	6,046,283	(3,716,440)
2502. ....			
2503. ....			
2598. Summary of remaining write-ins for Line 25 from overflow page .....	0	0	0
2599. Totals (Lines 2501 thru 2503 plus 2598)(Line 25 above)	9,762,723	6,046,283	(3,716,440)

## NOTES TO FINANCIAL STATEMENTS

**NOTE 1 Summary of Significant Accounting Policies and Going Concern**
**A. Accounting Practices**

The financial statements of NOVA Casualty Company ("the Company") are presented on the basis of accounting practices prescribed or permitted by the New York Department of Financial Services.

The New York Department of Financial Services recognizes only statutory accounting practices prescribed or permitted by the State of New York for determining and reporting the financial condition and results of operations of an insurance company, for determining its solvency under the New York Insurance Law. The National Association of Insurance Commissioners ("NAIC") "Accounting Practices and Procedures Manual" ("NAIC SAP") has been adopted as a component of prescribed or permitted practices by the State of New York subject to any deviations prescribed or permitted by the New York Department of Financial Services.

A reconciliation of the Company's net income and capital and surplus between NAIC SAP and practices prescribed and permitted by the State of New York is shown below:

	SSAP #	F/S Page	F/S Line #	2020	2019
<b>NET INCOME</b>					
(1) State basis (Page 4, Line 20, Columns 1 & 2)	XXX	XXX	XXX	\$ 973,510	\$ 835,306
(2) State Prescribed Practices that are an increase/ (decrease) from NAIC SAP:				\$ -	\$ -
(3) State Permitted Practices that are an increase/(decrease) from NAIC SAP:				\$ -	\$ -
(4) NAIC SAP (1-2-3=4)	XXX	XXX	XXX	<u>\$ 973,510</u>	<u>\$ 835,306</u>
<b>SURPLUS</b>					
(5) State basis (Page 3, Line 37, Columns 1 & 2)	XXX	XXX	XXX	\$ 95,294,771	\$ 97,689,939
(6) State Prescribed Practices that are an increase/(decrease) from NAIC SAP:				\$ -	\$ -
(7) State Permitted Practices that are an increase/(decrease) from NAIC SAP:				\$ -	\$ -
(8) NAIC SAP (5-6-7=8)	XXX	XXX	XXX	<u>\$ 95,294,771</u>	<u>\$ 97,689,939</u>

**B. Use of Estimates in the Preparation of the Financial Statements**

The preparation of financial statements in conformity with Statutory Accounting Principles requires management to make estimates and assumptions that affect the reported amounts of assets and liabilities. It also requires disclosure of contingent assets and liabilities at the date of the financial statements and the reported amounts of revenue and expenses during the period. Actual results could differ from those estimates.

**C. Accounting Policy**

- (1) Short-term investments are stated at amortized cost.
- (2) Bonds not backed by loans are stated at either amortized cost or fair value, using the scientific interest method, in accordance with the NAIC Purposes and Procedures of the Securities Valuation Office.
- (3) Investments in affiliated common stock are carried using the equity method. The Company does not own any unaffiliated common stock.
- (4) The Company does not own any preferred stocks.
- (5) The Company does not own any mortgage loans.
- (6) Loan-backed securities are stated at either amortized cost or fair value, in accordance with the NAIC Purposes and Procedures of the Securities Valuation Office.
- (7) The Company owns 100% of the common stock of AIX Specialty Insurance Company ("ASIC"), which is carried using the equity method.
- (8) Other invested assets are recorded using the Equity method in accordance with the Statement of Statutory Accounting Principles ("SSAP") 48, "Joint Ventures, Partnerships and Limited Liability Companies."
- (9) The Company does not own any derivatives.
- (10) The Company does utilize anticipated investment income as a factor in the premium deficiency calculation.
- (11) Unpaid losses and loss adjustment expenses include an amount determined from individual case estimates and loss reports and an amount, based on past experience, for losses incurred but not reported ("IBNR"). Such liabilities are necessarily based on assumptions and estimates and while management believes the amount is adequate, the ultimate liability may be in excess of or less than the amount provided. The methods for making such estimates and for establishing the resulting liabilities are continually reviewed and any adjustments are reflected in the period determined.
- (12) The Company has not modified its capitalization policy from the prior year.
- (13) The Company does not write major medical insurance with prescription drug coverage.

**D. Going Concern**

Not applicable

**NOTE 2 Accounting Changes and Corrections of Errors**

Not applicable

**NOTE 3 Business Combinations and Goodwill**

Not applicable

**NOTE 4 Discontinued Operations**

Not applicable

**NOTES TO FINANCIAL STATEMENTS**

**NOTE 5 Investments**

**A. Mortgage Loans, including Mezzanine Real Estate Loans**

The Company does not own any mortgage loans.

**B. Debt Restructuring**

The Company did not have any restructured debt.

**C. Reverse Mortgages**

The Company does not own any reverse mortgages.

**D. Loan-Backed Securities**

(1) Prepayment assumptions for loan-backed and structured securities were obtained from prepayment models that are sensitive to refinancing, turnover, equity take-out and other relevant factors. These assumptions are consistent with the current interest rate and economic environment.

(2) Not applicable

(3) The Company had no securities with a recognized other-than-temporary impairment.

(4) All impaired securities (fair value is less than cost or amortized cost) for which an other-than-temporary impairment has not been recognized in earnings as a realized loss (including securities with a recognized other-than-temporary impairment for non-interest related declines when a non-recognized interest related impairment remains):

a) The aggregate amount of unrealized losses:

1. Less than 12 Months	\$	1,292
2. 12 Months or Longer	\$	-

b) The aggregate related fair value of securities with unrealized losses:

1. Less than 12 Months	\$	206,177
2. 12 Months or Longer	\$	-

(5) The Company employs a systematic methodology to determine if a decline in market value below book/adjusted carrying value is other-than-temporary. In determining whether a decline in fair value below book/adjusted carrying value is other-than-temporary, the Company evaluates several factors and circumstances, including the issuer's overall financial condition; the issuer's credit and financial strength ratings; the issuer's financial performance, including earnings trends, dividend payments, and asset quality; any specific events which may influence the operations of the issuer including governmental actions; a weakening of the general market conditions in the industry or geographic region in which the issuer operates; the length of time and degree to which the fair value of an issuer's securities remains below cost; the Company's intent and ability to hold the security until such time to allow for the expected recovery in value; and with respect to fixed maturity investments, any factors that might raise doubt about the issuer's ability to pay all amounts due according to the contractual terms. These factors are applied to all securities.

**E., F., G., H., I., J., K.**

Not applicable

**L. Restricted Assets**

**1. Restricted Assets (Including Pledged)**

No change

Restricted Asset Category	Gross (Admitted & Nonadmitted) Restricted						
	Current Year					6	7
	1	2	3	4	5		
Total General Account (G/A)	G/A Supporting Protected Cell Account Activity (a)	Total Protected Cell Account Restricted Assets	Protected Cell Account Assets Supporting G/A Activity (b)	Total (1 plus 3)	Total From Prior Year	Increase/ (Decrease) (5 minus 6)	
a. Subject to contractual obligation for which liability is not shown	\$ -	\$ -	\$ -	\$ -	\$ -	\$ -	\$ -
b. Collateral held under security lending agreements	\$ -	\$ -	\$ -	\$ -	\$ -	\$ -	\$ -
c. Subject to repurchase agreements	\$ -	\$ -	\$ -	\$ -	\$ -	\$ -	\$ -
d. Subject to reverse repurchase agreements	\$ -	\$ -	\$ -	\$ -	\$ -	\$ -	\$ -
e. Subject to dollar repurchase agreements	\$ -	\$ -	\$ -	\$ -	\$ -	\$ -	\$ -
f. Subject to dollar reverse repurchase agreements	\$ -	\$ -	\$ -	\$ -	\$ -	\$ -	\$ -
g. Placed under option contracts	\$ -	\$ -	\$ -	\$ -	\$ -	\$ -	\$ -
h. Letter stock or securities restricted as to sale - excluding FHLB capital stock	\$ -	\$ -	\$ -	\$ -	\$ -	\$ -	\$ -
i. FHLB capital stock	\$ -	\$ -	\$ -	\$ -	\$ -	\$ -	\$ -
j. On deposit with states	\$ 11,949,778	\$ -	\$ -	\$ -	\$ 11,949,778	\$ 11,870,936	\$ 78,842
k. On deposit with other regulatory bodies	\$ 500,176	\$ -	\$ -	\$ -	\$ 500,176	\$ 500,224	\$ (48)
l. Pledged collateral to FHLB (including assets backing funding agreements)	\$ -	\$ -	\$ -	\$ -	\$ -	\$ -	\$ -
m. Pledged as collateral not captured in other categories	\$ -	\$ -	\$ -	\$ -	\$ -	\$ -	\$ -
n. Other restricted assets	\$ 9,762,723	\$ -	\$ -	\$ -	\$ 9,762,723	\$ 6,046,285	\$ 3,716,438
<b>o. Total Restricted Assets</b>	<b>\$ 22,212,677</b>	<b>\$ -</b>	<b>\$ -</b>	<b>\$ -</b>	<b>\$ 22,212,677</b>	<b>\$ 18,417,445</b>	<b>\$ 3,795,232</b>

(a) Subset of Column 1

(b) Subset of Column 3

**NOTES TO FINANCIAL STATEMENTS**

Restricted Asset Category	Current Year			
	8  Total Non-admitted Restricted	9  Total Admitted Restricted (5 minus 8)	Percentage	
			10  Gross (Admitted & Non-admitted) Restricted to Total Assets (c)	11  Admitted Restricted to Total Admitted Assets (d)
a. Subject to contractual obligation for which liability is not shown	\$ -	\$ -	0.000%	0.000%
b. Collateral held under security lending agreements	\$ -	\$ -	0.000%	0.000%
c. Subject to repurchase agreements	\$ -	\$ -	0.000%	0.000%
d. Subject to reverse repurchase agreements	\$ -	\$ -	0.000%	0.000%
e. Subject to dollar repurchase agreements	\$ -	\$ -	0.000%	0.000%
f. Subject to dollar reverse repurchase agreements	\$ -	\$ -	0.000%	0.000%
g. Placed under option contracts	\$ -	\$ -	0.000%	0.000%
h. Letter stock or securities restricted as to sale - excluding FHLB capital stock	\$ -	\$ -	0.000%	0.000%
i. FHLB capital stock	\$ -	\$ -	0.000%	0.000%
j. On deposit with states	\$ -	\$ 11,949,778	10.971%	12.081%
k. On deposit with other regulatory bodies	\$ -	\$ 500,176	0.459%	0.506%
l. Pledged collateral to FHLB (including assets backing funding agreements)	\$ -	\$ -	0.000%	0.000%
m. Pledged as collateral not captured in other categories	\$ -	\$ -	0.000%	0.000%
n. Other restricted assets	\$ 9,762,723	\$ -	8.963%	0.000%
<b>o. Total Restricted Assets</b>	<b>\$ 9,762,723</b>	<b>\$ 12,449,954</b>	<b>20.393%</b>	<b>12.587%</b>

(c) Column 5 divided by Asset Page, Column 1, Line 28

(d) Column 9 divided by Asset Page, Column 3, Line 28

2. Detail of Assets Pledged as Collateral Not Captured in Other Categories (Contracts That Share Similar Characteristics, Such as Reinsurance and Derivatives, Are Reported in the Aggregate)

Not applicable

3. Detail of Other Restricted Assets (Contracts That Share Similar Characteristics, Such as Reinsurance and Derivatives, Are Reported in the Aggregate)

Description of Assets	Gross (Admitted & Nonadmitted) Restricted					8  Total Current Year Admitted Restricted	Percentage			
	Current Year						6  Total From Prior Year	7  Increase/ (Decrease) (5 minus 6)	9  Gross (Admitted & Nonadmitted) Restricted to Total Assets	10  Admitted Restricted to Total Admitted Assets
	1  Total General Account (G/A)	2  G/A Supporting Protected Cell Account Activity (a)	3  Total Protected Cell Account (S/A) Restricted Assets	4  Protected Cell Account Assets Supporting G/A Activity (b)	5  Total (1 plus 3)					
Thirty Party Administrator Cash	\$ 9,762,723	\$ -	\$ -	\$ -	\$ 9,762,723	\$ 6,046,285	\$ 3,716,438	\$ -	8.963%	0.000%
	\$ 9,762,723	\$ -	\$ -	\$ -	\$ 9,762,723	\$ 6,046,285	\$ 3,716,438	\$ -	8.963%	0.000%

(a) Subset of column 1

(b) Subset of column 3

(c) Total Line for Columns 1 through 7 should equal 5L(1)n Columns 1 through 7 respectively and Total Line for Columns 8 through 10 should equal 5L(1)n Columns 9 through 11 respectively.

4. Collateral Received and Reflected as Assets Within the Reporting Entity's Financial Statements

Not applicable

M., N., O., P.

Not applicable

- Q. Prepayment Penalty and Acceleration Fees

	General Account	Protected Cell
1. Number of CUSIPs	1	0
2. Aggregate Amount of Investment Income	\$10,138	\$0

**NOTE 6 Joint Ventures, Partnerships and Limited Liability Companies**

- A. The Company has no investment in joint ventures, partnerships or limited liability companies that exceed 10% of total admitted assets as of the end of the reporting period.

- B. Not applicable

**NOTE 7 Investment Income**

Not applicable

**NOTE 8 Derivative Instruments**

Not applicable

**NOTES TO FINANCIAL STATEMENTS**

**NOTE 9 Income Taxes**

A. The components of the net deferred tax asset/(liability) at the end of current period are as follows:

1.

	As of End of Current Period			12/31/2019			Change		
	(1) Ordinary	(2) Capital	(3) (Col. 1 + 2) Total	(4) Ordinary	(5) Capital	(6) (Col. 4 + 5) Total	(7) (Col. 1 - 4) Ordinary	(8) (Col. 2 - 5) Capital	(9) (Col. 7 + 8) Total
(a) Gross Deferred Tax Assets	\$ 2,060,710	\$ -	\$ 2,060,710	\$ 1,330,883	\$ -	\$ 1,330,883	\$ 729,827	\$ -	\$ 729,827
(b) Statutory Valuation Allowance Adjustment	\$ -	\$ -	\$ -	\$ -	\$ -	\$ -	\$ -	\$ -	\$ -
(c) Adjusted Gross Deferred Tax Assets (1a - 1b)	\$ 2,060,710	\$ -	\$ 2,060,710	\$ 1,330,883	\$ -	\$ 1,330,883	\$ 729,827	\$ -	\$ 729,827
(d) Deferred Tax Assets Nonadmitted	\$ -	\$ -	\$ -	\$ -	\$ -	\$ -	\$ -	\$ -	\$ -
(e) Subtotal Net Admitted Deferred Tax Asset (1c - 1d)	\$ 2,060,710	\$ -	\$ 2,060,710	\$ 1,330,883	\$ -	\$ 1,330,883	\$ 729,827	\$ -	\$ 729,827
(f) Deferred Tax Liabilities	\$ 8,886	\$ 60,220	\$ 69,106	\$ 74,250	\$ 19,727	\$ 93,977	\$ (65,364)	\$ 40,493	\$ (24,871)
(g) Net Admitted Deferred Tax Asset/(Net Deferred Tax Liability) (1e - 1f)	\$ 2,051,824	\$ (60,220)	\$ 1,991,604	\$ 1,256,633	\$ (19,727)	\$ 1,236,906	\$ 795,191	\$ (40,493)	\$ 754,698

2.

	As of End of Current Period			12/31/2019			Change		
	(1) Ordinary	(2) Capital	(3) (Col. 1 + 2) Total	(4) Ordinary	(5) Capital	(6) (Col. 4 + 5) Total	(7) (Col. 1 - 4) Ordinary	(8) (Col. 2 - 5) Capital	(9) (Col. 7 + 8) Total
Admission Calculation Components SSAP No. 101									
(a) Federal Income Taxes Paid In Prior Years Recoverable Through Loss Carrybacks	\$ 577,389	\$ -	\$ 577,389	\$ 596,635	\$ -	\$ 596,635	\$ (19,246)	\$ -	\$ (19,246)
(b) Adjusted Gross Deferred Tax Assets Expected To Be Realized (Excluding The Amount Of Deferred Tax Assets From 2(a) above) After Application of the Threshold Limitation. (The Lesser of 2(b)1 and 2(b)2 Below)	\$ 1,483,321	\$ -	\$ 1,483,321	\$ 734,248	\$ -	\$ 734,248	\$ 749,073	\$ -	\$ 749,073
1. Adjusted Gross Deferred Tax Assets Expected to be Realized Following the Balance Sheet Date.	\$ 1,483,321	\$ -	\$ 1,483,321	\$ 734,248	\$ -	\$ 734,248	\$ 749,073	\$ -	\$ 749,073
2. Adjusted Gross Deferred Tax Assets Allowed per Limitation Threshold.	XXX	XXX	\$13,992,248	XXX	XXX	\$14,641,513	XXX	XXX	\$ (649,265)
(c) Adjusted Gross Deferred Tax Assets (Excluding The Amount Of Deferred Tax Assets From 2(a) and 2(b) above) Offset by Gross Deferred Tax Liabilities.	\$ -	\$ -	\$ -	\$ -	\$ -	\$ -	\$ -	\$ -	\$ -
(d) Deferred Tax Assets Admitted as the result of application of SSAP No. 101. Total (2(a) + 2(b) + 2(c))	\$ 2,060,710	\$ -	\$ 2,060,710	\$ 1,330,883	\$ -	\$ 1,330,883	\$ 729,827	\$ -	\$ 729,827

3.

a. Ratio Percentage Used To Determine Recovery Period And Threshold Limitation Amount.	2020	2019
	22208.000%	21564.000%
b. Amount Of Adjusted Capital And Surplus Used To Determine Recovery Period And Threshold Limitation In 2(b)2 Above.	\$93,303,167	\$96,453,033

4. Tax Planning Strategies

	As of End of Current Period		12/31/2019		Change	
	(1) Ordinary	(2) Capital	(3) Ordinary	(4) Capital	(5) (Col. 1 - 3) Ordinary	(6) (Col. 2 - 4) Capital
Impact of Tax Planning Strategies:						
(a) Determination of adjusted gross deferred tax assets and net admitted deferred tax assets, by tax character as a percentage.						
1. Adjusted Gross DTAs amount from Note 9A1(c)	\$ 2,060,710	\$ -	\$ 1,330,883	\$ -	\$ 729,827	\$ -
2. Percentage of adjusted gross DTAs by tax character attributable to the impact of tax planning strategies	0%	0%	0%	0%	0%	0%
3. Net Admitted Adjusted Gross DTAs amount from Note 9A1(e)	\$ 2,060,710	\$ -	\$ 1,330,883	\$ -	\$ 729,827	\$ -
4. Percentage of net admitted adjusted gross DTAs by tax character admitted because of the impact of tax planning strategies	0%	0%	0%	0%	0%	0%

b. Do the Company's tax-planning strategies include the use of reinsurance? Yes  No

B. The Company does not have any deferred tax liabilities that are not recognized for amounts described in Accounting Standards Codification 740, Income Tax.

## NOTES TO FINANCIAL STATEMENTS

C. Current income taxes incurred consist of the following major components:

	(1) As of End of Current Period	(2) 12/31/2019	(3) (Col. 1 - 2) Change
1. Current Income Tax			
(a) Federal	\$ 320,615	\$ 294,635	\$ 25,980
(b) Foreign	\$ -	\$ -	\$ -
(c) Subtotal	\$ 320,615	\$ 294,635	\$ 25,980
(d) Federal income tax on net capital gains	\$ 45,613	\$ (2,499)	\$ 48,112
(e) Utilization of capital loss carry-forwards	\$ -	\$ -	\$ -
(f) Other	\$ -	\$ -	\$ -
(g) Federal and foreign income taxes incurred	\$ 366,228	\$ 292,136	\$ 74,092
2. Deferred Tax Assets:			
(a) Ordinary:			
(1) Discounting of unpaid losses	\$ -	\$ -	\$ -
(2) Unearned premium reserve	\$ -	\$ -	\$ -
(3) Policyholder reserves	\$ -	\$ -	\$ -
(4) Investments	\$ -	\$ -	\$ -
(5) Deferred acquisition costs	\$ -	\$ -	\$ -
(6) Policyholder dividends accrual	\$ -	\$ -	\$ -
(7) Fixed Assets	\$ 4,465	\$ 61,164	\$ (56,699)
(8) Compensation and benefits accrual	\$ -	\$ -	\$ -
(9) Pension accrual	\$ -	\$ -	\$ -
(10) Receivables - nonadmitted	\$ -	\$ -	\$ -
(11) Net operating loss carry-forward	\$ -	\$ -	\$ -
(12) Tax credit carry-forward	\$ -	\$ -	\$ -
(13) Other (including items <5% of total ordinary tax assets)	\$ 2,056,245	\$ 1,269,719	\$ 786,526
(99) Subtotal	\$ 2,060,710	\$ 1,330,883	\$ 729,827
(b) Statutory valuation allowance adjustment	\$ -	\$ -	\$ -
(c) Nonadmitted	\$ -	\$ -	\$ -
(d) Admitted ordinary deferred tax assets (2a99 - 2b - 2c)	\$ 2,060,710	\$ 1,330,883	\$ 729,827
(e) Capital:			
(1) Investments	\$ -	\$ -	\$ -
(2) Net capital loss carry-forward	\$ -	\$ -	\$ -
(3) Real estate	\$ -	\$ -	\$ -
(4) Other (including items <5% of total ordinary tax assets)	\$ -	\$ -	\$ -
(99) Subtotal	\$ -	\$ -	\$ -
(f) Statutory valuation allowance adjustment	\$ -	\$ -	\$ -
(g) Nonadmitted	\$ -	\$ -	\$ -
(h) Admitted capital deferred tax assets (2e99 - 2f - 2g)	\$ -	\$ -	\$ -
(i) Admitted deferred tax assets (2d + 2h)	\$ 2,060,710	\$ 1,330,883	\$ 729,827
3. Deferred Tax Liabilities:			
(a) Ordinary:			
(1) Investments	\$ -	\$ -	\$ -
(2) Fixed Assets	\$ 8,886	\$ 74,250	\$ (65,364)
(3) Deferred and uncollected premium	\$ -	\$ -	\$ -
(4) Policyholder reserves	\$ -	\$ -	\$ -
(5) Other (including items <5% of total ordinary tax liabilities)	\$ -	\$ -	\$ -
(99) Subtotal	\$ 8,886	\$ 74,250	\$ (65,364)
(b) Capital:			
(1) Investments	\$ 60,220	\$ 19,727	\$ 40,493
(2) Real estate	\$ -	\$ -	\$ -
(3) Other (including items <5% of total capital tax liabilities)	\$ -	\$ -	\$ -
(99) Subtotal	\$ 60,220	\$ 19,727	\$ 40,493
(c) Deferred tax liabilities (3a99 + 3b99)	\$ 69,106	\$ 93,977	\$ (24,871)
4. Net deferred tax assets/liabilities (2i - 3c)	\$ 1,991,604	\$ 1,236,906	\$ 754,698

The change in net deferred income taxes is comprised of the following, exclusive of non-admitted assets:

	(1) As of End of Current Period	(2) 12/31/2019	(3) (Col. 1 - 2) Change
Adjusted gross deferred tax assets	\$ 2,060,710	\$ 1,330,883	\$ 729,827
Total deferred tax liabilities	\$ 69,106	\$ 93,977	\$ (24,871)
Net deferred tax assets (liabilities)	\$ 1,991,604	\$ 1,236,906	\$ 754,698
Tax effect of change in unrealized gains (losses)			\$ 9,591
Change in net deferred income tax			\$ 764,289

D. Reconciliation of Federal Income Tax Rate to Actual Effective Tax Rate

The significant items causing a difference between the statutory federal income tax rate and the Company's effective income tax rate are as follows:

	As of End of Current Period	
	Tax	Rate
Tax provision at statutory rate	\$ 281,344	21.0%
Non-admitted assets	\$ (696,923)	-52.0%
Tax exempt income deduction	\$ (63)	0.0%
Return to provision & other	\$ 17,581	1.3%
Total	\$ (398,061)	-29.7%

	As of End of Current Period	
	Tax	Rate
Federal income taxes incurred	\$ 320,615	24.0%
Realized capital gains tax	\$ 45,613	3.4%
Change in net deferred income taxes	\$ (764,289)	-57.1%
Total statutory income taxes	\$ (398,061)	-29.7%

## NOTES TO FINANCIAL STATEMENTS

### E. Operating Loss and Tax Credit Carryforwards

1. At the end of the current reporting period, the Company has no net operating loss carryforwards and no capital loss carryforwards.

2. The Company has the following federal income taxes which are available for recoupment in the event of future losses:

For the tax year 2019:	\$	280,556
For the tax year 2020:	\$	296,834

3. At the end of the current reporting period, the Company has no deposits under section 6603 of the Internal Revenue Service Code.

### F. Consolidated Federal Income Tax Return

1. The Company's Federal Income Tax Return is consolidated with the following affiliated companies:

440 Lincoln Street Holding Company LLC	Opus Investment Management, Inc.
AIX, Inc.	Professionals Direct, Inc.
AIX Insurance Services of California Inc	Professionals Direct Insurance Services, Inc.
AIX Specialty Insurance Company	The Hanover American Insurance Company
Allmerica Financial Alliance Insurance Company	The Hanover Atlantic Insurance Company Ltd.
Allmerica Financial Benefit Insurance Company	The Hanover Casualty Company
Allmerica Plus Insurance Agency Inc	The Hanover Insurance Company
Campania Holding Company Inc	The Hanover Insurance Group, Inc.
Campmed Casualty & Indemnity Company Inc	The Hanover National Insurance Company
Citizens Insurance Company of America	The Hanover New Jersey Insurance Company
Citizens Insurance Company of Illinois	VeraVest Investments, Inc.
Citizens Insurance Company of Ohio	Verlan Fire Insurance Company
Citizens Insurance Company of the Midwest	Verlan Holdings, Inc.
Educators Insurance Agency Inc.	
Hanover Specialty Insurance Brokers Inc	
Massachusetts Bay Insurance Company	

2. The Board of Directors has delegated to Company Management, the development and maintenance of appropriate Federal Income Tax allocation policies and procedures, which are subject to written agreement between the companies. The Federal Income tax for all subsidiaries in the consolidated return of The Hanover Insurance Group, Inc. ("THG") is calculated on a separate return basis. Any current tax liability is paid to THG. Tax benefits resulting from taxable operating losses or credits of THG's subsidiaries are reimbursed to the subsidiary when such losses or credits can be utilized on a consolidated

G. The Company has no federal or foreign income tax loss contingencies, for which it is reasonably possible that the total liability will significantly increase within 12 months of the reporting date.

### H. Repatriation Transition Tax (RTT)

Not applicable

### I. Alternative Minimum Tax (AMT) Credit

Not applicable

## NOTE 10 Information Concerning Parent, Subsidiaries, Affiliates and Other Related Parties

### A. Nature of Relationships

The Company is a wholly-owned subsidiary of The Hanover Insurance Company ("Hanover"). Hanover, in turn, is a wholly-owned subsidiary of Opus Investment Management, Inc. ("Opus") which, in turn, is a wholly-owned non-insurance subsidiary of THG, a public traded company incorporated in Delaware.

### B. Detail of Transactions Greater than 1/2% of Admitted Assets

The Company declared an ordinary dividend to Hanover on December 7, 2020 totaling \$3,000,000 which was settled with bonds at fair value of \$2,956,271, accrued interest of \$19,434 and \$24,295 of cash. There were net realized gains in the amount of \$200,908 as a result of this transaction.

### C. Transactions with related party who are not reported on Schedule Y

Not applicable

### D. Amounts Due to or from Related Parties

At the end of the current reporting period, the Company reported \$4,058 as amounts due to an affiliated company. These arrangements require that intercompany balances be settled within 30 days.

### E. Management, Service Contracts, Cost Sharing Arrangements

Companies affiliated with Hanover have entered into an intercompany Consolidated Service Agreement. Under the agreement, legal entities will be charged the cost of the service provided or expenses paid by the entity providing the service or paying the expense. In addition, these entities will be charged a portion of the costs associated with activities that are performed for the good of THG legal entities.

Investment related services are provided by Opus pursuant to an intercompany Advisory Agreement.

### F. Guarantees or Contingencies for Related Parties

Not applicable

### G. Nature of Relationships that Could Affect Operations

All outstanding shares of the Company are owned by Hanover.

## NOTES TO FINANCIAL STATEMENTS

H Amount Deducted for Investment in Upstream Company

Not applicable

I Detail of Investments in Affiliates Greater than 10% of Admitted Assets

The Company owns 100% of ASIC. The common stock investment is recorded at its statutory equity value of \$55,801,534. Summarized 2020 statutory information for ASIC is as follows:

Description	Amount
Admitted Assets	\$ 55,807,216
Liabilities	\$ 5,682
Policyholders' Surplus	\$ 55,801,534
Net Income	<u>\$ 1,194,060</u>

J., K., L., M., N., O.

Not applicable

**NOTE 11 Debt**

Not applicable

**NOTE 12 Retirement Plans, Deferred Compensation, Postemployment Benefits and Compensated Absences and Other Postretirement Benefit Plans**

The labor for the Company is provided and paid for by Hanover. As such, the Company is included in the benefit plans in force for Hanover. Charges for actual salary and benefit costs for services provided to the Company by Hanover employees are ceded 100% pursuant to the Company's Intercompany Reinsurance Agreement.

A., B., C., D., E., F., G., H., I.

Not applicable

**NOTE 13 Capital and Surplus, Dividend Restrictions and Quasi-Reorganizations**

A. Outstanding Shares

The Company has 14,000 shares of \$300 par value common stock authorized, issued and outstanding.

B. Dividend Rate of Preferred Stock

Not applicable

(C-F) Dividend Restrictions

Dividends on common stock are paid as declared by the Board of Directors of the Company. Under the insurance regulations of New York, the maximum amount of dividends which the Company may pay to shareholders is limited to its earned surplus. At December 31, 2020, the Company had earned surplus of \$8,177,680. Furthermore, the maximum amount of dividends which the Company may pay without prior approval of the New York Department is limited to the lesser of 10% of the most recent year-end policyholders' surplus or the net investment income. The Company declared a dividend to Hanover totaling \$3,000,000 on December 7, 2020. Accordingly, the maximum dividend that may be paid at January 1, 2021 without prior approval is \$404,490. Subsequent to December 7, 2021, the maximum dividend payable without prior approval is \$3,404,490.

(G-I)

Not applicable

J. Changes in Unassigned Funds

The portion of unassigned funds (surplus) represented or reduced by cumulative unrealized gains and losses is \$ 1,649,024

There are no taxes attributed to these unrealized gains.

(K-M)

Not applicable

**NOTE 14 Liabilities, Contingencies and Assessments**

A., B., C.

Not applicable

D. Claims related extra contractual obligations and bad faith losses stemming from lawsuits

Direct

(1) The company paid the following amounts in the reporting period to settle claims related extra contractual obligations or bad faith claims stemming from lawsuits

\$ 3,000,000  
0-25 Claims

(2) Number of claims where amounts were paid to settle claims related extra contractual obligations or bad faith claims resulting from lawsuits during the reporting period

Per Claim

(3) Indicate whether claim count information is disclosed per claim or per claimant

E., F.

Not applicable

## NOTES TO FINANCIAL STATEMENTS

### G. All Other Contingencies

The Company routinely engages in various legal proceedings in the normal course of business, including claims for punitive damages. In the opinion of management, none of such contingencies are expected to have a material effect on the Company's financial position, although it is possible that the results of operations in a particular quarter or annual period would be materially affected by an adverse development or unfavorable outcome.

### NOTE 15 Leases

The Company has no material lease obligations at this time.

### NOTE 16 Information About Financial Instruments With Off-Balance Sheet Risk and Financial Instruments With Concentrations of Credit Risk

Not applicable

### NOTE 17 Sale, Transfer and Servicing of Financial Assets and Extinguishments of Liabilities

#### A., B.

Not applicable

#### C. Wash Sales

The Company generally does not sell and reacquire securities within 30 days of the sale date. There were no wash sale transactions with a NAIC designation of 3 or below in the current year.

### NOTE 18 Gain or Loss to the Reporting Entity from Uninsured Plans and the Uninsured Portion of Partially Insured Plans

Not applicable

### NOTE 19 Direct Premium Written/Produced by Managing General Agents/Third Party Administrators

Not applicable

### NOTE 20 Fair Value Measurements

#### A.

##### (1) Fair Value Measurements at Reporting Date

- a. There were no assets carried at fair value at the end of the reporting period.
- b. There were no liabilities carried at fair value at the end of the reporting period.

##### (2) The Company does not have any Level 3 assets or liabilities measured at fair value at the end of the reporting period.

##### (3) The reporting entity's policy is to recognize transfers in and transfers out as of the actual date of the event or change in circumstances that caused the transfer.

##### (4) For fair value measurements categorized within Level 2 of the fair value hierarchy, fair values of bonds are obtained by a quoted market price if available, otherwise, fair values are estimated using independent pricing sources or internally developed pricing models using discounted cash flow analyses.

The Company utilizes a third party pricing service for the valuation of the majority of its fixed maturity securities and receives one quote per security. When quoted market prices in an active market are available, they are provided by the pricing service as the fair value and such values are classified as Level 1. Since fixed maturities other than U.S. Treasury securities generally do not trade on a daily basis, the pricing service prepares estimates of fair value for those securities using pricing applications based on a market approach. Inputs into the fair value pricing applications which are common to all asset classes include benchmark U.S. Treasury security yield curves, reported trades of identical or similar fixed maturity securities, broker/dealer quotes of identical or similar fixed maturity securities and structural characteristics of the security, such as maturity date, coupon, mandatory principal payment dates, frequency of interest and principal payments and optional principal redemption features. Inputs into the fair value applications that are unique by asset class include, but are not limited to:

- U.S. government – determination of direct versus indirect government support and whether any contingencies exist with respect to the timely payment of principal and interest.
- All other governments – estimates of appropriate market spread versus underlying related sovereign treasury curves dependent on liquidity and direct or contingent support.
- Corporate bonds, which are included in Industrial and miscellaneous bonds - overall credit quality, including assessments of the level and variability of: economic sensitivity; liquidity; corporate financial policies; management quality; regulatory environment; competitive position; ownership; restrictive covenants; and security or collateral.
- Municipal bonds, which are included in States, territories and possessions; Political subdivisions of states, territories and possessions; and Special revenue and special assessment obligations - overall credit quality, including assessments of the level and variability of: sources of payment such as income, sales or property taxes, levies or user fees; credit support such as insurance; state or local economic and political base; natural resource availability; and susceptibility to natural or man-made catastrophic events such as hurricanes, earthquakes or acts of terrorism.
- Residential mortgage-backed securities, U.S. agency pass-thrus and collateralized mortgage obligations ("CMOs") which are included in U.S. governments and Special revenue and special assessment obligations - estimates of prepayment speeds based upon: historical prepayment rate trends; underlying collateral interest rates; geographic concentration; vintage year; borrower credit quality characteristics; interest rate and yield curve forecasts; government or monetary authority support programs; tax policies; and delinquency/default trends.
- Residential mortgage-backed securities, non-agency CMOs, which are included in Industrial and miscellaneous bonds - estimates of prepayment speeds based upon: historical prepayment rate trends; underlying collateral interest rates; geographic concentration; vintage year; borrower credit quality characteristics; interest rate and yield curve forecasts; government or monetary authority support programs; tax policies; delinquency/default trends; and severity of loss upon default and length of time to recover proceeds following default.
- Commercial mortgage-backed securities, which are included in Industrial and miscellaneous bonds - overall credit quality, including assessments of the value and supply/demand characteristics of: collateral type such as office, retail, residential, lodging, or other; geographic concentration by region, state, metropolitan statistical area and locale; vintage year; historical collateral performance including defeasance, delinquency, default and special servicer trends; and capital structure support features.

**NOTES TO FINANCIAL STATEMENTS**

- Asset-backed securities, which are included in Industrial and miscellaneous bonds – overall credit quality, including assessments of the underlying collateral type such as credit card receivables, auto loan receivables and equipment lease receivables; geographic diversification; vintage year; historical collateral performance including delinquency, default and casualty trends; economic conditions influencing use rates and resale values; and contract structural support features.

Generally, all prices provided by the pricing service, except actively traded securities with quoted market prices, are reported as Level 2.

The Company holds privately placed corporate bonds and certain other bonds that do not have an active market and for which the pricing service cannot provide fair values. The Company determines fair values for these securities using either matrix pricing or broker quotes. The Company will use observable market data to the extent it is available, but is also required to use a certain amount of unobservable judgment due to the illiquid nature of the securities involved. Additionally, the Company may obtain nonbinding broker quotes which are reported as Level 3.

(5) Not applicable

B. Not applicable

C. Aggregate fair value for all financial instruments and the level within the fair value hierarchy in which the fair value measurements in their entirety fall.

Type of Financial Instrument	Aggregate Fair Value	Admitted Assets	(Level 1)	(Level 2)	(Level 3)	Net Asset Value (NAV)	Not Practicable (Carrying Value)
Bonds	\$ 39,794,968	\$ 37,207,452	\$ 10,539,999	\$ 29,254,969	\$ -	\$ -	\$ -
Cash and Short-Term Investments	\$ 3,647,216	\$ 3,647,216	\$ 3,647,216	\$ -	\$ -	\$ -	\$ -

D., E.

Not applicable

**NOTE 21 Other Items**

A. Unusual or Infrequent Items

The Company recorded COVID-19 inspired premium refunds as a reduction in direct written and direct earned premiums. The Company refunded \$212,856 to our eligible Commercial Lines customers in certain markets, providing financial relief during the pandemic.

B. Troubled Debt Restructuring: Debtors

Not applicable

C. Other Disclosures

The Company elected to use rounding to the nearest dollar in reporting amounts in the Statement, except as otherwise directed by instructions.

The Company reported \$0 for premiums receivable due from policyholders, agents and ceding insurers on Page 2 line 15. The Company has no accounts receivable for uninsured plans and amounts due from agents, controlled or controlling persons.

D. Business Interruption Insurance Recoveries

Not applicable

E. State Transferable and Non-transferable Tax Credits

Not applicable

F. Subprime Mortgage Related Risk Exposure

The Company has reviewed its investments in mortgage-backed securities and has determined that these investments are not subprime.

G. Insurance-Linked Securities (ILS) Contracts

Not applicable

H. The Amount That Could Be Realized on Life Insurance Where the Reporting Entity is Owner and Beneficiary or Has Otherwise Obtained Rights to Control the Policy

Not applicable

**NOTE 22 Events Subsequent**

Not applicable

**NOTE 23 Reinsurance**

A. Unsecured Reinsurance Recoverables

Individual Reinsurers Who Are Members of a Group

Group Code	FEIN	Reinsurer Name	Unsecured Amount
88	13-5129825	THE HANOVER INSURANCE COMPANY	\$ 592,275,000

B. Reinsurance Recoverable in Dispute

Not applicable

## NOTES TO FINANCIAL STATEMENTS

## C. Reinsurance Assumed and Ceded

(1) The following table summarizes ceded and assumed unearned premiums and the related commissions equity at the end of the current reporting period:

	Assumed Reinsurance		Ceded Reinsurance		Net	
	Premium Reserve	Commission Equity	Premium Reserve	Commission Equity	Premium Reserve	Commission Equity
a. Affiliates	\$ -	\$ -	\$ 138,693,661	\$ -	\$(138,693,661)	\$ -
b. All Other	\$ 397,352	\$ 78,278	\$ -	\$ -	\$ 397,352	\$ 78,278
c. Total	<u>\$ 397,352</u>	<u>\$ 78,278</u>	<u>\$ 138,693,661</u>	<u>\$ -</u>	<u>\$(138,296,309)</u>	<u>\$ 78,278</u>
d. Direct Unearned Premium Reserve						\$ 138,296,309

(2) Not applicable

(3) Not applicable

D., E., F., G., H., I., J., K.

Not applicable

**NOTE 24 Retrospectively Rated Contracts & Contracts Subject to Redetermination**

Not applicable

**NOTE 25 Change in Incurred Losses and Loss Adjustment Expenses**

Not applicable

**NOTE 26 Intercompany Pooling Arrangements**

Not applicable

**NOTE 27 Structured Settlements**

Not applicable

**NOTE 28 Health Care Receivables**

Not applicable

**NOTE 29 Participating Policies**

Not applicable

**NOTE 30 Premium Deficiency Reserves**

1. Liability carried for premium deficiency reserves	\$ -
2. Date of the most recent evaluation of this liability	12/31/2020
3. Was anticipated investment income utilized in the calculation?	Yes <input checked="" type="checkbox"/> No <input type="checkbox"/>

**NOTE 31 High Deductibles**

Not applicable

**NOTE 32 Discounting of Liabilities for Unpaid Losses or Unpaid Loss Adjustment Expenses**

Not applicable

**NOTE 33 Asbestos/Environmental Reserves**

Not applicable

**NOTE 34 Subscriber Savings Accounts**

Not applicable

**NOTE 35 Multiple Peril Crop Insurance**

Not applicable

**NOTE 36 Financial Guaranty Insurance**

Not applicable

**GENERAL INTERROGATORIES**

**PART 1 - COMMON INTERROGATORIES  
GENERAL**

- 1.1 Is the reporting entity a member of an Insurance Holding Company System consisting of two or more affiliated persons, one or more of which is an insurer? ..... Yes [ X ] No [ ]  
If yes, complete Schedule Y, Parts 1, 1A and 2
- 1.2 If yes, did the reporting entity register and file with its domiciliary State Insurance Commissioner, Director or Superintendent, or with such regulatory official of the state of domicile of the principal insurer in the Holding Company System, a registration statement providing disclosure substantially similar to the standards adopted by the National Association of Insurance Commissioners (NAIC) in its Model Insurance Holding Company System Regulatory Act and model regulations pertaining thereto, or is the reporting entity subject to standards and disclosure requirements substantially similar to those required by such Act and regulations? ..... Yes [ X ] No [ ] N/A [ ]
- 1.3 State Regulating? ..... New York
- 1.4 Is the reporting entity publicly traded or a member of a publicly traded group? ..... Yes [ X ] No [ ]
- 1.5 If the response to 1.4 is yes, provide the CIK (Central Index Key) code issued by the SEC for the entity/group. .... 0000944695
- 2.1 Has any change been made during the year of this statement in the charter, by-laws, articles of incorporation, or deed of settlement of the reporting entity? ..... Yes [ ] No [ X ]
- 2.2 If yes, date of change: .....
- 3.1 State as of what date the latest financial examination of the reporting entity was made or is being made. .... 12/31/2019
- 3.2 State the as of date that the latest financial examination report became available from either the state of domicile or the reporting entity. This date should be the date of the examined balance sheet and not the date the report was completed or released. .... 12/31/2014
- 3.3 State as of what date the latest financial examination report became available to other states or the public from either the state of domicile or the reporting entity. This is the release date or completion date of the examination report and not the date of the examination (balance sheet date). .... 06/30/2016
- 3.4 By what department or departments?  
New York Department of Financial Services .....
- 3.5 Have all financial statement adjustments within the latest financial examination report been accounted for in a subsequent financial statement filed with Departments? ..... Yes [ ] No [ ] N/A [ X ]
- 3.6 Have all of the recommendations within the latest financial examination report been complied with? ..... Yes [ X ] No [ ] N/A [ ]
- 4.1 During the period covered by this statement, did any agent, broker, sales representative, non-affiliated sales/service organization or any combination thereof under common control (other than salaried employees of the reporting entity), receive credit or commissions for or control a substantial part (more than 20 percent of any major line of business measured on direct premiums) of:  
4.11 sales of new business? ..... Yes [ ] No [ X ]  
4.12 renewals? ..... Yes [ ] No [ X ]
- 4.2 During the period covered by this statement, did any sales/service organization owned in whole or in part by the reporting entity or an affiliate, receive credit or commissions for or control a substantial part (more than 20 percent of any major line of business measured on direct premiums) of:  
4.21 sales of new business? ..... Yes [ ] No [ X ]  
4.22 renewals? ..... Yes [ ] No [ X ]
- 5.1 Has the reporting entity been a party to a merger or consolidation during the period covered by this statement? ..... Yes [ ] No [ X ]  
If yes, complete and file the merger history data file with the NAIC.
- 5.2 If yes, provide the name of the entity, NAIC Company Code, and state of domicile (use two letter state abbreviation) for any entity that has ceased to exist as a result of the merger or consolidation.

1 Name of Entity	2 NAIC Company Code	3 State of Domicile
.....	.....	.....

- 6.1 Has the reporting entity had any Certificates of Authority, licenses or registrations (including corporate registration, if applicable) suspended or revoked by any governmental entity during the reporting period? ..... Yes [ ] No [ X ]
- 6.2 If yes, give full information:  
.....
- 7.1 Does any foreign (non-United States) person or entity directly or indirectly control 10% or more of the reporting entity? ..... Yes [ ] No [ X ]
- 7.2 If yes,  
7.21 State the percentage of foreign control; ..... 0.0 %  
7.22 State the nationality(s) of the foreign person(s) or entity(s) or if the entity is a mutual or reciprocal, the nationality of its manager or attorney-in-fact; and identify the type of entity(s) (e.g., individual, corporation or government, manager or attorney in fact).

1 Nationality	2 Type of Entity
.....	.....

ANNUAL STATEMENT FOR THE YEAR 2020 OF THE NOVA CASUALTY COMPANY

**GENERAL INTERROGATORIES**

- 8.1 Is the company a subsidiary of a bank holding company regulated by the Federal Reserve Board? ..... Yes [ ] No [ X ]
- 8.2 If response to 8.1 is yes, please identify the name of the bank holding company.  
.....
- 8.3 Is the company affiliated with one or more banks, thrifts or securities firms? ..... Yes [ X ] No [ ]
- 8.4 If response to 8.3 is yes, please provide below the names and location (city and state of the main office) of any affiliates regulated by a federal regulatory services agency [i.e. the Federal Reserve Board (FRB), the Office of the Comptroller of the Currency (OCC), the Federal Deposit Insurance Corporation (FDIC) and the Securities Exchange Commission (SEC)] and identify the affiliate's primary federal regulator.

1 Affiliate Name	2 Location (City, State)	3 FRB	4 OCC	5 FDIC	6 SEC
Opus Investment Management .....	Worcester, MA .....				YES

9. What is the name and address of the independent certified public accountant or accounting firm retained to conduct the annual audit?  
PricewaterhouseCoopers, LLP, 101 Seaport Boulevard, Suite 500, Boston, MA 02210
- 10.1 Has the insurer been granted any exemptions to the prohibited non-audit services provided by the certified independent public accountant requirements as allowed in Section 7H of the Annual Financial Reporting Model Regulation (Model Audit Rule), or substantially similar state law or regulation? ..... Yes [ ] No [ X ]
- 10.2 If the response to 10.1 is yes, provide information related to this exemption:  
.....
- 10.3 Has the insurer been granted any exemptions related to the other requirements of the Annual Financial Reporting Model Regulation as allowed for in Section 18A of the Model Regulation, or substantially similar state law or regulation? ..... Yes [ ] No [ X ]
- 10.4 If the response to 10.3 is yes, provide information related to this exemption:  
.....
- 10.5 Has the reporting entity established an Audit Committee in compliance with the domiciliary state insurance laws? ..... Yes [ X ] No [ ] N/A [ ]
- 10.6 If the response to 10.5 is no or n/a, please explain  
.....
11. What is the name, address and affiliation (officer/employee of the reporting entity or actuary/consultant associated with an actuarial consulting firm) of the individual providing the statement of actuarial opinion/certification?  
Jonathan Blake, Vice President and Lead Reserving Actuary, FCAS, MAAA, 440 Lincoln Street, Worcester, MA 01653 .....
- 12.1 Does the reporting entity own any securities of a real estate holding company or otherwise hold real estate indirectly? ..... Yes [ ] No [ X ]
- 12.11 Name of real estate holding company .....
- 12.12 Number of parcels involved ..... 0
- 12.13 Total book/adjusted carrying value ..... \$ ..... 0.00
- 12.2 If, yes provide explanation:  
.....
- 13. FOR UNITED STATES BRANCHES OF ALIEN REPORTING ENTITIES ONLY:**
- 13.1 What changes have been made during the year in the United States manager or the United States trustees of the reporting entity?  
.....
- 13.2 Does this statement contain all business transacted for the reporting entity through its United States Branch on risks wherever located? ..... Yes [ ] No [ ]
- 13.3 Have there been any changes made to any of the trust indentures during the year? ..... Yes [ ] No [ ]
- 13.4 If answer to (13.3) is yes, has the domiciliary or entry state approved the changes? ..... Yes [ ] No [ ] N/A [ ]
- 14.1 Are the senior officers (principal executive officer, principal financial officer, principal accounting officer or controller, or persons performing similar functions) of the reporting entity subject to a code of ethics, which includes the following standards? ..... Yes [ X ] No [ ]
- a. Honest and ethical conduct, including the ethical handling of actual or apparent conflicts of interest between personal and professional relationships;
- b. Full, fair, accurate, timely and understandable disclosure in the periodic reports required to be filed by the reporting entity;
- c. Compliance with applicable governmental laws, rules and regulations;
- d. The prompt internal reporting of violations to an appropriate person or persons identified in the code; and
- e. Accountability for adherence to the code.
- 14.11 If the response to 14.1 is No, please explain:  
.....
- 14.2 Has the code of ethics for senior managers been amended? ..... Yes [ ] No [ X ]
- 14.21 If the response to 14.2 is yes, provide information related to amendment(s).  
.....
- 14.3 Have any provisions of the code of ethics been waived for any of the specified officers? ..... Yes [ ] No [ X ]
- 14.31 If the response to 14.3 is yes, provide the nature of any waiver(s).  
.....

ANNUAL STATEMENT FOR THE YEAR 2020 OF THE NOVA CASUALTY COMPANY  
**GENERAL INTERROGATORIES**

- 15.1 Is the reporting entity the beneficiary of a Letter of Credit that is unrelated to reinsurance where the issuing or confirming bank is not on the SVO Bank List? ..... Yes [ ] No [ X ]
- 15.2 If the response to 15.1 is yes, indicate the American Bankers Association (ABA) Routing Number and the name of the issuing or confirming bank of the Letter of Credit and describe the circumstances in which the Letter of Credit is triggered.

1 American Bankers Association (ABA) Routing Number	2 Issuing or Confirming Bank Name	3 Circumstances That Can Trigger the Letter of Credit	4 Amount
.....	.....	.....	0.00

**BOARD OF DIRECTORS**

16. Is the purchase or sale of all investments of the reporting entity passed upon either by the board of directors or a subordinate committee thereof? ..... Yes [ X ] No [ ]
17. Does the reporting entity keep a complete permanent record of the proceedings of its board of directors and all subordinate committees thereof? ..... Yes [ X ] No [ ]
18. Has the reporting entity an established procedure for disclosure to its board of directors or trustees of any material interest or affiliation on the part of any of its officers, directors, trustees or responsible employees that is in conflict with the official duties of such person? ..... Yes [ X ] No [ ]

**FINANCIAL**

19. Has this statement been prepared using a basis of accounting other than Statutory Accounting Principles (e.g., Generally Accepted Accounting Principles)? ..... Yes [ ] No [ X ]
- 20.1 Total amount loaned during the year (inclusive of Separate Accounts, exclusive of policy loans):
- |   |          |      |
|---|----------|------|
| 20.11 To directors or other officers.....               | \$ ..... | 0.00 |
| 20.12 To stockholders not officers.....                 | \$ ..... | 0.00 |
| 20.13 Trustees, supreme or grand (Fraternal Only) ..... | \$ ..... | 0.00 |
- 20.2 Total amount of loans outstanding at the end of year (inclusive of Separate Accounts, exclusive of policy loans):
- |   |          |      |
|---|----------|------|
| 20.21 To directors or other officers.....               | \$ ..... | 0.00 |
| 20.22 To stockholders not officers.....                 | \$ ..... | 0.00 |
| 20.23 Trustees, supreme or grand (Fraternal Only) ..... | \$ ..... | 0.00 |
- 21.1 Were any assets reported in this statement subject to a contractual obligation to transfer to another party without the liability for such obligation being reported in the statement? ..... Yes [ ] No [ X ]
- 21.2 If yes, state the amount thereof at December 31 of the current year:
- |                                 |          |      |
|---------------------------------|----------|------|
| 21.21 Rented from others.....   | \$ ..... | 0.00 |
| 21.22 Borrowed from others..... | \$ ..... | 0.00 |
| 21.23 Leased from others .....  | \$ ..... | 0.00 |
| 21.24 Other .....               | \$ ..... | 0.00 |
- 22.1 Does this statement include payments for assessments as described in the Annual Statement Instructions other than guaranty fund or guaranty association assessments? ..... Yes [ ] No [ X ]
- 22.2 If answer is yes:
- |   |          |      |
|---|----------|------|
| 22.21 Amount paid as losses or risk adjustment \$ ..... | 0.00     |      |
| 22.22 Amount paid as expenses .....                     | \$ ..... | 0.00 |
| 22.23 Other amounts paid .....                          | \$ ..... | 0.00 |
- 23.1 Does the reporting entity report any amounts due from parent, subsidiaries or affiliates on Page 2 of this statement? ..... Yes [ ] No [ X ]
- 23.2 If yes, indicate any amounts receivable from parent included in the Page 2 amount: ..... \$ .....

**INVESTMENT**

- 24.01 Were all the stocks, bonds and other securities owned December 31 of current year, over which the reporting entity has exclusive control, in the actual possession of the reporting entity on said date? (other than securities lending programs addressed in 24.03)..... Yes [ X ] No [ ]
- 24.02 If no, give full and complete information relating thereto  
 .....
- 24.03 For securities lending programs, provide a description of the program including value for collateral and amount of loaned securities, and whether collateral is carried on or off-balance sheet. (an alternative is to reference Note 17 where this information is also provided)  
 .....
- 24.04 For the reporting entity's securities lending program, report amount of collateral for conforming programs as outlined in the Risk-Based Capital Instructions. .... \$ .....
- 24.05 For the reporting entity's securities lending program, report amount of collateral for other programs. .... \$ .....
- 24.06 Does your securities lending program require 102% (domestic securities) and 105% (foreign securities) from the counterparty at the outset of the contract? ..... Yes [ ] No [ ] N/A [ X ]
- 24.07 Does the reporting entity non-admit when the collateral received from the counterparty falls below 100%? ..... Yes [ ] No [ ] N/A [ X ]
- 24.08 Does the reporting entity or the reporting entity 's securities lending agent utilize the Master Securities lending Agreement (MSLA) to conduct securities lending? ..... Yes [ ] No [ ] N/A [ X ]

ANNUAL STATEMENT FOR THE YEAR 2020 OF THE NOVA CASUALTY COMPANY  
**GENERAL INTERROGATORIES**

24.09 For the reporting entity's securities lending program state the amount of the following as of December 31 of the current year:

24.091 Total fair value of reinvested collateral assets reported on Schedule DL, Parts 1 and 2 .....	\$ .....	0.00
24.092 Total book adjusted/carrying value of reinvested collateral assets reported on Schedule DL, Parts 1 and 2 .....	\$ .....	0.00
24.093 Total payable for securities lending reported on the liability page .....	\$ .....	0.00

25.1 Were any of the stocks, bonds or other assets of the reporting entity owned at December 31 of the current year not exclusively under the control of the reporting entity, or has the reporting entity sold or transferred any assets subject to a put option contract that is currently in force? (Exclude securities subject to Interrogatory 21.1 and 24.03)..... Yes [  ] No [  ]

25.2 If yes, state the amount thereof at December 31 of the current year:

25.21 Subject to repurchase agreements .....	\$ .....	0.00
25.22 Subject to reverse repurchase agreements .....	\$ .....	0.00
25.23 Subject to dollar repurchase agreements .....	\$ .....	0.00
25.24 Subject to reverse dollar repurchase agreements .....	\$ .....	0.00
25.25 Placed under option agreements .....	\$ .....	0.00
25.26 Letter stock or securities restricted as to sale - excluding FHLB Capital Stock .....	\$ .....	0.00
25.27 FHLB Capital Stock .....	\$ .....	0.00
25.28 On deposit with states .....	\$ .....	11,949,778.00
25.29 On deposit with other regulatory bodies .....	\$ .....	500,176.00
25.30 Pledged as collateral - excluding collateral pledged to an FHLB .....	\$ .....	0.00
25.31 Pledged as collateral to FHLB - including assets backing funding agreements .....	\$ .....	0.00
25.32 Other .....	\$ .....	0.00

25.3 For category (25.26) provide the following:

1 Nature of Restriction	2 Description	3 Amount
		0.00

26.1 Does the reporting entity have any hedging transactions reported on Schedule DB?..... Yes [  ] No [  ]

26.2 If yes, has a comprehensive description of the hedging program been made available to the domiciliary state? ..... Yes [  ] No [  ] N/A [  ]  
 If no, attach a description with this statement.

LINES 26.3 through 26.5: FOR LIFE/FRATERNAL REPORTING ENTITIES ONLY:

26.3 Does the reporting entity utilize derivatives to hedge variable annuity guarantees subject to fluctuations as a result of interest rate sensitivity? .. Yes [  ] No [  ]

26.4 If the response to 26.3 is YES, does the reporting entity utilize:

26.41 Special accounting provision of SSAP No. 108 .....	Yes [ <input type="checkbox"/> ] No [ <input type="checkbox"/> ]
26.42 Permitted accounting practice .....	Yes [ <input type="checkbox"/> ] No [ <input type="checkbox"/> ]
26.43 Other accounting guidance .....	Yes [ <input type="checkbox"/> ] No [ <input type="checkbox"/> ]

26.5 By responding YES to 26.41 regarding utilizing the special accounting provisions of SSAP No. 108, the reporting entity attests to the following:..... Yes [  ] No [  ]

- The reporting entity has obtained explicit approval from the domiciliary state.
- Hedging strategy subject to the special accounting provisions is consistent with the requirements of VM-21.
- Actuarial certification has been obtained which indicates that the hedging strategy is incorporated within the establishment of VM-21 reserves and provides the impact of the hedging strategy within the Actuarial Guideline Conditional Tail Expectation Amount.
- Financial Officer Certification has been obtained which indicates that the hedging strategy meets the definition of a Clearly Defined Hedging Strategy within VM-21 and that the Clearly Defined Hedging Strategy is the hedging strategy being used by the company in its actual day-to-day risk mitigation efforts.

27.1 Were any preferred stocks or bonds owned as of December 31 of the current year mandatorily convertible into equity, or, at the option of the issuer, convertible into equity?..... Yes [  ] No [  ]

27.2 If yes, state the amount thereof at December 31 of the current year. .... \$ .....

28. Excluding items in Schedule E - Part 3 - Special Deposits, real estate, mortgage loans and investments held physically in the reporting entity's offices, vaults or safety deposit boxes, were all stocks, bonds and other securities, owned throughout the current year held pursuant to a custodial agreement with a qualified bank or trust company in accordance with Section 1, III - General Examination Considerations, F. Outsourcing of Critical Functions, Custodial or Safekeeping Agreements of the NAIC Financial Condition Examiners Handbook?..... Yes [  ] No [  ]

28.01 For agreements that comply with the requirements of the NAIC Financial Condition Examiners Handbook, complete the following:

1 Name of Custodian(s)	2 Custodian's Address
Bank of New York Mellon .....	225 Liberty Street, New York, NY 10286 .....

ANNUAL STATEMENT FOR THE YEAR 2020 OF THE NOVA CASUALTY COMPANY

**GENERAL INTERROGATORIES**

28.02 For all agreements that do not comply with the requirements of the NAIC Financial Condition Examiners Handbook, provide the name, location and a complete explanation:

1 Name(s)	2 Location(s)	3 Complete Explanation(s)
.....	.....	.....

28.03 Have there been any changes, including name changes, in the custodian(s) identified in 28.01 during the current year?..... Yes [ ] No [ X ]

28.04 If yes, give full and complete information relating thereto:

1 Old Custodian	2 New Custodian	3 Date of Change	4 Reason
.....	.....	.....	.....

28.05 Investment management – Identify all investment advisors, investment managers, broker/dealers, including individuals that have the authority to make investment decisions on behalf of the reporting entity. For assets that are managed internally by employees of the reporting entity, note as such. ["...that have access to the investment accounts"; "...handle securities"]

1 Name of Firm or Individual	2 Affiliation
Opus Investment Management, Inc. ....	A.....

28.0597 For those firms/individuals listed in the table for Question 28.05, do any firms/individuals unaffiliated with the reporting entity (i.e. designated with a "U") manage more than 10% of the reporting entity's invested assets?..... Yes [ ] No [ ]

28.0598 For firms/individuals unaffiliated with the reporting entity (i.e. designated with a "U") listed in the table for Question 28.05, does the total assets under management aggregate to more than 50% of the reporting entity's invested assets?..... Yes [ ] No [ ]

28.06 For those firms or individuals listed in the table for 28.05 with an affiliation code of "A" (affiliated) or "U" (unaffiliated), provide the information for the table below.

1 Central Registration Depository Number	2 Name of Firm or Individual	3 Legal Entity Identifier (LEI)	4 Registered With	5 Investment Management Agreement (IMA) Filed
107569 .....	Opus Investment Management, Inc. ....	.....	Securities Exchange Commission .....	DS.....

29.1 Does the reporting entity have any diversified mutual funds reported in Schedule D, Part 2 (diversified according to the Securities and Exchange Commission (SEC) in the Investment Company Act of 1940 [Section 5(b)(1)])? ..... Yes [ ] No [ X ]

29.2 If yes, complete the following schedule:

1 CUSIP #	2 Name of Mutual Fund	3 Book/Adjusted Carrying Value
.....	.....	0.00
29.2999 - Total		0.00

29.3 For each mutual fund listed in the table above, complete the following schedule:

1 Name of Mutual Fund (from above table)	2 Name of Significant Holding of the Mutual Fund	3 Amount of Mutual Fund's Book/Adjusted Carrying Value Attributable to the Holding	4 Date of Valuation
.....	.....	0.00	.....

ANNUAL STATEMENT FOR THE YEAR 2020 OF THE NOVA CASUALTY COMPANY  
**GENERAL INTERROGATORIES**

30. Provide the following information for all short-term and long-term bonds and all preferred stocks. Do not substitute amortized value or statement value for fair value.

	1	2	3
	Statement (Admitted) Value	Fair Value	Excess of Statement over Fair Value (-), or Fair Value over Statement (+)
30.1 Bonds .....	37,207,452.00	39,794,968.00	2,587,516.00
30.2 Preferred stocks .....	0.00	0.00	0.00
30.3 Totals	37,207,452.00	39,794,968.00	2,587,516.00

30.4 Describe the sources or methods utilized in determining the fair values:

Fair values are obtained by a quoted market price if available, otherwise, fair values are estimated using independent pricing sources or internally developed pricing models using discounted cash flow analysis. ....

31.1 Was the rate used to calculate fair value determined by a broker or custodian for any of the securities in Schedule D? ..... Yes [ ] No [ X ]

31.2 If the answer to 31.1 is yes, does the reporting entity have a copy of the broker's or custodian's pricing policy (hard copy or electronic copy) for all brokers or custodians used as a pricing source? ..... Yes [ ] No [ ]

31.3 If the answer to 31.2 is no, describe the reporting entity's process for determining a reliable pricing source for purposes of disclosure of fair value for Schedule D:  
 .....

32.1 Have all the filing requirements of the Purposes and Procedures Manual of the NAIC Investment Analysis Office been followed? ..... Yes [ X ] No [ ]

32.2 If no, list exceptions:  
 .....

33. By self-designating 5GI securities, the reporting entity is certifying the following elements of each self-designated 5GI security:  
 a. Documentation necessary to permit a full credit analysis of the security does not exist or an NAIC CRP credit rating for an FE or PL security is not available.  
 b. Issuer or obligor is current on all contracted interest and principal payments.  
 c. The insurer has an actual expectation of ultimate payment of all contracted interest and principal.  
 Has the reporting entity self-designated 5GI securities? ..... Yes [ ] No [ X ]

34. By self-designating PLGI securities, the reporting entity is certifying the following elements of each self-designated PLGI security:  
 a. The security was purchased prior to January 1, 2018.  
 b. The reporting entity is holding capital commensurate with the NAIC Designation reported for the security.  
 c. The NAIC Designation was derived from the credit rating assigned by an NAIC CRP in its legal capacity as a NRSRO which is shown on a current private letter rating held by the insurer and available for examination by state insurance regulators.  
 d. The reporting entity is not permitted to share this credit rating of the PL security with the SVO.  
 Has the reporting entity self-designated PLGI securities? ..... Yes [ ] No [ X ]

35. By assigning FE to a Schedule BA non-registered private fund, the reporting entity is certifying the following elements of each self-designated FE fund:  
 a. The shares were purchased prior to January 1, 2019.  
 b. The reporting entity is holding capital commensurate with the NAIC Designation reported for the security.  
 c. The security had a public credit rating(s) with annual surveillance assigned by an NAIC CRP in its legal capacity as an NRSRO prior to January 1, 2019.  
 d. The fund only or predominantly holds bonds in its portfolio.  
 e. The current reported NAIC Designation was derived from the public credit rating(s) with annual surveillance assigned by an NAIC CRP in its legal capacity as an NRSRO.  
 f. The public credit rating(s) with annual surveillance assigned by an NAIC CRP has not lapsed.  
 Has the reporting entity assigned FE to Schedule BA non-registered private funds that complied with the above criteria? ..... Yes [ ] No [ X ]

36. By rolling/renewing short-term or cash equivalent investments with continued reporting on Schedule DA, Part 1 or Schedule E Part 2 (identified through a code (%) in those investment schedules), the reporting entity is certifying to the following:  
 a. The investment is a liquid asset that can be terminated by the reporting entity on the current maturity date.  
 b. If the investment is with a nonrelated party or nonaffiliate, then it reflects an arms-length transaction with renewal completed at the discretion of all involved parties.  
 c. If the investment is with a related party or affiliate, then the reporting entity has completed robust re-underwriting of the transaction for which documentation is available for regulator review.  
 d. Short-term and cash equivalent investments that have been renewed/rolled from the prior period that do not meet the criteria in 36.a - 36.c are reported as long-term investments.  
 Has the reporting entity rolled/renewed short-term or cash equivalent investments in accordance with these criteria? ..... Yes [ X ] No [ ] N/A [ ]

**GENERAL INTERROGATORIES**

**OTHER**

37.1 Amount of payments to trade associations, service organizations and statistical or rating bureaus, if any? .....\$ .....0.00

37.2 List the name of the organization and the amount paid if any such payment represented 25% or more of the total payments to trade associations, service organizations and statistical or rating bureaus during the period covered by this statement.

1 Name	2 Amount Paid
.....	0.00
.....	.....

38.1 Amount of payments for legal expenses, if any? .....\$ .....0.00

38.2 List the name of the firm and the amount paid if any such payment represented 25% or more of the total payments for legal expenses during the period covered by this statement.

1 Name	2 Amount Paid
.....	0.00
.....	.....

39.1 Amount of payments for expenditures in connection with matters before legislative bodies, officers or departments of government, if any? .....\$ .....0.00

39.2 List the name of the firm and the amount paid if any such payment represented 25% or more of the total payment expenditures in connection with matters before legislative bodies, officers or departments of government during the period covered by this statement.

1 Name	2 Amount Paid
.....	0.00
.....	.....

**GENERAL INTERROGATORIES**

**PART 2 - PROPERTY AND CASUALTY INTERROGATORIES**

1.1 Does the reporting entity have any direct Medicare Supplement Insurance in force? ..... Yes [ ] No [ X ]

1.2 If yes, indicate premium earned on U. S. business only. .... \$ 0.00

1.3 What portion of Item (1.2) is not reported on the Medicare Supplement Insurance Experience Exhibit? ..... \$ 0.00  
 1.31 Reason for excluding  
 .....

1.4 Indicate amount of earned premium attributable to Canadian and/or Other Alien not included in Item (1.2) above. .... \$ 0.00

1.5 Indicate total incurred claims on all Medicare Supplement Insurance. .... \$ 0.00

1.6 Individual policies:

	Most current three years:	
1.61 Total premium earned .....	\$ .....	0.00
1.62 Total incurred claims .....	\$ .....	0.00
1.63 Number of covered lives .....		0
All years prior to most current three years		
1.64 Total premium earned .....	\$ .....	0.00
1.65 Total incurred claims .....	\$ .....	0.00
1.66 Number of covered lives .....		0

1.7 Group policies:

	Most current three years:	
1.71 Total premium earned .....	\$ .....	0.00
1.72 Total incurred claims .....	\$ .....	0.00
1.73 Number of covered lives .....		0
All years prior to most current three years		
1.74 Total premium earned .....	\$ .....	0.00
1.75 Total incurred claims .....	\$ .....	0.00
1.76 Number of covered lives .....		0

2. Health Test:

	1 Current Year	2 Prior Year
2.1 Premium Numerator .....	0.00	0.00
2.2 Premium Denominator .....	0.00	0.00
2.3 Premium Ratio (2.1/2.2) .....	0.000	0.000
2.4 Reserve Numerator .....	0.00	0.00
2.5 Reserve Denominator .....	0.00	0.00
2.6 Reserve Ratio (2.4/2.5) .....	0.000	0.000

3.1 Did the reporting entity issue participating policies during the calendar year? ..... Yes [ ] No [ X ]

3.2 If yes, provide the amount of premium written for participating and/or non-participating policies during the calendar year:

3.21 Participating policies .....	\$ .....	0.00
3.22 Non-participating policies .....	\$ .....	0.00

4. For mutual reporting Entities and Reciprocal Exchanges Only:

4.1 Does the reporting entity issue assessable policies? ..... Yes [ ] No [ ]

4.2 Does the reporting entity issue non-assessable policies? ..... Yes [ ] No [ ]

4.3 If assessable policies are issued, what is the extent of the contingent liability of the policyholders? ..... % 0.0

4.4 Total amount of assessments paid or ordered to be paid during the year on deposit notes or contingent premiums. .... \$ 0.00

5. For Reciprocal Exchanges Only:

5.1 Does the Exchange appoint local agents? ..... Yes [ ] No [ ]

5.2 If yes, is the commission paid:

5.21 Out of Attorney's-in-fact compensation.....	Yes [ ]	No [ ]	N/A [ ]
5.22 As a direct expense of the exchange.....	Yes [ ]	No [ ]	N/A [ ]

5.3 What expenses of the Exchange are not paid out of the compensation of the Attorney-in-fact?  
 .....

5.4 Has any Attorney-in-fact compensation, contingent on fulfillment of certain conditions, been deferred? ..... Yes [ ] No [ ]

5.5 If yes, give full information  
 .....

**GENERAL INTERROGATORIES**

**PART 2 - PROPERTY AND CASUALTY INTERROGATORIES**

- 6.1 What provision has this reporting entity made to protect itself from an excessive loss in the event of a catastrophe under a workers' compensation contract issued without limit of loss?  
The Company cedes 100% of its business to The Hanover Insurance Company (Hanover). Hanover maintains workers' compensation coverage under its casualty excess of loss reinsurance agreement. ....
- 6.2 Describe the method used to estimate this reporting entity's probable maximum insurance loss, and identify the type of insured exposures comprising that probable maximum loss, the locations of concentrations of those exposures and the external resources (such as consulting firms or computer software models), if any, used in the estimation process.  
The Company uses multiple models including RMS v18.1 and AIR Touchstone v5 Catastrophe Modeling software packages to estimate the Company's probable maximum loss. These exposures are a combination of personal and commercial property risks. The major concentration of losses is in the Northeast. ....
- 6.3 What provision has this reporting entity made (such as a catastrophic reinsurance program) to protect itself from an excessive loss arising from the types and concentrations of insured exposures comprising its probable maximum property insurance loss?  
The Company purchases catastrophe reinsurance with an occurrence limit of \$900 million excess \$200 million with no co-participation. For occurrences from \$1.1 billion to \$1.3 billion, we have coverage for 33% of losses. Additionally, there is a program feature which provides coverage in excess of \$300 million in aggregate catastrophe losses. This feature provides \$75 million of coverage, subject to 24% co-participation, that may respond either to an event that exceeds \$1.1 billion or to events in excess of \$300 million in aggregate catastrophe losses. The catastrophe losses subject to the aggregate feature are limited only to those events that exceed \$7.5 million of incurred losses per event and have a per occurrence limit of \$200 million. ....
- 6.4 Does the reporting entity carry catastrophe reinsurance protection for at least one reinstatement, in an amount sufficient to cover its estimated probable maximum loss attributable to a single loss event or occurrence? ..... Yes [ ] No [ X ]
- 6.5 If no, describe any arrangements or mechanisms employed by the reporting entity to supplement its catastrophe reinsurance program or to hedge its exposure to unreinsured catastrophic loss.  
The Company cedes 100% of its business to Hanover. ....
- 7.1 Has this reporting entity reinsured any risk with any other entity under a quota share reinsurance contract that includes a provision that would limit the reinsurer's losses below the stated quota share percentage (e.g., a deductible, a loss ratio corridor, a loss ratio cap, an aggregate limit or any similar provisions)? ..... Yes [ ] No [ X ]
- 7.2 If yes, indicate the number of reinsurance contracts containing such provisions: ..... 0.00
- 7.3 If yes, does the amount of reinsurance credit taken reflect the reduction in quota share coverage caused by any applicable limiting provision(s)? ..... Yes [ ] No [ ]
- 8.1 Has this reporting entity reinsured any risk with any other entity and agreed to release such entity from liability, in whole or in part, from any loss that may occur on this risk, or portion thereof, reinsured? ..... Yes [ ] No [ X ]
- 8.2 If yes, give full information  
.....
- 9.1 Has the reporting entity ceded any risk under any reinsurance contract (or under multiple contracts with the same reinsurer or its affiliates) for which during the period covered by the statement: (i) it recorded a positive or negative underwriting result greater than 5% of prior year-end surplus as regards policyholders or it reported calendar year written premium ceded or year-end loss and loss expense reserves ceded greater than 5% of prior year-end surplus as regards policyholders; (ii) it accounted for that contract as reinsurance and not as a deposit; and (iii) the contract(s) contain one or more of the following features or other features that would have similar results:  
(a) A contract term longer than two years and the contract is noncancellable by the reporting entity during the contract term;  
(b) A limited or conditional cancellation provision under which cancellation triggers an obligation by the reporting entity, or an affiliate of the reporting entity, to enter into a new reinsurance contract with the reinsurer, or an affiliate of the reinsurer;  
(c) Aggregate stop loss reinsurance coverage;  
(d) A unilateral right by either party (or both parties) to commute the reinsurance contract, whether conditional or not, except for such provisions which are only triggered by a decline in the credit status of the other party;  
(e) A provision permitting reporting of losses, or payment of losses, less frequently than on a quarterly basis (unless there is no activity during the period); or  
(f) Payment schedule, accumulating retentions from multiple years or any features inherently designed to delay timing of the reimbursement to the ceding entity. .... Yes [ ] No [ X ]
- 9.2 Has the reporting entity during the period covered by the statement ceded any risk under any reinsurance contract (or under multiple contracts with the same reinsurer or its affiliates), for which, during the period covered by the statement, it recorded a positive or negative underwriting result greater than 5% of prior year-end surplus as regards policyholders or it reported calendar year written premium ceded or year-end loss and loss expense reserves ceded greater than 5% of prior year-end surplus as regards policyholders; excluding cessions to approved pooling arrangements or to captive insurance companies that are directly or indirectly controlling, controlled by, or under common control with (i) one or more unaffiliated policyholders of the reporting entity, or (ii) an association of which one or more unaffiliated policyholders of the reporting entity is a member where:  
(a) The written premium ceded to the reinsurer by the reporting entity or its affiliates represents fifty percent (50%) or more of the entire direct and assumed premium written by the reinsurer based on its most recently available financial statement; or  
(b) Twenty-five percent (25%) or more of the written premium ceded to the reinsurer has been retroceded back to the reporting entity or its affiliates in a separate reinsurance contract. .... Yes [ ] No [ X ]
- 9.3 If yes to 9.1 or 9.2, please provide the following information in the Reinsurance Summary Supplemental Filing for General Interrogatory 9:  
(a) The aggregate financial statement impact gross of all such ceded reinsurance contracts on the balance sheet and statement of income;  
(b) A summary of the reinsurance contract terms and indicate whether it applies to the contracts meeting the criteria in 9.1 or 9.2; and  
(c) A brief discussion of management's principle objectives in entering into the reinsurance contract including the economic purpose to be achieved.
- 9.4 Except for transactions meeting the requirements of paragraph 36 of SSAP No. 62R, Property and Casualty Reinsurance, has the reporting entity ceded any risk under any reinsurance contract (or multiple contracts with the same reinsurer or its affiliates) during the period covered by the financial statement, and either:  
(a) Accounted for that contract as reinsurance (either prospective or retroactive) under statutory accounting principles ("SAP") and as a deposit under generally accepted accounting principles ("GAAP"); or  
(b) Accounted for that contract as reinsurance under GAAP and as a deposit under SAP? ..... Yes [ ] No [ X ]
- 9.5 If yes to 9.4, explain in the Reinsurance Summary Supplemental Filing for General Interrogatory 9 (Section D) why the contract(s) is treated differently for GAAP and SAP.
- 9.6 The reporting entity is exempt from the Reinsurance Attestation Supplement under one or more of the following criteria:  
(a) The entity does not utilize reinsurance; or, ..... Yes [ ] No [ X ]  
(b) The entity only engages in a 100% quota share contract with an affiliate and the affiliated or lead company has filed an attestation supplement; or ..... Yes [ X ] No [ ]  
(c) The entity has no external cessions and only participates in an intercompany pool and the affiliated or lead company has filed an attestation supplement. .... Yes [ ] No [ X ]
10. If the reporting entity has assumed risks from another entity, there should be charged on account of such reinsurances a reserve equal to that which the original entity would have been required to charge had it retained the risks. Has this been done? ..... Yes [ X ] No [ ] N/A [ ]

**GENERAL INTERROGATORIES**

**PART 2 - PROPERTY AND CASUALTY INTERROGATORIES**

- 11.1 Has the reporting entity guaranteed policies issued by any other entity and now in force? ..... Yes [ ] No [ X ]
- 11.2 If yes, give full information  
.....
- 12.1 If the reporting entity recorded accrued retrospective premiums on insurance contracts on Line 15.3 of the asset schedule, Page 2, state the amount of corresponding liabilities recorded for:  
 12.11 Unpaid losses .....\$ .....0.00  
 12.12 Unpaid underwriting expenses (including loss adjustment expenses) .....\$ .....0.00
- 12.2 Of the amount on Line 15.3, Page 2, state the amount which is secured by letters of credit, collateral, and other funds .....\$ ..... 0.00
- 12.3 If the reporting entity underwrites commercial insurance risks, such as workers' compensation, are premium notes or promissory notes accepted from its insureds covering unpaid premiums and/or unpaid losses? ..... Yes [ ] No [ X ] N/A [ ]
- 12.4 If yes, provide the range of interest rates charged under such notes during the period covered by this statement:  
 12.41 From .....0.0 %  
 12.42 To .....0.0 %
- 12.5 Are letters of credit or collateral and other funds received from insureds being utilized by the reporting entity to secure premium notes or promissory notes taken by a reporting entity, or to secure any of the reporting entity's reported direct unpaid loss reserves, including unpaid losses under loss deductible features of commercial policies? ..... Yes [ ] No [ X ]
- 12.6 If yes, state the amount thereof at December 31 of the current year:  
 12.61 Letters of credit .....\$ .....0.00  
 12.62 Collateral and other funds .....\$ .....0.00
- 13.1 Largest net aggregate amount insured in any one risk (excluding workers' compensation): .....\$ ..... 0.00
- 13.2 Does any reinsurance contract considered in the calculation of this amount include an aggregate limit of recovery without also including a reinstatement provision? ..... Yes [ ] No [ X ]
- 13.3 State the number of reinsurance contracts (excluding individual facultative risk certificates, but including facultative programs, automatic facilities or facultative obligatory contracts) considered in the calculation of the amount. ....1
- 14.1 Is the company a cedant in a multiple cedant reinsurance contract? ..... Yes [ ] No [ X ]
- 14.2 If yes, please describe the method of allocating and recording reinsurance among the cedants:  
.....
- 14.3 If the answer to 14.1 is yes, are the methods described in item 14.2 entirely contained in the respective multiple cedant reinsurance contracts? ..... Yes [ ] No [ ]
- 14.4 If the answer to 14.3 is no, are all the methods described in 14.2 entirely contained in written agreements? ..... Yes [ ] No [ ]
- 14.5 If the answer to 14.4 is no, please explain:  
.....
- 15.1 Has the reporting entity guaranteed any financed premium accounts? ..... Yes [ ] No [ X ]
- 15.2 If yes, give full information  
.....
- 16.1 Does the reporting entity write any warranty business? ..... Yes [ ] No [ X ]  
 If yes, disclose the following information for each of the following types of warranty coverage:

	1 Direct Losses Incurred	2 Direct Losses Unpaid	3 Direct Written Premium	4 Direct Premium Unearned	5 Direct Premium Earned
16.11 Home .....	0.00	0.00	0.00	0.00	0.00
16.12 Products .....	0.00	0.00	0.00	0.00	0.00
16.13 Automobile .....	0.00	0.00	0.00	0.00	0.00
16.14 Other* .....	0.00	0.00	0.00	0.00	0.00

\* Disclose type of coverage:  
.....

**GENERAL INTERROGATORIES**

**PART 2 - PROPERTY AND CASUALTY INTERROGATORIES**

17.1 Does the reporting entity include amounts recoverable on unauthorized reinsurance in Schedule F - Part 3 that is exempt from the statutory provision for unauthorized reinsurance? ..... Yes [ ] No [ X ]

Incurred but not reported losses on contracts in force prior to July 1, 1984, and not subsequently renewed are exempt from the statutory provision for unauthorized reinsurance. Provide the following information for this exemption:

17.11 Gross amount of unauthorized reinsurance in Schedule F - Part 3 exempt from the statutory provision for unauthorized reinsurance .....	\$ .....	0.00
17.12 Unfunded portion of Interrogatory 17.11 .....	\$ .....	0.00
17.13 Paid losses and loss adjustment expenses portion of Interrogatory 17.11.....	\$ .....	0.00
17.14 Case reserves portion of Interrogatory 17.11 .....	\$ .....	0.00
17.15 Incurred but not reported portion of Interrogatory 17.11 .....	\$ .....	0.00
17.16 Unearned premium portion of Interrogatory 17.11 .....	\$ .....	0.00
17.17 Contingent commission portion of Interrogatory 17.11 .....	\$ .....	0.00

18.1 Do you act as a custodian for health savings accounts? ..... Yes [ ] No [ X ]

18.2 If yes, please provide the amount of custodial funds held as of the reporting date. .... \$ ..... 0.00

18.3 Do you act as an administrator for health savings accounts? ..... Yes [ ] No [ X ]

18.4 If yes, please provide the balance of funds administered as of the reporting date. .... \$ ..... 0.00

19. Is the reporting entity licensed or chartered, registered, qualified, eligible or writing business in at least two states? ..... Yes [ X ] No [ ]

19.1 If no, does the reporting entity assume reinsurance business that covers risks residing in at least one state other than the state of domicile of the reporting entity? ..... Yes [ ] No [ ]

ANNUAL STATEMENT FOR THE YEAR 2020 OF THE NOVA CASUALTY COMPANY

**FIVE-YEAR HISTORICAL DATA**

Show amounts in whole dollars only, no cents; show percentages to one decimal place, i.e. 17.6.

	1 2020	2 2019	3 2018	4 2017	5 2016
<b>Gross Premiums Written (Page 8, Part 1B Cols. 1, 2 &amp; 3)</b>					
1. Liability lines (Lines 11.1, 11.2, 16, 17.1, 17.2, 17.3, 18.1, 18.2, 19.1, 19.2 & 19.3, 19.4)	136,619,227.00	139,810,958.00	134,481,125.00	147,424,984.00	150,527,936.00
2. Property lines (Lines 1, 2, 9, 12, 21 & 26)	25,444,161.00	20,652,516.00	13,460,679.00	6,535,497.00	11,033,154.00
3. Property and liability combined lines (Lines 3, 4, 5, 8, 22 & 27)	84,108,606.00	87,450,381.00	89,652,520.00	78,711,419.00	56,128,289.00
4. All other lines (Lines 6, 10, 13, 14, 15, 23, 24, 28, 29, 30 & 34)	1,229,587.00	1,106,727.00	2,132,492.00	3,987,490.00	139,296.00
5. Nonproportional reinsurance lines (Lines 31, 32 & 33)	0.00	0.00	0.00	0.00	0.00
6. Total (Line 35)	247,401,581.00	249,020,582.00	239,726,816.00	236,659,390.00	217,828,675.00
<b>Net Premiums Written (Page 8, Part 1B, Col. 6)</b>					
7. Liability lines (Lines 11.1, 11.2, 16, 17.1, 17.2, 17.3, 18.1, 18.2, 19.1, 19.2 & 19.3, 19.4)	0.00	0.00	0.00	0.00	0.00
8. Property lines (Lines 1, 2, 9, 12, 21 & 26)	0.00	0.00	0.00	0.00	0.00
9. Property and liability combined lines (Lines 3, 4, 5, 8, 22 & 27)	0.00	0.00	0.00	0.00	0.00
10. All other lines (Lines 6, 10, 13, 14, 15, 23, 24, 28, 29, 30 & 34)	0.00	0.00	0.00	0.00	0.00
11. Nonproportional reinsurance lines (Lines 31, 32 & 33)	0.00	0.00	0.00	0.00	0.00
12. Total (Line 35)	0.00	0.00	0.00	0.00	0.00
<b>Statement of Income (Page 4)</b>					
13. Net underwriting gain (loss) (Line 8)	0.00	0.00	0.00	0.00	0.40
14. Net investment gain or (loss) (Line 11)	1,294,125.22	1,129,941.00	1,031,729.00	3,066,168.00	2,878,352.00
15. Total other income (Line 15)	0.00	0.00	0.00	(4,811.00)	(17,800.00)
16. Dividends to policyholders (Line 17)	0.00	0.00	0.00	0.00	0.00
17. Federal and foreign income taxes incurred (Line 19)	320,615.00	294,635.00	321,291.00	548,481.00	414,974.00
18. Net income (Line 20)	973,510.22	835,306.00	710,438.00	2,512,876.00	2,445,578.40
<b>Balance Sheet Lines (Pages 2 and 3)</b>					
19. Total admitted assets excluding protected cell business (Page 2, Line 26, Col. 3)	98,911,053.13	98,577,944.00	95,985,945.00	89,079,677.00	95,857,001.00
20. Premiums and considerations (Page 2, Col. 3)					
20.1 In course of collection (Line 15.1)	0.00	0.00	0.00	0.00	0.00
20.2 Deferred and not yet due (Line 15.2)	0.00	0.00	0.00	0.00	0.00
20.3 Accrued retrospective premiums (Line 15.3)	0.00	0.00	0.00	0.00	0.00
21. Total liabilities excluding protected cell business (Page 3, Line 26)	3,616,282.00	888,005.00	4,870,159.00	495,542.00	49,845.00
22. Losses (Page 3, Line 1)	0.00	0.00	0.00	0.00	0.00
23. Loss adjustment expenses (Page 3, Line 3)	0.00	0.00	0.00	0.00	0.00
24. Unearned premiums (Page 3, Line 9)	0.00	0.00	0.00	0.00	0.00
25. Capital paid up (Page 3, Lines 30 & 31)	4,200,000.00	4,200,000.00	4,200,000.00	4,200,000.00	4,200,000.00
26. Surplus as regards policyholders (Page 3, Line 37)	95,294,771.00	97,689,939.00	91,115,786.00	88,584,135.00	95,807,156.00
<b>Cash Flow (Page 5)</b>					
27. Net cash from operations (Line 11)	3,996,199.52	(3,510,563.00)	5,056,617.00	3,300,994.00	(1,271,598.00)
<b>Risk-Based Capital Analysis</b>					
28. Total adjusted capital	95,294,771.00	97,689,939.00	91,115,786.00	88,584,135.00	95,807,156.00
29. Authorized control level risk-based capital	420,133.00	447,294.00	546,170.00	478,975.00	486,239.00
<b>Percentage Distribution of Cash, Cash Equivalents and Invested Assets (Page 2, Col. 3) (Line divided by Page 2, Line 12, Col. 3) x100.0</b>					
30. Bonds (Line 1)	38.5	41.3	41.5	42.5	42.2
31. Stocks (Lines 2.1 & 2.2)	57.7	55.3	54.2	52.7	52.1
32. Mortgage loans on real estate (Lines 3.1 and 3.2)	0.0	0.0	0.0	0.0	0.0
33. Real estate (Lines 4.1, 4.2 & 4.3)	0.0	0.0	0.0	0.0	0.0
34. Cash, cash equivalents and short-term investments (Line 5)	3.8	3.4	4.3	4.4	5.7
35. Contract loans (Line 6)	0.0	0.0	0.0	0.0	0.0
36. Derivatives (Line 7)	0.0	0.0	0.0	0.0	0.0
37. Other invested assets (Line 8)	0.0	0.0	0.0	0.0	0.0
38. Receivables for securities (Line 9)	0.0	0.0	0.0	0.5	0.0
39. Securities lending reinvested collateral assets (Line 10)	0.0	0.0	0.0	0.0	0.0
40. Aggregate write-ins for invested assets (Line 11)	0.0	0.0	0.0	0.0	0.0
41. Cash, cash equivalents and invested assets (Line 12)	100.0	100.0	100.0	100.0	100.0
<b>Investments in Parent, Subsidiaries and Affiliates</b>					
42. Affiliated bonds (Schedule D, Summary, Line 12, Col. 1)	0.00	0.00	0.00	0.00	0.00
43. Affiliated preferred stocks (Schedule D, Summary, Line 18, Col. 1)	0.00	0.00	0.00	0.00	0.00
44. Affiliated common stocks (Schedule D, Summary, Line 24, Col. 1)	55,801,534.00	53,606,228.00	50,738,348.00	46,031,964.00	47,639,295.00
45. Affiliated short-term investments (subtotals included in Schedule DA Verification, Col. 5, Line 10)	0.00	0.00	0.00	0.00	0.00
46. Affiliated mortgage loans on real estate	0.00	0.00	0.00	0.00	0.00
47. All other affiliated	0.00	0.00	0.00	0.00	0.00
48. Total of above Lines 42 to 47	55,801,534.00	53,606,228.00	50,738,348.00	46,031,964.00	47,639,295.00
49. Total Investment in Parent included in Lines 42 to 47 above	0.00	0.00	0.00	0.00	0.00
50. Percentage of investments in parent, subsidiaries and affiliates to surplus as regards policyholders (Line 48 above divided by Page 3, Col. 1, Line 37 x 100.0)	58.6	54.9	55.7	52.0	49.7

ANNUAL STATEMENT FOR THE YEAR 2020 OF THE NOVA CASUALTY COMPANY

**FIVE-YEAR HISTORICAL DATA**

(Continued)

	1 2020	2 2019	3 2018	4 2017	5 2016
<b>Capital and Surplus Accounts (Page 4)</b>					
51. Net unrealized capital gains (losses) (Line 24) .....	2,231,387.00	2,867,880.00	4,706,384.00	(6,707,331.00)	44,803.00
52. Dividends to stockholders (Line 35) .....	(3,000,000.00)	0.00	(1,500,000.00)	(5,400,000.00)	0.00
53. Change in surplus as regards policyholders for the year (Line 38) .....	(2,395,167.78)	6,574,153.00	2,531,651.00	(7,223,021.00)	4,043,323.40
<b>Gross Losses Paid (Page 9, Part 2, Cols. 1 &amp; 2)</b>					
54. Liability lines (Lines 11.1, 11.2, 16, 17.1, 17.2, 17.3, 18.1, 18.2, 19.1, 19.2 & 19.3, 19.4) .....	70,318,292.00	77,370,223.00	68,560,426.00	67,102,303.00	61,096,254.00
55. Property lines (Lines 1, 2, 9, 12, 21 & 26) .....	14,454,816.00	11,766,011.00	4,355,574.00	4,591,601.00	10,971,622.00
56. Property and liability combined lines (Lines 3, 4, 5, 8, 22 & 27) .....	27,907,405.00	38,523,676.00	39,268,328.00	29,672,630.00	38,256,133.00
57. All other lines (Lines 6, 10, 13, 14, 15, 23, 24, 28, 29, 30 & 34) .....	2,263,241.00	2,114,028.00	2,492,229.00	1,801,499.00	(356,114.00)
58. Nonproportional reinsurance lines (Lines 31, 32 & 33) .....	0.00	0.00	0.00	0.00	0.00
59. Total (Line 35) .....	114,943,754.00	129,773,938.00	114,676,557.00	103,168,033.00	109,967,895.00
<b>Net Losses Paid (Page 9, Part 2, Col. 4)</b>					
60. Liability lines (Lines 11.1, 11.2, 16, 17.1, 17.2, 17.3, 18.1, 18.2, 19.1, 19.2 & 19.3, 19.4) .....	0.00	0.00	0.00	0.00	0.00
61. Property lines (Lines 1, 2, 9, 12, 21 & 26) .....	0.00	0.00	0.00	0.00	0.00
62. Property and liability combined lines (Lines 3, 4, 5, 8, 22 & 27) .....	0.00	0.00	0.00	0.00	0.00
63. All other lines (Lines 6, 10, 13, 14, 15, 23, 24, 28, 29, 30 & 34) .....	0.00	0.00	0.00	0.00	0.00
64. Nonproportional reinsurance lines (Lines 31, 32 & 33) .....	0.00	0.00	0.00	0.00	0.00
65. Total (Line 35) .....	0.00	0.00	0.00	0.00	0.00
<b>Operating Percentages (Page 4) (Line divided by Page 4, Line 1) x 100.0</b>					
66. Premiums earned (Line 1) .....	100.0	100.0	100.0	100.0	100.0
67. Losses incurred (Line 2) .....	0.0	0.0	0.0	0.0	0.0
68. Loss expenses incurred (Line 3) .....	0.0	0.0	0.0	0.0	0.0
69. Other underwriting expenses incurred (Line 4) .....	0.0	0.0	0.0	0.0	0.0
70. Net underwriting gain (loss) (Line 8) .....	0.0	0.0	0.0	0.0	0.0
<b>Other Percentages</b>					
71. Other underwriting expenses to net premiums written (Page 4, Lines 4 + 5 - 15 divided by Page 8, Part 1B, Col. 6, Line 35 x 100.0) .....	0.0	0.0	0.0	0.0	0.0
72. Losses and loss expenses incurred to premiums earned (Page 4, Lines 2 + 3 divided by Page 4, Line 1 x 100.0) .....	0.0	0.0	0.0	0.0	0.0
73. Net premiums written to policyholders' surplus (Page 8, Part 1B, Col. 6, Line 35 divided by Page 3, Line 37, Col. 1 x 100.0) .....	0.0	0.0	0.0	0.0	0.0
<b>One Year Loss Development (\$000 omitted)</b>					
74. Development in estimated losses and loss expenses incurred prior to current year (Schedule P - Part 2 - Summary, Line 12, Col. 11) .....	0.00000	0.00000	0.00000	0.00000	0.00000
75. Percent of development of losses and loss expenses incurred to policyholders' surplus of prior year end (Line 74 above divided by Page 4, Line 21, Col. 1 x 100.0) .....	0.0	0.0	0.0	0.0	0.0
<b>Two Year Loss Development (\$000 omitted)</b>					
76. Development in estimated losses and loss expenses incurred two years before the current year and prior year (Schedule P, Part 2 - Summary, Line 12, Col. 12) .....	0.00000	0.00000	0.00000	0.00000	0.00000
77. Percent of development of losses and loss expenses incurred to reported policyholders' surplus of second prior year end (Line 76 above divided by Page 4, Line 21, Col. 2 x 100.0) .....	0.0	0.0	0.0	0.0	0.0

NOTE: If a party to a merger, have the two most recent years of this exhibit been restated due to a merger in compliance with the disclosure requirements of SSAP No. 3, Accounting Changes and Correction of Errors? Yes [ ] No [ ]  
 If no, please explain: .....

ANNUAL STATEMENT FOR THE YEAR 2020 OF THE NOVA CASUALTY COMPANY  
**SCHEDULE P - ANALYSIS OF LOSSES AND LOSS EXPENSES**  
**SCHEDULE P - PART 1 - SUMMARY**

(\$000 OMITTED)

Years in Which Premiums Were Earned and Losses Were Incurred	Premiums Earned			Loss and Loss Expense Payments						10 Salvage and Subrogation Received	11 Total Net Paid Cols (4 - 5 + 6 - 7 + 8 - 9)	12 Number of Claims Reported Direct and Assumed
	1	2	3	Loss Payments		Defense and Cost Containment Payments		Adjusting and Other Payments				
				4	5	6	7	8	9			
1. Prior	XXX	XXX	XXX	4,947.08648	4,947.08648	590.37629	590.37629	0.00000	0.00000	0.00000	0.00000	XXX
2. 2011			0.00000			38,119.22176	38,119.22176	11,197.72952	11,197.72952	0.00000	0.00000	XXX
	209,704.7345 2	209,704.7345 2		144,100.6897 7	144,100.6897 7							
3. 2012			0.00000			46,995.89910	46,995.89910	11,421.66348	11,421.66348	0.00000	0.00000	XXX
	258,753.1992 1	258,753.1992 1		172,319.6348 4	172,319.6348 4							
4. 2013			0.00000			36,784.41193	36,784.41193	13,699.40026	13,699.40026	0.00000	0.00000	XXX
	265,464.0948 3	265,464.0948 3		153,974.6018 2	153,974.6018 2							
5. 2014			0.00000			29,935.58445	29,935.58445	12,334.72541	12,334.72541	0.00000	0.00000	XXX
	240,900.4759 0	240,900.4759 0		116,162.1059 6	116,162.1059 6							
6. 2015			0.00000			94,608.19266	94,608.19266	23,014.08925	23,014.08925	10,181.10544	10,181.10544	XXX
	232,974.5607 9	232,974.5607 9										
7. 2016			0.00000			73,920.03846	73,920.03846	20,807.84280	20,807.84280	11,568.91718	11,568.91718	XXX
	221,541.9453 4	221,541.9453 4										
8. 2017			0.00000			74,610.04106	74,610.04106	15,241.24502	15,241.24502	9,791.08665	9,791.08665	XXX
	223,091.0011 0	223,091.0011 0										
9. 2018			0.00000			70,613.81574	70,613.81574	12,368.12197	12,368.12197	6,953.31316	6,953.31316	XXX
	234,406.1574 5	234,406.1574 5										
10. 2019			0.00000			61,154.55791	61,154.55791	6,436.27240	6,436.27240	4,565.06589	4,565.06589	XXX
	242,187.2386 9	242,187.2386 9										
11. 2020			0.00000			51,307.53176	51,307.53176	1,461.68712	1,461.68712	2,650.39817	2,650.39817	XXX
	237,993.4196 0	237,993.4196 0										
12. Totals	XXX	XXX	XXX	1,017,718.29 646	1,017,718.29 646	231,754.7520 9	231,754.7520 9	94,363.40516	94,363.40516	0.00000	0.00000	XXX

	Losses Unpaid				Defense and Cost Containment Unpaid				Adjusting and Other Unpaid		23 Salvage and Subrogation Anticipated	24 Total Net Losses and Expenses Unpaid	25 Number of Claims Outstanding Direct and Assumed
	Case Basis		Bulk + IBNR		Case Basis		Bulk + IBNR		Adjusting and Other Unpaid				
	13	14	15	16	17	18	19	20	21	22			
1. Prior	4,934.14329	4,934.14329	7,572.36070	7,572.36070	1,006.18856	1,006.18856	550.40192	550.40192	0.00000	0.00000	0.00000	0.00000	XXX
2. 2011	1,517.22409	1,517.22409	3,202.73574	3,202.73574	214.73719	214.73719	411.79116	411.79116	0.00000	0.00000	0.00000	0.00000	XXX
3. 2012	1,890.41225	1,890.41225	3,480.65225	3,480.65225	415.37758	415.37758	662.81609	662.81609	216.51489	216.51489	0.00000	0.00000	XXX
4. 2013	4,513.95261	4,513.95261	4,882.30928	4,882.30928	931.65276	931.65276	1,415.76511	1,415.76511	144.14778	144.14778	0.00000	0.00000	XXX
5. 2014	5,078.43899	5,078.43899	5,022.72305	5,022.72305	726.73054	726.73054	2,153.08218	2,153.08218	167.16824	167.16824	0.00000	0.00000	XXX
6. 2015	8,006.43364	8,006.43364	7,257.99588	7,257.99588	1,606.70129	1,606.70129	2,932.37555	2,932.37555	257.93399	257.93399	0.00000	0.00000	XXX
7. 2016			9,946.21682	9,946.21682	2,751.35461	2,751.35461	4,122.26058	4,122.26058	425.19096	425.19096	0.00000	0.00000	XXX
	14,555.2112 4	14,555.2112 4											
8. 2017					4,320.41886	4,320.41886	7,044.94456	7,044.94456	630.83487	630.83487	0.00000	0.00000	XXX
	25,221.0707 9	25,221.0707 9	14,771.9501 0	14,771.9501 0									
9. 2018					6,149.37552	6,149.37552			1,301.48734	1,301.48734	0.00000	0.00000	XXX
	21,532.0472 4	21,532.0472 4	27,027.9643 2	27,027.9643 2			11,710.0051 9	11,710.0051 9					
10. 2019					6,295.88505	6,295.88505			2,044.62596	2,044.62596	0.00000	0.00000	XXX
	25,513.4572 1	25,513.4572 1	37,860.0804 2	37,860.0804 2			21,193.8068 7	21,193.8068 7					
11. 2020					2,860.02438	2,860.02438			8,761.76582	8,761.76582	0.00000	0.00000	XXX
	34,193.2764 6	34,193.2764 6	61,607.0882 3	61,607.0882 3			30,567.8532 9	30,567.8532 9					
12. Totals	146,955.667 81	146,955.667 81	182,632.076 79	182,632.076 79	27,278.4463 4	27,278.4463 4	82,765.1025 0	82,765.1025 0	13,949.6698 5	13,949.6698 5	0.00000	0.00000	XXX

**ANNUAL STATEMENT FOR THE YEAR 2020 OF THE NOVA CASUALTY COMPANY**

	Total Losses and Loss Expenses Incurred			Loss and Loss Expense Percentage (Incurred /Premiums Earned)			Nontabular Discount		34 Inter-Company Pooling Participation Percentage	Net Balance Sheet Reserves After Discount	
	26	27	28	29	30	31	32	33		35	36
	Direct and Assumed	Ceded	Net	Direct and Assumed	Ceded	Net	Loss	Loss Expense		Losses Unpaid	Loss Expenses Unpaid
1. Prior.....	XXX	XXX	XXX	XXX	XXX	XXX	0.00000	0.00000	XXX	0.00000	0.00000
2. 2011.....	198,764.12923	198,764.12923	0.00000	94.8	94.8	0.0	0.00000	0.00000	0.0	0.00000	0.00000
3. 2012.....	237,402.97048	237,402.97048	0.00000	91.7	91.7	0.0	0.00000	0.00000	0.0	0.00000	0.00000
4. 2013.....	216,346.24155	216,346.24155	0.00000	81.5	81.5	0.0	0.00000	0.00000	0.0	0.00000	0.00000
5. 2014.....	171,580.55882	171,580.55882	0.00000	71.2	71.2	0.0	0.00000	0.00000	0.0	0.00000	0.00000
6. 2015.....	147,864.82770	147,864.82770	0.00000	63.5	63.5	0.0	0.00000	0.00000	0.0	0.00000	0.00000
7. 2016.....	138,097.03265	138,097.03265	0.00000	62.3	62.3	0.0	0.00000	0.00000	0.0	0.00000	0.00000
8. 2017.....	151,631.59191	151,631.59191	0.00000	68.0	68.0	0.0	0.00000	0.00000	0.0	0.00000	0.00000
9. 2018.....	157,656.13048	157,656.13048	0.00000	67.3	67.3	0.0	0.00000	0.00000	0.0	0.00000	0.00000
10. 2019.....	165,063.75171	165,063.75171	0.00000	68.2	68.2	0.0	0.00000	0.00000	0.0	0.00000	0.00000
11. 2020.....	193,409.62523	193,409.62523	0.00000	81.3	81.3	0.0	0.00000	0.00000	0.0	0.00000	0.00000
12. Totals	XXX	XXX	XXX	XXX	XXX	XXX	0.00000	0.00000	XXX	0.00000	0.00000

Note: Parts 2 and 4 are gross of all discounting, including tabular discounting. Part 1 is gross of only nontabular discounting, which is reported in Columns 32 and 33 of Part 1. The tabular discount, if any, is reported in the Notes to Financial Statements which will reconcile Part 1 with Parts 2 and 4.

Schedule P - Part 2 - Summary

**N O N E**

Schedule P - Part 3 - Summary

**N O N E**

Schedule P - Part 4 - Summary

**N O N E**

ANNUAL STATEMENT FOR THE YEAR 2020 OF THE NOVA CASUALTY COMPANY

**SCHEDULE T - EXHIBIT OF PREMIUMS WRITTEN**

Allocated by States and Territories

States, Etc.	1 Active Status (a)	Gross Premiums, Including Policy and Membership Fees, Less Return Premiums and Premiums on Policies Not Taken		4 Dividends Paid or Credited to Policyholders on Direct Business	5 Direct Losses Paid (Deducting Salvage)	6 Direct Losses Incurred	7 Direct Losses Unpaid	8 Finance and Service Charges Not Included in Premiums	9 Direct Premiums Written for Federal Purchasing Groups (Included in Column 2)	
		2 Direct Premiums Written	3 Direct Premiums Earned							
1. Alabama	AL	L	2,308,287.00	2,037,728.00	0.00	1,668,350.00	367,856.00	1,858,039.00	0.00	0.00
2. Alaska	AK	L	328,613.00	439,763.00	0.00	46,517.00	230,365.00	504,421.00	0.00	0.00
3. Arizona	AZ	L	5,223,165.00	4,196,011.00	0.00	2,939,301.00	4,561,528.00	4,830,021.00	9,043.00	0.00
4. Arkansas	AR	L	1,773,107.00	1,613,344.00	0.00	1,427,926.00	1,219,115.00	1,157,420.00	0.00	0.00
5. California	CA	L	68,364,520.00	72,349,299.00	0.00	33,259,529.00	40,171,659.00	114,059,915.00	137,347.00	0.00
6. Colorado	CO	L	6,619,662.00	7,018,887.00	0.00	2,199,853.00	3,834,759.00	7,323,035.00	12,551.00	0.00
7. Connecticut	CT	L	3,199,272.00	3,066,769.00	0.00	1,823,943.00	1,818,412.00	4,355,708.00	0.00	0.00
8. Delaware	DE	L	962,683.00	612,375.00	0.00	196,463.00	326,725.00	485,005.00	0.00	0.00
9. District of Columbia	DC	L	471,133.00	475,086.00	0.00	88,278.00	118,037.00	555,317.00	0.00	0.00
10. Florida	FL	L	12,510,065.00	11,382,071.00	0.00	10,733,188.00	9,688,439.00	12,459,343.00	17,050.00	0.00
11. Georgia	GA	L	5,266,263.00	4,835,869.00	0.00	2,128,108.00	3,218,741.00	8,493,234.00	8,769.00	0.00
12. Hawaii	HI	L	658,643.00	623,732.00	0.00	323,171.00	227,345.00	622,652.00	0.00	0.00
13. Idaho	ID	L	1,923,198.00	1,797,105.00	0.00	466,322.00	511,432.00	1,807,152.00	0.00	0.00
14. Illinois	IL	L	5,482,513.00	5,115,504.00	0.00	1,194,994.00	1,464,280.00	6,271,685.00	7,807.00	0.00
15. Indiana	IN	L	1,947,431.00	1,541,495.00	0.00	590,913.00	645,803.00	2,054,219.00	0.00	0.00
16. Iowa	IA	L	895,028.00	856,846.00	0.00	329,627.00	274,292.00	1,192,792.00	0.00	0.00
17. Kansas	KS	L	980,593.00	1,026,125.00	0.00	238,394.00	281,858.00	1,443,221.00	0.00	0.00
18. Kentucky	KY	L	1,751,585.00	1,555,875.00	0.00	412,754.00	705,188.00	1,347,963.00	0.00	0.00
19. Louisiana	LA	L	4,940,901.00	4,744,467.00	0.00	3,336,781.00	6,233,280.00	8,077,335.00	8,960.00	0.00
20. Maine	ME	L	1,474,382.00	1,288,358.00	0.00	712,144.00	657,608.00	538,287.00	0.00	0.00
21. Maryland	MD	L	3,329,610.00	2,150,021.00	0.00	1,571,215.00	3,147,898.00	3,170,421.00	0.00	0.00
22. Massachusetts	MA	L	6,427,747.00	6,043,990.00	0.00	988,164.00	2,617,528.00	9,364,935.00	8,106.00	0.00
23. Michigan	MI	L	3,570,895.00	3,478,397.00	0.00	1,078,371.00	2,102,901.00	4,582,476.00	0.00	0.00
24. Minnesota	MN	L	2,732,645.00	2,525,852.00	0.00	1,272,490.00	3,090,909.00	3,841,966.00	0.00	0.00
25. Mississippi	MS	L	1,638,926.00	1,580,573.00	0.00	624,159.00	1,944,798.00	3,099,763.00	0.00	0.00
26. Missouri	MO	L	2,496,887.00	2,241,423.00	0.00	363,036.00	526,293.00	2,017,291.00	0.00	0.00
27. Montana	MT	L	1,200,511.00	1,177,888.00	0.00	196,476.00	193,050.00	1,223,656.00	0.00	0.00
28. Nebraska	NE	L	808,340.00	753,450.00	0.00	132,641.00	196,572.00	459,269.00	0.00	0.00
29. Nevada	NV	L	2,258,506.00	2,296,049.00	0.00	639,553.00	1,798,129.00	4,115,066.00	0.00	0.00
30. New Hampshire	NH	L	1,423,813.00	1,552,245.00	0.00	226,820.00	(10,273.00)	1,527,409.00	0.00	0.00
31. New Jersey	NJ	L	6,720,257.00	6,659,818.00	0.00	3,431,675.00	3,680,080.00	9,653,616.00	11,217.00	0.00
32. New Mexico	NM	L	1,443,429.00	1,369,120.00	0.00	1,220,487.00	1,095,919.00	2,397,288.00	0.00	0.00
33. New York	NY	L	20,319,777.00	20,215,911.00	0.00	9,480,848.00	13,891,473.00	44,532,706.00	36,230.00	0.00
34. North Carolina	NC	L	4,970,986.00	4,323,588.00	0.00	2,107,665.00	2,626,222.00	4,358,525.00	9,592.00	0.00
35. North Dakota	ND	L	496,725.00	487,643.00	0.00	4,024.00	72,500.00	278,357.00	0.00	0.00
36. Ohio	OH	L	3,237,592.00	2,950,173.00	0.00	752,822.00	1,192,029.00	2,102,979.00	0.00	0.00
37. Oklahoma	OK	L	6,206,216.00	5,028,172.00	0.00	5,019,530.00	6,577,909.00	4,717,037.00	0.00	0.00
38. Oregon	OR	L	2,240,894.00	2,207,884.00	0.00	1,229,671.00	3,738,982.00	4,691,303.00	0.00	0.00
39. Pennsylvania	PA	L	7,344,364.00	7,145,462.00	0.00	3,201,613.00	3,198,762.00	10,091,639.00	12,961.00	0.00
40. Rhode Island	RI	L	2,245,055.00	2,145,117.00	0.00	850,780.00	1,061,573.00	1,926,318.00	0.00	0.00
41. South Carolina	SC	L	2,243,261.00	1,961,524.00	0.00	442,362.00	832,070.00	1,484,758.00	0.00	0.00
42. South Dakota	SD	L	899,450.00	761,578.00	0.00	1,215,769.00	194,952.00	698,407.00	0.00	0.00
43. Tennessee	TN	L	2,445,171.00	2,477,622.00	0.00	961,662.00	1,235,276.00	1,920,868.00	0.00	0.00
44. Texas	TX	L	17,183,715.00	15,864,756.00	0.00	9,907,517.00	10,241,202.00	12,995,188.00	25,508.00	0.00
45. Utah	UT	L	1,289,249.00	1,147,699.00	0.00	164,844.00	1,242,031.00	2,475,541.00	0.00	0.00
46. Vermont	VT	L	1,101,695.00	1,181,285.00	0.00	64,326.00	389,735.00	971,018.00	0.00	0.00
47. Virginia	VA	L	5,549,082.00	4,132,682.00	0.00	1,340,603.00	2,056,708.00	3,257,063.00	0.00	0.00
48. Washington	WA	L	3,803,380.00	3,164,659.00	0.00	1,013,260.00	958,641.00	2,408,072.00	0.00	0.00
49. West Virginia	WV	L	1,074,039.00	974,750.00	0.00	141,727.00	274,041.00	1,095,796.00	0.00	0.00
50. Wisconsin	WI	L	2,551,815.00	2,209,680.00	0.00	337,509.00	353,861.00	1,964,075.00	0.00	0.00
51. Wyoming	WY	L	230,312.00	221,570.00	0.00	67,134.00	(57,904.00)	121,218.00	0.00	0.00
52. American Samoa	AS	N	0.00	0.00	0.00	0.00	0.00	0.00	0.00	0.00
53. Guam	GU	N	0.00	0.00	0.00	0.00	0.00	0.00	0.00	0.00
54. Puerto Rico	PR	N	0.00	0.00	0.00	0.00	0.00	0.00	0.00	0.00
55. U.S. Virgin Islands	VI	N	0.00	0.00	0.00	0.00	0.00	0.00	0.00	0.00
56. Northern Mariana Islands	MP	N	0.00	0.00	0.00	0.00	0.00	0.00	0.00	0.00
57. Canada	CAN	N	0.00	0.00	0.00	0.00	0.00	0.00	0.00	0.00
58. Aggregate other alien	OT	XXX	0.00	0.00	0.00	0.00	0.00	0.00	0.00	0.00
59. Totals	XXX		246,565,388.00	237,007,290.00	0.00	114,165,309.00	147,020,589.00	326,980,788.00	305,141.00	0.00
DETAILS OF WRITE-INS										
58001.	XXX									
58002.	XXX									
58003.	XXX									
58998. Summary of remaining write-ins for Line 58 from overflow page	XXX		0.00	0.00	0.00	0.00	0.00	0.00	0.00	0.00
58999. Totals (Lines 58001 through 58003 plus 58998)(Line 58 above)	XXX		0.00	0.00	0.00	0.00	0.00	0.00	0.00	0.00

(a) Active Status Counts:

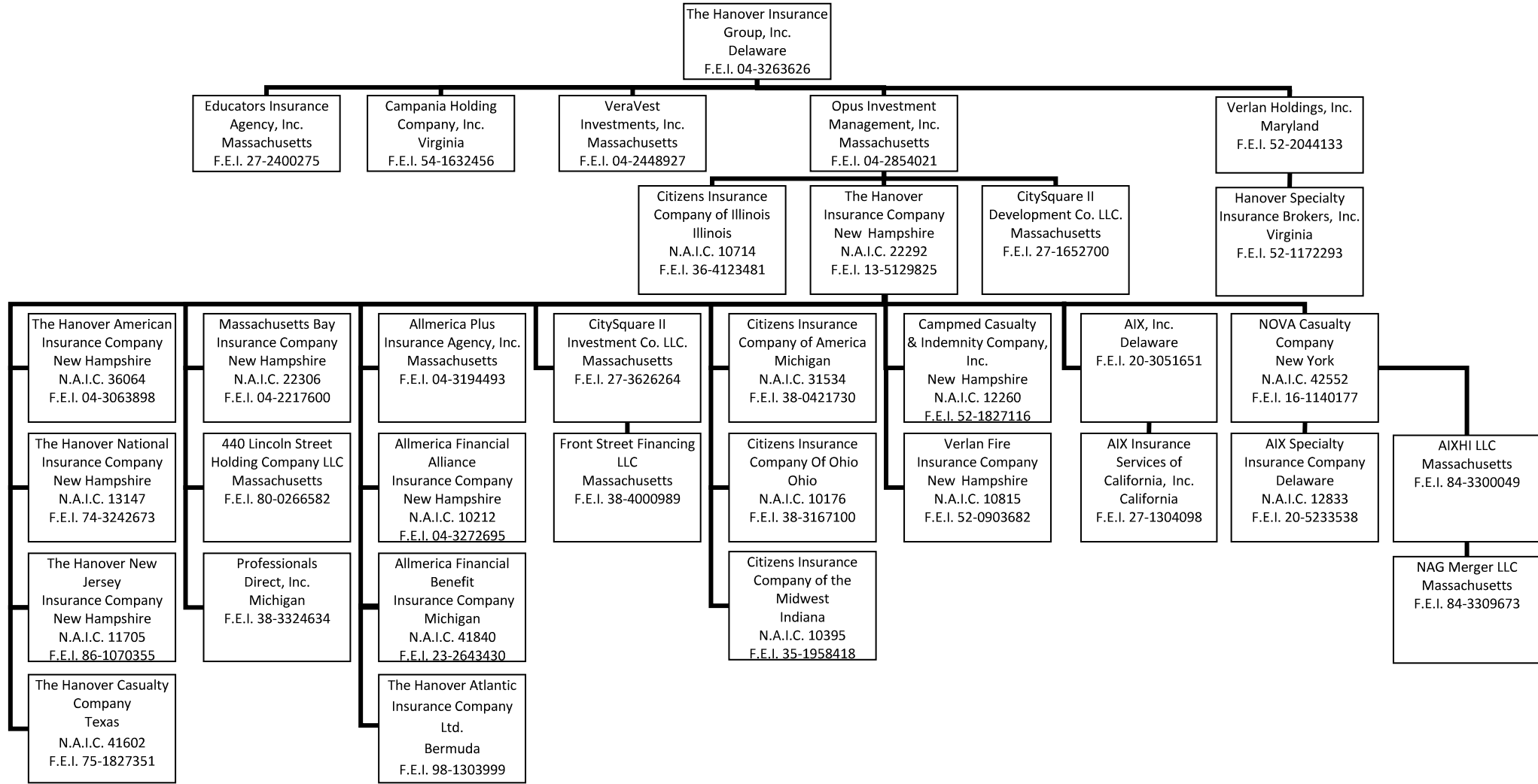
L - Licensed or Chartered - Licensed insurance carrier or domiciled RRG.....51 R - Registered - Non-domiciled RRGs.....0  
 E - Eligible - Reporting entities eligible or approved to write surplus lines in the state (other than their state of domicile - see DSLI).....0 Q - Qualified - Qualified or accredited reinsurer.....0  
 D - Domestic Surplus Lines Insurer (DSLI) - Reporting entities authorized to write surplus business in the state.....6  
 lines in the state of domicile.....0

(b) Explanation of basis of allocation of premiums by states, etc.

Premiums for Auto liability and physical damage are allocated to states based on principal garage. Premiums for Marine and Credit are allocated to those states where the insured is located. All other premiums are allocated to those states where the insured risks are located.

ANNUAL STATEMENT FOR THE YEAR 2020 OF THE NOVA CASUALTY COMPANY

**SCHEDULE Y – INFORMATION CONCERNING ACTIVITIES OF INSURER MEMBERS OF A HOLDING COMPANY GROUP**  
**PART 1 – ORGANIZATIONAL CHART**



Note: All Companies are wholly-owned.

Affiliated Investment Management Company

**NONE**