



PROPERTY AND CASUALTY COMPANIES - ASSOCIATION EDITION

ANNUAL STATEMENT

FOR THE YEAR ENDED DECEMBER 31, 2024
OF THE CONDITION AND AFFAIRS OF THE

Allmerica Financial Alliance Insurance Company

NAIC Group Code00880088NAIC Company Code10212Employer's ID Number04-3272695
(Current)(Prior)

Organized under the Laws ofNew Hampshire, State of Domicile or Port of EntryNH
Country of DomicileUnited States of America

Incorporated/Organized04/26/1995Commenced Business05/24/1995

Statutory Home Office4 Bedford Farms Drive, Suite 107Bedford, NH, US 03110-6528
(Street and Number)(City or Town, State, Country and Zip Code)

Main Administrative Office440 Lincoln Street
(Street and Number)
Worcester, MA, US 01653-0002508-853-7200
(City or Town, State, Country and Zip Code)(Area Code) (Telephone Number)

Mail Address440 Lincoln StreetWorcester, MA, US 01653-0002
(Street and Number or P.O. Box)(City or Town, State, Country and Zip Code)

Primary Location of Books and Records440 Lincoln Street
(Street and Number)
Worcester, MA, US 01653-0002508-853-7200-8557928
(City or Town, State, Country and Zip Code)(Area Code) (Telephone Number)

Internet Website AddressWWW.HANOVER.COM

Statutory Statement ContactDennis M. Hazelwood508-853-7200-8557928
(Name)(Area Code) (Telephone Number)
DHAZELWOOD@HANOVER.COM508-853-6332
(E-mail Address)(FAX Number)

OFFICERS

PresidentJohn Conner RocheVice President & TreasurerNathaniel William Clarkin

Senior Vice President & SecretaryCharles Frederick Cronin

OTHER

Jeffrey Mark Farber, Executive Vice President & CFO
Williard Ty-Lunn Lee, Executive Vice President
Bryan James Salvatore, Executive Vice President

Dennis Francis Kerrigan Jr., Executive Vice President & Chief Legal Officer
David John Lovely #, Executive Vice President

Richard William Lavey, Executive Vice President
Denise Maureen Lowsley, Executive Vice President

DIRECTORS OR TRUSTEES

Warren Ellison Barnes
Dennis Francis Kerrigan Jr.
Denise Maureen Lowsley

Jeffrey Mark Farber
Williard Ty-Lunn Lee
John Conner Roche

Lindsay France Greenfield
David John Lovely
Bryan James Salvatore

State ofMassachusetts
County ofWorcester

SS

The officers of this reporting entity being duly sworn, each depose and say that they are the described officers of said reporting entity, and that on the reporting period stated above, all of the herein described assets were the absolute property of the said reporting entity, free and clear from any liens or claims thereon, except as herein stated, and that this statement, together with related exhibits, schedules and explanations therein contained, annexed or referred to, is a full and true statement of all the assets and liabilities and of the condition and affairs of the said reporting entity as of the reporting period stated above, and of its income and deductions therefrom for the period ended, and have been completed in accordance with the NAIC Annual Statement Instructions and Accounting Practices and Procedures manual except to the extent that: (1) state law may differ; or, (2) that state rules or regulations require differences in reporting not related to accounting practices and procedures, according to the best of their information, knowledge and belief, respectively. Furthermore, the scope of this attestation by the described officers also includes the related corresponding electronic filing with the NAIC, when required, that is an exact copy (except for formatting differences due to electronic filing) of the enclosed statement. The electronic filing may be requested by various regulators in lieu of or in addition to the enclosed statement.

John Conner Roche
President

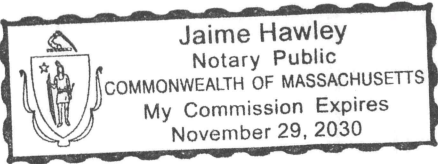
Charles Frederick Cronin
Senior Vice President & Secretary

Nathaniel William Clarkin
Vice President & Treasurer

Subscribed and sworn to before me this
4th day ofFebruary, 2025

Jaime L. Hawley
Notary
November 29, 2030

- a. Is this an original filing? Yes [X] No []
- b. If no,
1. State the amendment number.....
2. Date filed
3. Number of pages attached.....



ASSETS

	Current Year			Prior Year
	1 Assets	2 Nonadmitted Assets	3 Net Admitted Assets (Cols. 1 - 2)	4 Net Admitted Assets
1. Bonds (Schedule D)	28,223,687	0	28,223,687	27,801,806
2. Stocks (Schedule D):				
2.1 Preferred stocks	0	0	0	0
2.2 Common stocks	0	0	0	0
3. Mortgage loans on real estate (Schedule B):				
3.1 First liens	0	0	0	0
3.2 Other than first liens.....	0	0	0	0
4. Real estate (Schedule A):				
4.1 Properties occupied by the company (less \$0 encumbrances)	0	0	0	0
4.2 Properties held for the production of income (less \$0 encumbrances)	0	0	0	0
4.3 Properties held for sale (less \$0 encumbrances)	0	0	0	0
5. Cash (\$ (10) , Schedule E - Part 1), cash equivalents (\$ 121,407 , Schedule E - Part 2) and short-term investments (\$0 , Schedule DA)	121,397	0	121,397	905,335
6. Contract loans (including \$0 premium notes)	0	0	0	0
7. Derivatives (Schedule DB)	0	0	0	0
8. Other invested assets (Schedule BA)	0	0	0	0
9. Receivable for securities	55,700	0	55,700	26,775
10. Securities lending reinvested collateral assets (Schedule DL)	0	0	0	0
11. Aggregate write-ins for invested assets	0	0	0	0
12. Subtotals, cash and invested assets (Lines 1 to 11)	28,400,784	0	28,400,784	28,733,916
13. Title plants less \$0 charged off (for Title insurers only)	0	0	0	0
14. Investment income due and accrued	209,486	0	209,486	216,299
15. Premiums and considerations:				
15.1 Uncollected premiums and agents' balances in the course of collection.....	0	0	0	0
15.2 Deferred premiums, agents' balances and installments booked but deferred and not yet due (including \$0 earned but unbilled premiums)	0	0	0	0
15.3 Accrued retrospective premiums (\$0) and contracts subject to redetermination (\$0)	0	0	0	0
16. Reinsurance:				
16.1 Amounts recoverable from reinsurers	0	0	0	0
16.2 Funds held by or deposited with reinsured companies	0	0	0	0
16.3 Other amounts receivable under reinsurance contracts	0	0	0	0
17. Amounts receivable relating to uninsured plans	0	0	0	0
18.1 Current federal and foreign income tax recoverable and interest thereon	7,511	0	7,511	0
18.2 Net deferred tax asset	0	0	0	0
19. Guaranty funds receivable or on deposit	0	0	0	0
20. Electronic data processing equipment and software	0	0	0	0
21. Furniture and equipment, including health care delivery assets (\$0)	0	0	0	0
22. Net adjustment in assets and liabilities due to foreign exchange rates	0	0	0	0
23. Receivables from parent, subsidiaries and affiliates	0	0	0	0
24. Health care (\$0) and other amounts receivable	0	0	0	0
25. Aggregate write-ins for other-than-invested assets	0	0	0	0
26. Total assets excluding Separate Accounts, Segregated Accounts and Protected Cell Accounts (Lines 12 to 25)	28,617,781	0	28,617,781	28,950,215
27. From Separate Accounts, Segregated Accounts and Protected Cell Accounts	0	0	0	0
28. Total (Lines 26 and 27)	28,617,781	0	28,617,781	28,950,215
DETAILS OF WRITE-INS				
1101.				
1102.				
1103.				
1198. Summary of remaining write-ins for Line 11 from overflow page	0	0	0	0
1199. Totals (Lines 1101 through 1103 plus 1198)(Line 11 above)	0	0	0	0
2501.				
2502.				
2503.				
2598. Summary of remaining write-ins for Line 25 from overflow page	0	0	0	0
2599. Totals (Lines 2501 through 2503 plus 2598)(Line 25 above)	0	0	0	0

ANNUAL STATEMENT FOR THE YEAR 2024 OF THE ALLMERICA FINANCIAL ALLIANCE INSURANCE COMPANY

LIABILITIES, SURPLUS AND OTHER FUNDS

	1 Current Year	2 Prior Year
1. Losses (Part 2A, Line 35, Column 8)	0	0
2. Reinsurance payable on paid losses and loss adjustment expenses (Schedule F, Part 1, Column 6)	0	0
3. Loss adjustment expenses (Part 2A, Line 35, Column 9)	0	0
4. Commissions payable, contingent commissions and other similar charges	0	0
5. Other expenses (excluding taxes, licenses and fees)	0	0
6. Taxes, licenses and fees (excluding federal and foreign income taxes)	0	0
7.1 Current federal and foreign income taxes (including \$0 on realized capital gains (losses))	0	1,305
7.2 Net deferred tax liability	25,914	21,072
8. Borrowed money \$0 and interest thereon \$0	0	0
9. Unearned premiums (Part 1A, Line 38, Column 5) (after deducting unearned premiums for ceded reinsurance of \$117,626,480 and including warranty reserves of \$0 and accrued accident and health experience rating refunds including \$0 for medical loss ratio rebate per the Public Health Service Act)	0	0
10. Advance premium	0	0
11. Dividends declared and unpaid:		
11.1 Stockholders	0	0
11.2 Policyholders	0	0
12. Ceded reinsurance premiums payable (net of ceding commissions)	0	0
13. Funds held by company under reinsurance treaties (Schedule F, Part 3, Column 20)	0	0
14. Amounts withheld or retained by company for account of others	0	0
15. Remittances and items not allocated	0	0
16. Provision for reinsurance (including \$0 certified) (Schedule F, Part 3, Column 78)	0	0
17. Net adjustments in assets and liabilities due to foreign exchange rates	0	0
18. Drafts outstanding	0	0
19. Payable to parent, subsidiaries and affiliates	2,407	13,393
20. Derivatives	0	0
21. Payable for securities	0	0
22. Payable for securities lending	0	0
23. Liability for amounts held under uninsured plans	0	0
24. Capital notes \$0 and interest thereon \$0	0	0
25. Aggregate write-ins for liabilities	2,735	0
26. Total liabilities excluding protected cell liabilities (Lines 1 through 25)	31,056	35,770
27. Protected cell liabilities	0	0
28. Total liabilities (Lines 26 and 27)	31,056	35,770
29. Aggregate write-ins for special surplus funds	0	0
30. Common capital stock	5,000,000	5,000,000
31. Preferred capital stock	0	0
32. Aggregate write-ins for other-than-special surplus funds	0	0
33. Surplus notes	0	0
34. Gross paid in and contributed surplus	14,000,000	14,000,000
35. Unassigned funds (surplus)	9,586,725	9,914,445
36. Less treasury stock, at cost:		
36.10 shares common (value included in Line 30 \$0)	0	0
36.20 shares preferred (value included in Line 31 \$0)	0	0
37. Surplus as regards policyholders (Lines 29 to 35, less 36) (Page 4, Line 39)	28,586,725	28,914,445
38. TOTALS (Page 2, Line 28, Col. 3)	28,617,781	28,950,215
DETAILS OF WRITE-INS		
2501. Miscellaneous Liabilities	2,735	0
2502.		
2503.		
2598. Summary of remaining write-ins for Line 25 from overflow page	0	0
2599. Totals (Lines 2501 through 2503 plus 2598)(Line 25 above)	2,735	0
2901.		
2902.		
2903.		
2998. Summary of remaining write-ins for Line 29 from overflow page	0	0
2999. Totals (Lines 2901 through 2903 plus 2998)(Line 29 above)	0	0
3201.		
3202.		
3203.		
3298. Summary of remaining write-ins for Line 32 from overflow page	0	0
3299. Totals (Lines 3201 through 3203 plus 3298)(Line 32 above)	0	0

STATEMENT OF INCOME

	1 Current Year	2 Prior Year
UNDERWRITING INCOME		
1. Premiums earned (Part 1, Line 35, Column 4).....	0	0
DEDUCTIONS:		
2. Losses incurred (Part 2, Line 35, Column 7)	0	0
3. Loss adjustment expenses incurred (Part 3, Line 25, Column 1)	0	0
4. Other underwriting expenses incurred (Part 3, Line 25, Column 2)	0	0
5. Aggregate write-ins for underwriting deductions	0	0
6. Total underwriting deductions (Lines 2 through 5)	0	0
7. Net income of protected cells	0	0
8. Net underwriting gain (loss) (Line 1 minus Line 6 plus Line 7)	0	0
INVESTMENT INCOME		
9. Net investment income earned (Exhibit of Net Investment Income, Line 17)	972,429	658,042
10. Net realized capital gains (losses) less capital gains tax of \$ (21,025) (Exhibit of Capital Gains (Losses))	(102,097)	(6,077)
11. Net investment gain (loss) (Lines 9 + 10)	870,332	651,965
OTHER INCOME		
12. Net gain (loss) from agents' or premium balances charged off (amount recovered \$0 amount charged off \$0)	0	0
13. Finance and service charges not included in premiums	0	0
14. Aggregate write-ins for miscellaneous income	0	0
15. Total other income (Lines 12 through 14)	0	0
16. Net income before dividends to policyholders, after capital gains tax and before all other federal and foreign income taxes (Lines 8 + 11 + 15)	870,332	651,965
17. Dividends to policyholders	0	0
18. Net income, after dividends to policyholders, after capital gains tax and before all other federal and foreign income taxes (Line 16 minus Line 17)	870,332	651,965
19. Federal and foreign income taxes incurred	193,210	127,765
20. Net income (Line 18 minus Line 19)(to Line 22)	677,122	524,200
CAPITAL AND SURPLUS ACCOUNT		
21. Surplus as regards policyholders, December 31 prior year (Page 4, Line 39, Column 2)	28,914,445	23,399,482
22. Net income (from Line 20)	677,122	524,200
23. Net transfers (to) from Protected Cell accounts	0	0
24. Change in net unrealized capital gains or (losses) less capital gains tax of \$0	0	0
25. Change in net unrealized foreign exchange capital gain (loss)	0	0
26. Change in net deferred income tax	(4,842)	(9,237)
27. Change in nonadmitted assets (Exhibit of Nonadmitted Assets, Line 28, Col. 3)	0	0
28. Change in provision for reinsurance (Page 3, Line 16, Column 2 minus Column 1)	0	0
29. Change in surplus notes	0	0
30. Surplus (contributed to) withdrawn from protected cells	0	0
31. Cumulative effect of changes in accounting principles	0	0
32. Capital changes:		
32.1 Paid in	0	0
32.2 Transferred from surplus (Stock Dividend)	0	0
32.3 Transferred to surplus	0	0
33. Surplus adjustments:		
33.1 Paid in	0	5,000,000
33.2 Transferred to capital (Stock Dividend)	0	0
33.3 Transferred from capital	0	0
34. Net remittances from or (to) Home Office	0	0
35. Dividends to stockholders	(1,000,000)	0
36. Change in treasury stock (Page 3, Lines 36.1 and 36.2, Column 2 minus Column 1)	0	0
37. Aggregate write-ins for gains and losses in surplus	0	0
38. Change in surplus as regards policyholders for the year (Lines 22 through 37)	(327,720)	5,514,963
39. Surplus as regards policyholders, December 31 current year (Line 21 plus Line 38) (Page 3, Line 37)	28,586,725	28,914,445
DETAILS OF WRITE-INS		
0501.		
0502.		
0503.		
0598. Summary of remaining write-ins for Line 5 from overflow page	0	0
0599. Totals (Lines 0501 through 0503 plus 0598)(Line 5 above)	0	0
1401.	0	0
1402.		
1403.		
1498. Summary of remaining write-ins for Line 14 from overflow page	0	0
1499. Totals (Lines 1401 through 1403 plus 1498)(Line 14 above)	0	0
3701.		
3702.		
3703.		
3798. Summary of remaining write-ins for Line 37 from overflow page	0	0
3799. Totals (Lines 3701 through 3703 plus 3798)(Line 37 above)	0	0

ANNUAL STATEMENT FOR THE YEAR 2024 OF THE ALLMERICA FINANCIAL ALLIANCE INSURANCE COMPANY

CASH FLOW

	1	2
	Current Year	Prior Year
Cash from Operations		
1. Premiums collected net of reinsurance	0	0
2. Net investment income	875,211	585,183
3. Miscellaneous income	0	0
4. Total (Lines 1 through 3)	875,211	585,183
5. Benefit and loss related payments	0	0
6. Net transfers to Separate Accounts, Segregated Accounts and Protected Cell Accounts	0	0
7. Commissions, expenses paid and aggregate write-ins for deductions	0	0
8. Dividends paid to policyholders	0	0
9. Federal and foreign income taxes paid (recovered) net of \$ (21,025) tax on capital gains (losses)	181,001	130,000
10. Total (Lines 5 through 9)	181,001	130,000
11. Net cash from operations (Line 4 minus Line 10)	694,210	455,183
Cash from Investments		
12. Proceeds from investments sold, matured or repaid:		
12.1 Bonds	5,868,478	3,409,427
12.2 Stocks	0	0
12.3 Mortgage loans	0	0
12.4 Real estate	0	0
12.5 Other invested assets	0	0
12.6 Net gains or (losses) on cash, cash equivalents and short-term investments	302	0
12.7 Miscellaneous proceeds	0	0
12.8 Total investment proceeds (Lines 12.1 to 12.7)	5,868,780	3,409,427
13. Cost of investments acquired (long-term only):		
13.1 Bonds	7,305,462	3,339,004
13.2 Stocks	0	0
13.3 Mortgage loans	0	0
13.4 Real estate	0	0
13.5 Other invested assets	0	0
13.6 Miscellaneous applications	28,925	9,834
13.7 Total investments acquired (Lines 13.1 to 13.6)	7,334,387	3,348,838
14. Net increase/(decrease) in contract loans and premium notes	0	0
15. Net cash from investments (Line 12.8 minus Line 13.7 minus Line 14)	(1,465,607)	60,590
Cash from Financing and Miscellaneous Sources		
16. Cash provided (applied):		
16.1 Surplus notes, capital notes	0	0
16.2 Capital and paid in surplus, less treasury stock	0	49,714
16.3 Borrowed funds	0	0
16.4 Net deposits on deposit-type contracts and other insurance liabilities	0	0
16.5 Dividends to stockholders	4,290	0
16.6 Other cash provided (applied)	(8,251)	11,781
17. Net cash from financing and miscellaneous sources (Lines 16.1 to 16.4 minus Line 16.5 plus Line 16.6)	(12,541)	61,495
RECONCILIATION OF CASH, CASH EQUIVALENTS AND SHORT-TERM INVESTMENTS		
18. Net change in cash, cash equivalents and short-term investments (Line 11, plus Lines 15 and 17)	(783,938)	577,267
19. Cash, cash equivalents and short-term investments:		
19.1 Beginning of year	905,335	328,068
19.2 End of period (Line 18 plus Line 19.1)	121,397	905,335
Note: Supplemental disclosures of cash flow information for non-cash transactions:		
20.0001. Bonds sold in settlement of intercompany dividend	(984,202)	0
20.0002. Accrued interest on bonds sold in settlement of intercompany dividend	(11,508)	0

Underwriting and Investment Exhibit - Part 1 - Premiums Earned

N O N E

Underwriting and Investment Exhibit - Part 1A - Recapitulation of all Premiums

N O N E

UNDERWRITING AND INVESTMENT EXHIBIT

PART 1B - PREMIUMS WRITTEN

Line of Business	1	Reinsurance Assumed		Reinsurance Ceded		6
	Direct Business (a)	2	3	4	5	Net Premiums Written Cols. 1+2+3-4-5
1. Fire	0	0	0	0	0	0
2.1 Allied lines	0	0	0	0	0	0
2.2 Multiple peril crop	0	0	0	0	0	0
2.3 Federal flood	0	0	0	0	0	0
2.4 Private crop	0	0	0	0	0	0
2.5 Private flood	0	0	0	0	0	0
3. Farmowners multiple peril	0	0	0	0	0	0
4. Homeowners multiple peril	0	0	0	0	0	0
5.1 Commercial multiple peril (non-liability portion)	0	0	0	0	0	0
5.2 Commercial multiple peril (liability portion)	0	0	0	0	0	0
6. Mortgage guaranty	0	0	0	0	0	0
8. Ocean marine	0	0	0	0	0	0
9.1 Inland marine	0	0	0	0	0	0
9.2 Pet insurance plans	0	0	0	0	0	0
10. Financial guaranty	0	0	0	0	0	0
11.1 Medical professional liability - occurrence	0	0	0	0	0	0
11.2 Medical professional liability - claims-made	0	0	0	0	0	0
12. Earthquake	0	0	0	0	0	0
13.1 Comprehensive (hospital and medical) individual	0	0	0	0	0	0
13.2 Comprehensive (hospital and medical) group	0	0	0	0	0	0
14. Credit accident and health (group and individual)	0	0	0	0	0	0
15.1 Vision only	0	0	0	0	0	0
15.2 Dental only	0	0	0	0	0	0
15.3 Disability income	0	0	0	0	0	0
15.4 Medicare supplement	0	0	0	0	0	0
15.5 Medicaid Title XIX	0	0	0	0	0	0
15.6 Medicare Title XVIII	0	0	0	0	0	0
15.7 Long-term care	0	0	0	0	0	0
15.8 Federal employees health benefits plan	0	0	0	0	0	0
15.9 Other health	0	0	0	0	0	0
16. Workers' compensation	34,166,947	0	0	34,166,947	0	0
17.1 Other liability - occurrence	0	0	0	0	0	0
17.2 Other liability - claims-made	0	0	0	0	0	0
17.3 Excess workers' compensation	0	0	0	0	0	0
18.1 Products liability - occurrence	0	0	0	0	0	0
18.2 Products liability - claims-made	0	0	0	0	0	0
19.1 Private passenger auto no-fault (personal injury protection)	8,532,515	0	0	8,532,515	0	0
19.2 Other private passenger auto liability.....	92,075,805	0	0	92,075,805	0	0
19.3 Commercial auto no-fault (personal injury protection)	0	0	0	0	0	0
19.4 Other commercial auto liability.....	0	0	0	0	0	0
21.1 Private passenger auto physical damage	102,271,519	0	0	102,271,519	0	0
21.2 Commercial auto physical damage	0	0	0	0	0	0
22. Aircraft (all perils)	0	0	0	0	0	0
23. Fidelity	0	0	0	0	0	0
24. Surety	0	0	0	0	0	0
26. Burglary and theft	0	0	0	0	0	0
27. Boiler and machinery	0	0	0	0	0	0
28. Credit	0	0	0	0	0	0
29. International	0	0	0	0	0	0
30. Warranty	0	0	0	0	0	0
31. Reinsurance - nonproportional assumed property	XXX	0	0	0	0	0
32. Reinsurance - nonproportional assumed liability	XXX	0	0	0	0	0
33. Reinsurance - nonproportional assumed financial lines	XXX	0	0	0	0	0
34. Aggregate write-ins for other lines of business	0	0	0	0	0	0
35. TOTALS	237,046,786	0	0	237,046,786	0	0
DETAILS OF WRITE-INS						
3401.						
3402.						
3403.						
3498. Summary of remaining write-ins for Line 34 from overflow page	0	0	0	0	0	0
3499. Totals (Lines 3401 through 3403 plus 3498)(Line 34 above)	0	0	0	0	0	0

(a) Does the company's direct premiums written include premiums recorded on an installment basis? Yes [] No [X]

If yes: 1. The amount of such installment premiums \$ 0

 2. Amount at which such installment premiums would have been reported had they been reported on an annualized basis \$ 0

ANNUAL STATEMENT FOR THE YEAR 2024 OF THE ALLMERICA FINANCIAL ALLIANCE INSURANCE COMPANY

UNDERWRITING AND INVESTMENT EXHIBIT

PART 2 - LOSSES PAID AND INCURRED

Line of Business	Losses Paid Less Salvage				5	6	7	8
	1	2	3	4				
	Direct Business	Reinsurance Assumed	Reinsurance Recovered	Net Payments (Cols. 1 + 2 - 3)	Net Losses Unpaid Current Year (Part 2A , Col. 8)	Net Losses Unpaid Prior Year	Losses Incurred Current Year (Cols. 4 + 5 - 6)	Percentage of Losses Incurred (Col. 7, Part 2) to Premiums Earned (Col. 4, Part 1)
1. Fire	0	0	0	0	0	0	0	0.0
2.1 Allied lines	0	0	0	0	0	0	0	0.0
2.2 Multiple peril crop	0	0	0	0	0	0	0	0.0
2.3 Federal flood	0	0	0	0	0	0	0	0.0
2.4 Private crop	0	0	0	0	0	0	0	0.0
2.5 Private flood	0	0	0	0	0	0	0	0.0
3. Farmowners multiple peril	0	0	0	0	0	0	0	0.0
4. Homeowners multiple peril	0	0	0	0	0	0	0	0.0
5.1 Commercial multiple peril (non-liability portion)	0	0	0	0	0	0	0	0.0
5.2 Commercial multiple peril (liability portion)	0	0	0	0	0	0	0	0.0
6. Mortgage guaranty	0	0	0	0	0	0	0	0.0
8. Ocean marine	0	0	0	0	0	0	0	0.0
9.1 Inland marine	0	0	0	0	0	0	0	0.0
9.2 Pet insurance plans	0	0	0	0	0	0	0	0.0
10. Financial guaranty	0	0	0	0	0	0	0	0.0
11.1 Medical professional liability - occurrence	0	0	0	0	0	0	0	0.0
11.2 Medical professional liability - claims-made	0	0	0	0	0	0	0	0.0
12. Earthquake	0	0	0	0	0	0	0	0.0
13.1 Comprehensive (hospital and medical) individual	0	0	0	0	0	0	0	0.0
13.2 Comprehensive (hospital and medical) group	0	0	0	0	0	0	0	0.0
14. Credit accident and health (group and individual)	0	0	0	0	0	0	0	0.0
15.1 Vision only	0	0	0	0	0	0	0	0.0
15.2 Dental only	0	0	0	0	0	0	0	0.0
15.3 Disability income	0	0	0	0	0	0	0	0.0
15.4 Medicare supplement	0	0	0	0	0	0	0	0.0
15.5 Medicaid Title XIX	0	0	0	0	0	0	0	0.0
15.6 Medicare Title XVIII	0	0	0	0	0	0	0	0.0
15.7 Long-term care	0	0	0	0	0	0	0	0.0
15.8 Federal employees health benefits plan	0	0	0	0	0	0	0	0.0
15.9 Other health	0	0	0	0	0	0	0	0.0
16. Workers' compensation	8,026,478	2	8,026,480	0	0	0	0	0.0
17.1 Other liability - occurrence	0	0	0	0	0	0	0	0.0
17.2 Other liability - claims-made	0	0	0	0	0	0	0	0.0
17.3 Excess workers' compensation	0	0	0	0	0	0	0	0.0
18.1 Products liability - occurrence	0	0	0	0	0	0	0	0.0
18.2 Products liability - claims-made	0	0	0	0	0	0	0	0.0
19.1 Private passenger auto no-fault (personal injury protection)	4,790,858	0	4,790,858	0	0	0	0	0.0
19.2 Other private passenger auto liability.....	60,391,348	0	60,391,348	0	0	0	0	0.0
19.3 Commercial auto no-fault (personal injury protection)	0	0	0	0	0	0	0	0.0
19.4 Other commercial auto liability.....	0	0	0	0	0	0	0	0.0
21.1 Private passenger auto physical damage	58,063,988	0	58,063,988	0	0	0	0	0.0
21.2 Commercial auto physical damage	0	0	0	0	0	0	0	0.0
22. Aircraft (all perils)	0	0	0	0	0	0	0	0.0
23. Fidelity	0	0	0	0	0	0	0	0.0
24. Surety	0	0	0	0	0	0	0	0.0
26. Burglary and theft	0	0	0	0	0	0	0	0.0
27. Boiler and machinery	0	0	0	0	0	0	0	0.0
28. Credit	0	0	0	0	0	0	0	0.0
29. International	0	0	0	0	0	0	0	0.0
30. Warranty	0	0	0	0	0	0	0	0.0
31. Reinsurance - nonproportional assumed property	XXX	0	0	0	0	0	0	0.0
32. Reinsurance - nonproportional assumed liability	XXX	0	0	0	0	0	0	0.0
33. Reinsurance - nonproportional assumed financial lines	XXX	0	0	0	0	0	0	0.0
34. Aggregate write-ins for other lines of business	0	0	0	0	0	0	0	0.0
35. TOTALS	131,272,672	2	131,272,674	0	0	0	0	0.0
DETAILS OF WRITE-INS								
3401.								
3402.								
3403.								
3498. Summary of remaining write-ins for Line 34 from overflow page	0	0	0	0	0	0	0	0.0
3499. Totals (Lines 3401 through 3403 plus 3498)(Line 34 above)	0	0	0	0	0	0	0	0.0

ANNUAL STATEMENT FOR THE YEAR 2024 OF THE ALLMERICA FINANCIAL ALLIANCE INSURANCE COMPANY

UNDERWRITING AND INVESTMENT EXHIBIT

PART 2A - UNPAID LOSSES AND LOSS ADJUSTMENT EXPENSES

Line of Business	Reported Losses				Incurred But Not Reported			8	9
	1	2	3	4	5	6	7		
	Direct	Reinsurance Assumed	Deduct Reinsurance Recoverable	Net Losses Excl. Incurred But Not Reported (Cols. 1 + 2 - 3)	Direct	Reinsurance Assumed	Reinsurance Ceded	Net Losses Unpaid (Cols. 4 + 5 + 6 - 7)	Net Unpaid Loss Adjustment Expenses
1. Fire	0	0	0	0	0	0	0	0	0
2.1 Allied lines	0	0	0	0	0	0	0	0	0
2.2 Multiple peril crop	0	0	0	0	0	0	0	0	0
2.3 Federal flood	0	0	0	0	0	0	0	0	0
2.4 Private crop	0	0	0	0	0	0	0	0	0
2.5 Private flood	0	0	0	0	0	0	0	0	0
3. Farmowners multiple peril	0	0	0	0	0	0	0	0	0
4. Homeowners multiple peril	0	0	0	0	0	0	0	0	0
5.1 Commercial multiple peril (non-liability portion)	0	0	0	0	0	0	0	0	0
5.2 Commercial multiple peril (liability portion)	0	0	0	0	0	0	0	0	0
6. Mortgage guaranty	0	0	0	0	0	0	0	0	0
8. Ocean marine	0	0	0	0	0	0	0	0	0
9.1 Inland marine	0	0	0	0	0	0	0	0	0
9.2 Pet insurance plans	0	0	0	0	0	0	0	0	0
10. Financial guaranty	0	0	0	0	0	0	0	0	0
11.1 Medical professional liability - occurrence	0	0	0	0	0	0	0	0	0
11.2 Medical professional liability - claims-made	0	0	0	0	0	0	0	0	0
12. Earthquake	0	0	0	0	0	0	0	0	0
13.1 Comprehensive (hospital and medical) individual	0	0	0	0	0	0	0	(a)	0
13.2 Comprehensive (hospital and medical) group	0	0	0	0	0	0	0	(a)	0
14. Credit accident and health (group and individual)	0	0	0	0	0	0	0	0	0
15.1 Vision only	0	0	0	0	0	0	0	(a)	0
15.2 Dental only	0	0	0	0	0	0	0	(a)	0
15.3 Disability income	0	0	0	0	0	0	0	(a)	0
15.4 Medicare supplement	0	0	0	0	0	0	0	(a)	0
15.5 Medicaid Title XIX	0	0	0	0	0	0	0	(a)	0
15.6 Medicare Title XVIII	0	0	0	0	0	0	0	(a)	0
15.7 Long-term care	0	0	0	0	0	0	0	(a)	0
15.8 Federal employees health benefits plan	0	0	0	0	0	0	0	(a)	0
15.9 Other health	0	0	0	0	0	0	0	(a)	0
16. Workers' compensation	13,065,182	5	13,065,187	0	10,945,821	4	10,945,825	0	0
17.1 Other liability - occurrence	0	0	0	0	0	0	0	0	0
17.2 Other liability - claims-made	0	0	0	0	0	0	0	0	0
17.3 Excess workers' compensation	0	0	0	0	0	0	0	0	0
18.1 Products liability - occurrence	0	0	0	0	0	0	0	0	0
18.2 Products liability - claims-made	0	0	0	0	0	0	0	0	0
19.1 Private passenger auto no-fault (personal injury protection)	2,924,584	0	2,924,584	0	1,505,933	0	1,505,933	0	0
19.2 Other private passenger auto liability	56,107,846	0	56,107,846	0	49,126,304	0	49,126,304	0	0
19.3 Commercial auto no-fault (personal injury protection)	0	0	0	0	0	0	0	0	0
19.4 Other commercial auto liability	0	0	0	0	0	0	0	0	0
21.1 Private passenger auto physical damage	2,431,970	0	2,431,970	0	(733,621)	0	(733,621)	0	0
21.2 Commercial auto physical damage	0	0	0	0	0	0	0	0	0
22. Aircraft (all perils)	0	0	0	0	0	0	0	0	0
23. Fidelity	0	0	0	0	0	0	0	0	0
24. Surety	0	0	0	0	0	0	0	0	0
26. Burglary and theft	0	0	0	0	0	0	0	0	0
27. Boiler and machinery	0	0	0	0	0	0	0	0	0
28. Credit	0	0	0	0	0	0	0	0	0
29. International	0	0	0	0	0	0	0	0	0
30. Warranty	0	0	0	0	0	0	0	0	0
31. Reinsurance - nonproportional assumed property	XXX	0	0	0	XXX	0	0	0	0
32. Reinsurance - nonproportional assumed liability	XXX	0	0	0	XXX	0	0	0	0
33. Reinsurance - nonproportional assumed financial lines	XXX	0	0	0	XXX	0	0	0	0
34. Aggregate write-ins for other lines of business	0	0	0	0	0	0	0	0	0
35. TOTALS	74,529,582	5	74,529,587	0	60,844,437	4	60,844,441	0	0
DETAILS OF WRITE-INS									
3401.									
3402.									
3403.									
3498. Summary of remaining write-ins for Line 34 from overflow page	0	0	0	0	0	0	0	0	0
3499. Totals (Lines 3401 through 3403 plus 3498)(Line 34 above)	0	0	0	0	0	0	0	0	0

(a) Including \$0 for present value of life indemnity claims reported in Lines 13 and 15.

ANNUAL STATEMENT FOR THE YEAR 2024 OF THE ALLMERICA FINANCIAL ALLIANCE INSURANCE COMPANY

UNDERWRITING AND INVESTMENT EXHIBIT

PART 3 - EXPENSES

	1	2	3	4
	Loss Adjustment Expenses	Other Underwriting Expenses	Investment Expenses	Total
1. Claim adjustment services:				
1.1 Direct	8,081,535	0	0	8,081,535
1.2 Reinsurance assumed	0	0	0	0
1.3 Reinsurance ceded	8,081,535	0	0	8,081,535
1.4 Net claim adjustment service (1.1 + 1.2 - 1.3)	0	0	0	0
2. Commission and brokerage:				
2.1 Direct excluding contingent	0	29,757,531	0	29,757,531
2.2 Reinsurance assumed, excluding contingent	0	0	0	0
2.3 Reinsurance ceded, excluding contingent	0	29,757,531	0	29,757,531
2.4 Contingent - direct	0	2,860,119	0	2,860,119
2.5 Contingent - reinsurance assumed	0	0	0	0
2.6 Contingent - reinsurance ceded	0	2,860,119	0	2,860,119
2.7 Policy and membership fees	0	0	0	0
2.8 Net commission and brokerage (2.1 + 2.2 - 2.3 + 2.4 + 2.5 - 2.6 + 2.7) ..	0	0	0	0
3. Allowances to managers and agents	0	0	0	0
4. Advertising	0	0	5	5
5. Boards, bureaus and associations	0	0	0	0
6. Surveys and underwriting reports	0	0	0	0
7. Audit of assureds' records	0	0	0	0
8. Salary and related items:				
8.1 Salaries	0	0	16,491	16,491
8.2 Payroll taxes	0	0	0	0
9. Employee relations and welfare	0	0	3,279	3,279
10. Insurance	0	0	0	0
11. Directors' fees	0	0	0	0
12. Travel and travel items	0	0	178	178
13. Rent and rent items	0	0	539	539
14. Equipment	0	0	3,903	3,903
15. Cost or depreciation of EDP equipment and software	0	0	0	0
16. Printing and stationery	0	0	25	25
17. Postage, telephone and telegraph, exchange and express	0	0	34	34
18. Legal and auditing	0	0	275	275
19. Totals (Lines 3 to 18)	0	0	24,729	24,729
20. Taxes, licenses and fees:				
20.1 State and local insurance taxes deducting guaranty association credits of \$0	0	0	0	0
20.2 Insurance department licenses and fees	0	0	0	0
20.3 Gross guaranty association assessments	0	0	0	0
20.4 All other (excluding federal and foreign income and real estate)	0	0	0	0
20.5 Total taxes, licenses and fees (20.1 + 20.2 + 20.3 + 20.4)	0	0	0	0
21. Real estate expenses	0	0	0	0
22. Real estate taxes	0	0	0	0
23. Reimbursements by uninsured plans	0	0	0	0
24. Aggregate write-ins for miscellaneous expenses	0	0	21,263	21,263
25. Total expenses incurred	0	0	45,992 (a)	45,992
26. Less unpaid expenses - current year	0	0	0	0
27. Add unpaid expenses - prior year	0	0	0	0
28. Amounts receivable relating to uninsured plans, prior year	0	0	0	0
29. Amounts receivable relating to uninsured plans, current year	0	0	0	0
30. TOTAL EXPENSES PAID (Lines 25 - 26 + 27 - 28 + 29)	0	0	45,992	45,992
DETAILS OF WRITE-INS				
2401. Custodial Fees	0	0	13,246	13,246
2402. Outside Data Processing	0	0	6,482	6,482
2403. Miscellaneous	0	0	1,535	1,535
2498. Summary of remaining write-ins for Line 24 from overflow page	0	0	0	0
2499. Totals (Lines 2401 through 2403 plus 2498)(Line 24 above)	0	0	21,263	21,263

(a) Includes management fees of \$ 26,439 to affiliates and \$ 6,307 to non-affiliates.

ANNUAL STATEMENT FOR THE YEAR 2024 OF THE ALLMERICA FINANCIAL ALLIANCE INSURANCE COMPANY

EXHIBIT OF NET INVESTMENT INCOME

		1	2
		Collected During Year	Earned During Year
1.	U.S. Government bonds	(a) 279,826 271,037
1.1	Bonds exempt from U.S. tax	(a) 25,982 18,982
1.2	Other bonds (unaffiliated)	(a) 673,718 686,198
1.3	Bonds of affiliates	(a) 0 0
2.1	Preferred stocks (unaffiliated)	(b) 0 0
2.11	Preferred stocks of affiliates	(b) 0 0
2.2	Common stocks (unaffiliated) 0 0
2.21	Common stocks of affiliates 0 0
3.	Mortgage loans	(c) 0 0
4.	Real estate	(d) 0 0
5	Contract loans 0 0
6	Cash, cash equivalents and short-term investments	(e) 45,457 41,954
7	Derivative instruments	(f) 0 0
8.	Other invested assets 0 0
9.	Aggregate write-ins for investment income 251 251
10.	Total gross investment income	1,025,234	1,018,421
11.	Investment expenses		(g) 45,992
12.	Investment taxes, licenses and fees, excluding federal income taxes		(g) 0
13.	Interest expense		(h) 0
14.	Depreciation on real estate and other invested assets		(i) 0
15.	Aggregate write-ins for deductions from investment income 0
16.	Total deductions (Lines 11 through 15) 45,992
17.	Net investment income (Line 10 minus Line 16)		972,429
DETAILS OF WRITE-INS			
0901.	Miscellaneous Investment Income 251 251
0902.		
0903.		
0998.	Summary of remaining write-ins for Line 9 from overflow page 0 0
0999.	Totals (Lines 0901 through 0903 plus 0998) (Line 9, above)	251	251
1501.		
1502.		
1503.		
1598.	Summary of remaining write-ins for Line 15 from overflow page 0
1599.	Totals (Lines 1501 through 1503 plus 1598) (Line 15, above)		0

- (a) Includes \$ 114,485 accrual of discount less \$ 21,961 amortization of premium and less \$ 26,432 paid for accrued interest on purchases.
- (b) Includes \$ 0 accrual of discount less \$ 0 amortization of premium and less \$ 0 paid for accrued dividends on purchases.
- (c) Includes \$ 0 accrual of discount less \$ 0 amortization of premium and less \$ 0 paid for accrued interest on purchases.
- (d) Includes \$ 0 for company's occupancy of its own buildings; and excludes \$ 0 interest on encumbrances.
- (e) Includes \$ 5,392 accrual of discount less \$ 0 amortization of premium and less \$ 0 paid for accrued interest on purchases.
- (f) Includes \$ 0 accrual of discount less \$ 0 amortization of premium.
- (g) Includes \$ 0 investment expenses and \$ 0 investment taxes, licenses and fees, excluding federal income taxes, attributable to segregated and Separate Accounts.
- (h) Includes \$ 0 interest on surplus notes and \$ 0 interest on capital notes.
- (i) Includes \$ 0 depreciation on real estate and \$ 0 depreciation on other invested assets.

EXHIBIT OF CAPITAL GAINS (LOSSES)

		1	2	3	4	5
		Realized Gain (Loss) On Sales or Maturity	Other Realized Adjustments	Total Realized Capital Gain (Loss) (Columns 1 + 2)	Change in Unrealized Capital Gain (Loss)	Change in Unrealized Foreign Exchange Capital Gain (Loss)
1.	U.S. Government bonds	(19,083)	0	(19,083)	0	0
1.1	Bonds exempt from U.S. tax	13,135	0	13,135	0	0
1.2	Other bonds (unaffiliated)	(117,476)	0	(117,476)	0	0
1.3	Bonds of affiliates	0	0	0	0	0
2.1	Preferred stocks (unaffiliated)	0	0	0	0	0
2.11	Preferred stocks of affiliates	0	0	0	0	0
2.2	Common stocks (unaffiliated)	0	0	0	0	0
2.21	Common stocks of affiliates	0	0	0	0	0
3.	Mortgage loans	0	0	0	0	0
4.	Real estate	0	0	0	0	0
5.	Contract loans	0	0	0	0	0
6.	Cash, cash equivalents and short-term investments	302	0	302	0	0
7.	Derivative instruments	0	0	0	0	0
8.	Other invested assets	0	0	0	0	0
9.	Aggregate write-ins for capital gains (losses)	0	0	0	0	0
10.	Total capital gains (losses)	(123,122)	0	(123,122)	0	0
DETAILS OF WRITE-INS						
0901.					
0902.					
0903.					
0998.	Summary of remaining write-ins for Line 9 from overflow page	0	0	0	0	0
0999.	Totals (Lines 0901 through 0903 plus 0998) (Line 9, above)	0	0	0	0	0

ANNUAL STATEMENT FOR THE YEAR 2024 OF THE ALLMERICA FINANCIAL ALLIANCE INSURANCE COMPANY

EXHIBIT OF NON-ADMITTED ASSETS

	1	2	3
	Current Year Total Nonadmitted Assets	Prior Year Total Nonadmitted Assets	Change in Total Nonadmitted Assets (Col. 2 - Col. 1)
1. Bonds (Schedule D)			
2. Stocks (Schedule D):			
2.1 Preferred stocks			
2.2 Common stocks			
3. Mortgage loans on real estate (Schedule B):			
3.1 First liens			
3.2 Other than first liens			
4. Real estate (Schedule A):			
4.1 Properties occupied by the company			
4.2 Properties held for the production of income			
4.3 Properties held for sale			
5. Cash (Schedule E - Part 1), cash equivalents (Schedule E - Part 2) and short-term investments (Schedule DA)			
6. Contract loans			
7. Derivatives (Schedule DB)			
8. Other invested assets (Schedule BA)			
9. Receivables for securities			
10. Securities lending reinvested collateral assets (Schedule DL)			
11. Aggregate write-ins for invested assets			
12. Subtotals, cash and invested assets (Lines 1 to 11)			
13. Title plants (for Title insurers only)			
14. Investment income due and accrued			
15. Premiums and considerations:			
15.1 Uncollected premiums and agents' balances in the course of collection			
15.2 Deferred premiums, agents' balances and installments booked but deferred and not yet due			
15.3 Accrued retrospective premiums and contracts subject to redetermination			
16. Reinsurance:			
16.1 Amounts recoverable from reinsurers			
16.2 Funds held by or deposited with reinsured companies			
16.3 Other amounts receivable under reinsurance contracts			
17. Amounts receivable relating to uninsured plans			
18.1 Current federal and foreign income tax recoverable and interest thereon			
18.2 Net deferred tax asset			
19. Guaranty funds receivable or on deposit			
20. Electronic data processing equipment and software			
21. Furniture and equipment, including health care delivery assets			
22. Net adjustment in assets and liabilities due to foreign exchange rates			
23. Receivables from parent, subsidiaries and affiliates			
24. Health care and other amounts receivable			
25. Aggregate write-ins for other-than-invested assets			
26. Total assets excluding Separate Accounts, Segregated Accounts and Protected Cell Accounts (Lines 12 to 25)			
27. From Separate Accounts, Segregated Accounts and Protected Cell Accounts			
28. Total (Lines 26 and 27)			
DETAILS OF WRITE-INS			
1101.			
1102.			
1103.			
1198. Summary of remaining write-ins for Line 11 from overflow page			
1199. Totals (Lines 1101 through 1103 plus 1198)(Line 11 above)			
2501.			
2502.			
2503.			
2598. Summary of remaining write-ins for Line 25 from overflow page			
2599. Totals (Lines 2501 through 2503 plus 2598)(Line 25 above)			

NOTES TO FINANCIAL STATEMENTS

NOTE 1 Summary of Significant Accounting Policies and Going Concern

A. Accounting Practices

The financial statements of Allmerica Financial Alliance Insurance Company (“the Company”) are presented on the basis of accounting practices prescribed or permitted by the State of New Hampshire Insurance Department.

The State of New Hampshire Insurance Department recognizes only statutory accounting practices prescribed or permitted by the State of New Hampshire for determining and reporting the financial condition and results of operations of an insurance company, for determining its solvency under the New Hampshire Insurance Law. The National Association of Insurance Commissioners (“NAIC”) “Accounting Practices and Procedures Manual” (“NAIC SAP”) has been adopted as a component of prescribed or permitted practices by the State of New Hampshire. The State has not adopted any prescribed accounting practices that differ from those found in NAIC SAP.

A reconciliation of the Company’s net income and capital and surplus between NAIC SAP and practices prescribed and permitted by the State of New Hampshire is shown below:

	SSAP #	F/S Page	F/S Line #	2024	2023
NET INCOME					
(1) State basis (Page 4, Line 20, Columns 1 & 2)	XXX	XXX	XXX	\$ 677,122	\$ 524,200
(2) State Prescribed Practices that are an increase/ (decrease) from NAIC SAP:				\$ -	\$ -
(3) State Permitted Practices that are an increase/(decrease) from NAIC SAP:				\$ -	\$ -
(4) NAIC SAP (1-2-3=4)	XXX	XXX	XXX	<u>\$ 677,122</u>	<u>\$ 524,200</u>
SURPLUS					
(5) State basis (Page 3, Line 37, Columns 1 & 2)	XXX	XXX	XXX	\$ 28,586,725	\$ 28,914,445
(6) State Prescribed Practices that are an increase/(decrease) from NAIC SAP:				\$ -	\$ -
(7) State Permitted Practices that are an increase/(decrease) from NAIC SAP:				\$ -	\$ -
(8) NAIC SAP (5-6-7=8)	XXX	XXX	XXX	<u>\$ 28,586,725</u>	<u>\$ 28,914,445</u>

B. Use of Estimates in the Preparation of the Financial Statements

The preparation of financial statements in conformity with Statutory Accounting Principles requires management to make estimates and assumptions that affect the reported amounts of assets and liabilities. It also requires disclosure of contingent assets and liabilities at the date of the financial statements and the reported amounts of revenue and expenses during the period. Actual results could differ from those estimates.

C. Accounting Policy

- (1) Short-term investments are stated at amortized cost.
- (2) Bonds not backed by loans are stated at either amortized cost or fair value, using the scientific interest method, in accordance with the NAIC Purposes and Procedures of the Securities Valuation Office.
- (3) The Company does not own any common stocks.
- (4) The Company does not own any preferred stocks.
- (5) The Company does not own any mortgage loans.
- (6) Loan-backed securities are stated at either amortized cost or fair value, in accordance with the NAIC Purposes and Procedures of the Securities Valuation Office.
- (7) The Company does not own any stocks of, or have any interest in, any subsidiaries.
- (8) The Company does not own any other invested assets.
- (9) The Company does not own any derivatives.
- (10) The Company does utilize anticipated investment income as a factor in the premium deficiency calculation.
- (11) Unpaid losses and loss adjustment expenses include an amount determined from individual case estimates and loss reports and an amount, based on past experience, for losses incurred but not reported (“IBNR”). Such liabilities are necessarily based on assumptions and estimates and while management believes the amount is adequate, the ultimate liability may be in excess of or less than the amount provided. The methods for making such estimates and for establishing the resulting liabilities are continually reviewed and any adjustments are reflected in the period determined.
- (12) The Company has not modified its capitalization policy from the prior year.
- (13) The Company does not write major medical insurance with prescription drug coverage.

D. Going Concern

Not applicable

NOTE 2 Accounting Changes and Corrections of Errors

Not applicable

NOTE 3 Business Combinations and Goodwill

Not applicable

NOTES TO FINANCIAL STATEMENTS

NOTE 4 Discontinued Operations

Not applicable

NOTE 5 Investments

A.,B.,C.

Not Applicable

D. Loan-Backed Securities

- (1) Prepayment assumptions for loan-backed and structured securities were obtained from prepayment models that are sensitive to refinancing, turnover, equity take-out and other relevant factors. These assumptions are consistent with the current interest rate and economic environment.
- (2) Not applicable
- (3) The Company had no securities with a recognized other-than-temporary impairment.
- (4) All impaired securities (fair value is less than cost or amortized cost) for which an other-than-temporary impairment has not been recognized in earnings as a realized loss (including securities with a recognized other-than-temporary impairment for non-interest related declines when a non-recognized interest related impairment remains):

a) The aggregate amount of unrealized losses:

1. Less than 12 Months	\$	64,074
2. 12 Months or Longer	\$	262,284

b)The aggregate related fair value of securities with unrealized losses:

1. Less than 12 Months	\$	2,422,115
2. 12 Months or Longer	\$	1,004,701

- (5) The Company employs a systematic methodology to determine if a decline in market value below book/adjusted carrying value is other-than-temporary. In determining whether a decline in fair value below book/adjusted carrying value is other-than-temporary, the Company evaluates several factors and circumstances, including the issuer’s overall financial condition; the issuer’s credit and financial strength ratings; the issuer’s financial performance, including earnings trends, dividend payments, and asset quality; any specific events which may influence the operations of the issuer including governmental actions; a weakening of the general market conditions in the industry or geographic region in which the issuer operates; the length of time and degree to which the fair value of an issuer’s securities remains below cost; the Company’s intent and ability to hold the security until such time to allow for the expected recovery in value; and with respect to fixed maturity investments, any factors that might raise doubt about the issuer’s ability to pay all amounts due according to the contractual terms. These factors are applied to all securities.

E., F., G., H., I., J., K.

Not applicable

L. Restricted Assets

1. Restricted Assets (Including Pledged)

Restricted Asset Category	Gross (Admitted & Nonadmitted) Restricted						
	Current Year					6	7
	1	2	3	4	5		
	Total General Account (G/A)	G/A Supporting Protected Cell Account Activity (a)	Total Protected Cell Account Restricted Assets	Protected Cell Account Assets Supporting G/A Activity (b)	Total (1 plus 3)	Total From Prior Year	Increase/ (Decrease) (5 minus 6)
a. Subject to contractual obligation for which liability is not shown	\$ -	\$ -	\$ -	\$ -	\$ -	\$ -	\$ -
b. Collateral held under security lending agreements	\$ -	\$ -	\$ -	\$ -	\$ -	\$ -	\$ -
c. Subject to repurchase agreements	\$ -	\$ -	\$ -	\$ -	\$ -	\$ -	\$ -
d. Subject to reverse repurchase agreements	\$ -	\$ -	\$ -	\$ -	\$ -	\$ -	\$ -
e. Subject to dollar repurchase agreements	\$ -	\$ -	\$ -	\$ -	\$ -	\$ -	\$ -
f. Subject to dollar reverse repurchase agreements	\$ -	\$ -	\$ -	\$ -	\$ -	\$ -	\$ -
g. Placed under option contracts	\$ -	\$ -	\$ -	\$ -	\$ -	\$ -	\$ -
h. Letter stock or securities restricted as to sale - excluding FHLB capital stock	\$ -	\$ -	\$ -	\$ -	\$ -	\$ -	\$ -
i. FHLB capital stock	\$ -	\$ -	\$ -	\$ -	\$ -	\$ -	\$ -
j. On deposit with states	\$ 6,886,230	\$ -	\$ -	\$ -	\$ 6,886,230	\$ 6,668,364	\$ 217,866
k. On deposit with other regulatory bodies	\$ -	\$ -	\$ -	\$ -	\$ -	\$ -	\$ -
l. Pledged collateral to FHLB (including assets backing funding agreements)	\$ -	\$ -	\$ -	\$ -	\$ -	\$ -	\$ -
m. Pledged as collateral not captured in other categories	\$ -	\$ -	\$ -	\$ -	\$ -	\$ -	\$ -
n. Other restricted assets	\$ -	\$ -	\$ -	\$ -	\$ -	\$ -	\$ -
o. Total Restricted Assets (Sum of a through n)	\$ 6,886,230	\$ -	\$ -	\$ -	\$ 6,886,230	\$ 6,668,364	\$ 217,866

(a) Subset of Column 1

(b) Subset of Column 3

NOTES TO FINANCIAL STATEMENTS

Restricted Asset Category	Current Year			
	8	9	Percentage	
			10	11
	Total Non-admitted Restricted	Total Admitted Restricted (5 minus 8)	Gross (Admitted & Non-admitted) Restricted to Total Assets (c)	Admitted Restricted to Total Admitted Assets (d)
a. Subject to contractual obligation for which liability is not shown	\$ -	\$ -	0.000%	0.000%
b. Collateral held under security lending agreements	\$ -	\$ -	0.000%	0.000%
c. Subject to repurchase agreements	\$ -	\$ -	0.000%	0.000%
d. Subject to reverse repurchase agreements	\$ -	\$ -	0.000%	0.000%
e. Subject to dollar repurchase agreements	\$ -	\$ -	0.000%	0.000%
f. Subject to dollar reverse repurchase agreements	\$ -	\$ -	0.000%	0.000%
g. Placed under option contracts	\$ -	\$ -	0.000%	0.000%
h. Letter stock or securities restricted as to sale - excluding FHLB capital stock	\$ -	\$ -	0.000%	0.000%
i. FHLB capital stock	\$ -	\$ -	0.000%	0.000%
j. On deposit with states	\$ -	\$ 6,886,230	24.063%	24.063%
k. On deposit with other regulatory bodies	\$ -	\$ -	0.000%	0.000%
l. Pledged collateral to FHLB (including assets backing funding agreements)	\$ -	\$ -	0.000%	0.000%
m. Pledged as collateral not captured in other categories	\$ -	\$ -	0.000%	0.000%
n. Other restricted assets	\$ -	\$ -	0.000%	0.000%
o. Total Restricted Assets (Sum of a through n)	\$ -	\$ 6,886,230	24.063%	24.063%

(c) Column 5 divided by Asset Page, Column 1, Line 28
(d) Column 9 divided by Asset Page, Column 3, Line 28

2. Detail of Assets Pledged as Collateral Not Captured in Other Categories (Contracts That Share Similar Characteristics, Such as Reinsurance and Derivatives, Are Reported in the Aggregate)

Not applicable

3. Detail of Other Restricted Assets (Contracts That Share Similar Characteristics, Such as Reinsurance and Derivatives, Are Reported in the Aggregate)

Not applicable

4. Collateral Received and Reflected as Assets Within the Reporting Entity's Financial Statements

Not applicable

M., N., O., P.

Not applicable

Q. Prepayment Penalty and Acceleration Fees

	General Account	Protected Cell
1. Number of CUSIPs	1	0
2. Aggregate Amount of Investment Income	\$ 1,806	\$ -

R., S.

Not Applicable

NOTE 6 Joint Ventures, Partnerships and Limited Liability Companies

Not applicable

NOTE 7 Investment Income

A., B.

Not Applicable

C. The gross, nonadmitted and admitted amounts for interest income due and accrued.

Interest Income Due and Accrued	Amount
1. Gross	\$ 209,486
2. Nonadmitted	\$ -
3. Admitted	\$ 209,486

D., E.

Not Applicable

NOTE 8 Derivative Instruments

Not applicable

ANNUAL STATEMENT FOR THE YEAR 2024 OF THE ALLMERICA FINANCIAL ALLIANCE INSURANCE COMPANY

NOTES TO FINANCIAL STATEMENTS

NOTE 9 Income Taxes

A. The components of the net deferred tax asset/(liability) at the end of current period are as follows:

1.

	As of End of Current Period			12/31/2023			Change		
	(1) Ordinary	(2) Capital	(3) (Col. 1 + 2) Total	(4) Ordinary	(5) Capital	(6) (Col. 4 + 5) Total	(7) (Col. 1 - 4) Ordinary	(8) (Col. 2 - 5) Capital	(9) (Col. 7 + 8) Total
(a) Gross Deferred Tax Assets	\$ -	\$ -	\$ -	\$ -	\$ -	\$ -	\$ -	\$ -	\$ -
(b) Statutory Valuation Allowance Adjustment	\$ -	\$ -	\$ -	\$ -	\$ -	\$ -	\$ -	\$ -	\$ -
(c) Adjusted Gross Deferred Tax Assets (1a - 1b)	\$ -	\$ -	\$ -	\$ -	\$ -	\$ -	\$ -	\$ -	\$ -
(d) Deferred Tax Assets Nonadmitted	\$ -	\$ -	\$ -	\$ -	\$ -	\$ -	\$ -	\$ -	\$ -
(e) Subtotal Net Admitted Deferred Tax Asset (1c - 1d)	\$ -	\$ -	\$ -	\$ -	\$ -	\$ -	\$ -	\$ -	\$ -
(f) Deferred Tax Liabilities	\$ -	\$ 25,914	\$ 25,914	\$ -	\$ 21,072	\$ 21,072	\$ -	\$ 4,842	\$ 4,842
(g) Net Admitted Deferred Tax Asset/(Net Deferred Tax Liability) (1e - 1f)	\$ -	\$ (25,914)	\$ (25,914)	\$ -	\$ (21,072)	\$ (21,072)	\$ -	\$ (4,842)	\$ (4,842)

2.

	As of End of Current Period			12/31/2023			Change		
	(1) Ordinary	(2) Capital	(3) (Col. 1 + 2) Total	(4) Ordinary	(5) Capital	(6) (Col. 4 + 5) Total	(7) (Col. 1 - 4) Ordinary	(8) (Col. 2 - 5) Capital	(9) (Col. 7 + 8) Total
Admission Calculation Components SSAP No. 101									
(a) Federal Income Taxes Paid In Prior Years Recoverable Through Loss Carrybacks	\$ -	\$ -	\$ -	\$ -	\$ -	\$ -	\$ -	\$ -	\$ -
(b) Adjusted Gross Deferred Tax Assets Expected To Be Realized (Excluding The Amount Of Deferred Tax Assets From 2(a) above) After Application of the Threshold Limitation. (The Lesser of 2(b)1 and 2(b)2 Below)	\$ -	\$ -	\$ -	\$ -	\$ -	\$ -	\$ -	\$ -	\$ -
1. Adjusted Gross Deferred Tax Assets Expected to be Realized Following the Balance Sheet Date.	\$ -	\$ -	\$ -	\$ -	\$ -	\$ -	\$ -	\$ -	\$ -
2. Adjusted Gross Deferred Tax Assets Allowed per Limitation Threshold.	XXX	XXX	\$4,291,896	XXX	XXX	\$4,340,328	XXX	XXX	\$ (48,432)
(c) Adjusted Gross Deferred Tax Assets (Excluding The Amount Of Deferred Tax Assets From 2(a) and 2(b) above) Offset by Gross Deferred Tax Liabilities.	\$ -	\$ -	\$ -	\$ -	\$ -	\$ -	\$ -	\$ -	\$ -
(d) Deferred Tax Assets Admitted as the result of application of SSAP No. 101. Total (2(a) + 2(b) + 2(c))	\$ -	\$ -	\$ -	\$ -	\$ -	\$ -	\$ -	\$ -	\$ -

3.

	2024	2023
a. Ratio Percentage Used To Determine Recovery Period And Threshold Limitation Amount	13491%	13689%
b. Amount Of Adjusted Capital And Surplus Used To Determine Recovery Period And Threshold Limitation In 2(b)2 Above	\$ 28,586,725	\$ 28,914,445

4. Tax Planning Strategies

a. There is no financial impact of the Company's tax planning strategies.	
b. Do the Company's tax-planning strategies include the use of reinsurance?	Yes [] No [X]

B. The Company does not have any deferred tax liabilities that are not recognized for amounts described in Accounting Standards Codification 740, Income Tax.

ANNUAL STATEMENT FOR THE YEAR 2024 OF THE ALLMERICA FINANCIAL ALLIANCE INSURANCE COMPANY

NOTES TO FINANCIAL STATEMENTS

D. Reconciliation of Federal Income Tax Rate to Actual Effective Tax Rate

The significant items causing a difference between the statutory federal income tax rate and the Company's effective income tax rate are as follows:

	As of End of Current Period	
	Tax	Rate
Tax provision at statutory rate	\$ 178,354	21.0%
Tax exempt income deduction	\$ (2,240)	-0.3%
Return to provision & other	\$ 913	0.1%
Total	<u>\$ 177,027</u>	<u>20.8%</u>

	As of End of Current Period	
	Tax	Rate
Federal income taxes incurred	\$ 193,210	22.7%
Realized capital gains tax	\$ (21,025)	-2.5%
Change in net deferred income taxes	\$ 4,842	0.6%
Total statutory income taxes	<u>\$ 177,027</u>	<u>20.8%</u>

E. Operating Loss and Tax Credit Carryforwards

1. At the end of the current reporting period, the Company has no net operating loss carryforwards and no capital loss carryforwards.
2. The Company has the following federal income taxes which are available for recoupment in the event of future losses:

For the tax year 2023:

\$ 72,485

For the tax year 2024:

\$ 176,276
3. At the end of the current reporting period, the Company has no deposits under section 6603 of the Internal Revenue Service Code.

F. Consolidated Federal Income Tax Return

1. The Company's Federal Income Tax Return is consolidated with the following affiliated companies:

440 Lincoln Street Holding Company LLC	Opus Investment Management, Inc.
AIX, Inc.	Professionals Direct, Inc.
AIX Specialty Insurance Company	The Hanover American Insurance Company
Allmerica Financial Benefit Insurance Company	The Hanover Atlantic Insurance Company Ltd.
Allmerica Plus Insurance Agency, Inc.	The Hanover Casualty Company
Campania Holding Company, Inc.	The Hanover Insurance Company
Campmed Casualty & Indemnity Company, Inc.	The Hanover Insurance Group, Inc.
Citizens Insurance Company of America	The Hanover National Insurance Company
Citizens Insurance Company of Illinois	VeraVest Investments, Inc.
Citizens Insurance Company of Ohio	Verlan Fire Insurance Company
Citizens Insurance Company of the Midwest	Verlan Holdings, Inc.
Educators Insurance Agency, Inc.	
Hanover Specialty Insurance Brokers, Inc.	
Massachusetts Bay Insurance Company	
NOVA Casualty Company	

2. The Board of Directors has delegated to Company Management, the development and maintenance of appropriate Federal Income Tax allocation policies and procedures, which are subject to written agreement between the companies. The Federal Income tax for all subsidiaries in the consolidated return of The Hanover Insurance Group, Inc. ("THG") is calculated on a separate return basis. Any current tax liability is paid to THG. Tax benefits resulting from taxable operating losses or credits of THG's subsidiaries are reimbursed to the subsidiary when such losses or credits can be utilized on a consolidated return basis.

G. The Company has no federal or foreign income tax loss contingencies, for which it is reasonably possible that the total liability will significantly increase within 12 months of the reporting date.

H. Repatriation Transition Tax (RTT)

Not applicable

I. Alternative Minimum Tax (AMT) Credit

Not applicable

NOTE 10 Information Concerning Parent, Subsidiaries, Affiliates and Other Related Parties

A. Nature of Relationships

The Company is a wholly-owned subsidiary of The Hanover Insurance Company ("Hanover") which, in turn, is a wholly-owned subsidiary of Opus Investment Management, Inc. ("Opus"), which, in turn, is a wholly-owned non-insurance subsidiary of THG, a publicly traded company incorporated in Delaware.

B. Detail of Transactions Greater than 1/2% of Admitted Assets

On November 7, 2024, the Company declared an ordinary common stock dividend to the parent company, Hanover, which was settled on November 21, 2024, by transferring bonds at fair value of \$984,202, accrued interest of \$11,508 and cash in the amount of \$4,290. There were net realized losses in the amount of \$3,547 as a result of this transaction.

C. Transactions with related party who are not reported on Schedule Y

Not applicable

D. Amounts Due to or from Related Parties

At the end of the current reporting period, the Company reported \$2,407 as amounts payable to an affiliate company. These arrangements require that intercompany balances be settled within 30 days.

ANNUAL STATEMENT FOR THE YEAR 2024 OF THE ALLMERICA FINANCIAL ALLIANCE INSURANCE COMPANY

NOTES TO FINANCIAL STATEMENTS

E. Management, Service Contracts, Cost Sharing Arrangements

Companies affiliated with Hanover have entered into an intercompany Consolidated Service Agreement. Under the agreement, legal entities will be charged the cost of the service provided or expenses paid by the entity providing the service or paying the expense. In addition, these entities will be charged a portion of the costs associated with activities that are performed for the good of THG legal entities.

Opus provided investment-related services under an intercompany Advisory Agreement until June 3, 2024, when the agreement was officially canceled.

F. Guarantees or Contingencies for Related Parties

Not applicable

G. Nature of Relationships that Could Affect Operations

All outstanding shares of the Company are owned by Hanover.

H., I., J., K., L., M., N., O.

Not applicable

NOTE 11 Debt

Not applicable

NOTE 12 Retirement Plans, Deferred Compensation, Postemployment Benefits and Compensated Absences and Other Postretirement Benefit Plans

The labor for the Company is provided and paid for by Hanover. As such, the Company is included in the benefit plans in force for Hanover. Charges for actual salary and benefit costs for services provided to the Company by Hanover employees are ceded 100% pursuant to the Company's Intercompany Reinsurance Agreement.

A., B., C., D., E., F., G., H., I.

Not applicable

NOTE 13 Capital and Surplus, Dividend Restrictions and Quasi-Reorganizations

A. Outstanding Shares

The Company has 10,000 shares of \$500 par value common stock authorized and 10,000 shares issued and outstanding.

B. Dividend Rate of Preferred Stock

Not applicable

(C-F) Dividend Restrictions

Pursuant to New Hampshire's statue, the maximum dividend and other distributions that an insurer may pay in any twelve-month period, without prior approval of the New Hampshire Insurance Commissioner, is limited to the lesser of 10% of statutory policyholder surplus as of the preceding December 31, or net income. The Company declared an ordinary dividend of \$1,000,000 to Hanover, on November 7, 2024. Subsequent to November 7, 2025, the maximum dividend payable without prior approval is \$779,218.

(G-M)

Not applicable

NOTE 14 Liabilities, Contingencies and Assessments

A., B., C., D., E., F.

Not applicable

G. All Other Contingencies

The Company routinely engages in various legal proceedings in the normal course of business, including claims for punitive damages. In the opinion of management, none of such contingencies are expected to have a material effect on the Company's financial position, although it is possible that the results of operations in a particular quarter or annual period would be materially affected by an adverse development or unfavorable outcome.

NOTE 15 Leases

The Company has no material lease obligations at this time.

NOTE 16 Information About Financial Instruments With Off-Balance Sheet Risk and Financial Instruments With Concentrations of Credit Risk

Not applicable

ANNUAL STATEMENT FOR THE YEAR 2024 OF THE ALLMERICA FINANCIAL ALLIANCE INSURANCE COMPANY

NOTES TO FINANCIAL STATEMENTS

NOTE 17 Sale, Transfer and Servicing of Financial Assets and Extinguishments of Liabilities

- A.,B.

Not applicable
- C. Wash Sales

The Company generally does not sell and reacquire securities within 30 days of the sale date. There are no wash sale transactions with a NAIC designation of 3 or below in the current year.

NOTE 18 Gain or Loss to the Reporting Entity from Uninsured Plans and the Uninsured Portion of Partially Insured Plans

Not applicable

NOTE 19 Direct Premium Written/Produced by Managing General Agents/Third Party Administrators

Not applicable

NOTE 20 Fair Value Measurements

- A.

(1) Fair Value Measurements at Reporting Date

(a) There were no assets carried at fair value at the end of the reporting period.

(b) There were no liabilities carried at fair value at the end of the reporting period.

(2) The company does not have any Level 3 assets or liabilities measured at fair value at the end of the reporting period.

(3) The reporting entity's policy is to recognize transfers in and transfers out as of the actual date of the event or change in circumstances that caused the transfer.

(4) For fair value measurements categorized within Level 2 of the fair value hierarchy, fair values of bonds are obtained by a quoted market price if available, otherwise, fair values are estimated using independent pricing sources or internally developed pricing models using discounted cash flow analyses.

The Company utilizes a third party pricing service for the valuation of the majority of its fixed maturity securities and receives one quote per security. When quoted market prices in an active market are available, they are provided by the pricing service as the fair value and such values are classified as Level 1. Since fixed maturities other than U.S. Treasury securities generally do not trade on a daily basis, the pricing service prepares estimates of fair value for those securities using pricing applications based on a market approach. Inputs into the fair value pricing applications which are common to all asset classes include benchmark U.S. Treasury security yield curves, reported trades of identical or similar fixed maturity securities, broker/dealer quotes of identical or similar fixed maturity securities and structural characteristics of the security, such as maturity date, coupon, mandatory principal payment dates, frequency of interest and principal payments and optional principal redemption features. Inputs into the fair value applications that are unique by asset class include, but are not limited to:

 - U.S. government – determination of direct versus indirect government support and whether any contingencies exist with respect to the timely payment of principal and interest.
 - All other governments – estimates of appropriate market spread versus underlying related sovereign treasury curves dependent on liquidity and direct or contingent support.
 - Corporate bonds, which are included in Industrial and miscellaneous bonds - overall credit quality, including assessments of the level and variability of: economic sensitivity; liquidity; corporate financial policies; management quality; regulatory environment; competitive position; ownership; restrictive covenants; and security or collateral.
 - Municipal bonds, which are included in States, territories and possessions; Political subdivisions of states, territories and possessions; and Special revenue and special assessment obligations - overall credit quality, including assessments of the level and variability of: sources of payment such as income, sales or property taxes, levies or user fees; credit support such as insurance; state or local economic and political base; natural resource availability; and susceptibility to natural or man-made catastrophic events such as hurricanes, earthquakes or acts of terrorism.
 - Residential mortgage-backed securities, U.S. agency pass-thrus and collateralized mortgage obligations (“CMOs”) which are included in U.S. governments and Special revenue and special assessment obligations - estimates of prepayment speeds based upon: historical prepayment rate trends; underlying collateral interest rates; geographic concentration; vintage year; borrower credit quality characteristics; interest rate and yield curve forecasts; government or monetary authority support programs; tax policies; and delinquency/default trends.
 - Residential mortgage-backed securities, non-agency CMOs, which are included in Industrial and miscellaneous - estimates of prepayment speeds based upon: historical prepayment rate trends; underlying collateral interest rates; geographic concentration; vintage year; borrower credit quality characteristics; interest rate and yield curve forecasts; government or monetary authority support programs; tax policies; delinquency/default trends; and severity of loss upon default and length of time to recover proceeds following default.
 - Commercial mortgage-backed securities, which are included in Industrial and miscellaneous bonds - overall credit quality, including assessments of the value and supply/demand characteristics of: collateral type such as office, retail, residential, lodging, or other; geographic concentration by region, state, metropolitan statistical area and locale; vintage year; historical collateral performance including defeasance, delinquency, default and special servicer trends; and capital structure support features.
 - Asset-backed securities, which are included in Industrial and miscellaneous bonds – overall credit quality, including assessments of the underlying collateral type such as credit card receivables, auto loan receivables and equipment lease receivables; geographic diversification; vintage year; historical collateral performance including delinquency, default and casualty trends; economic conditions influencing use rates and resale values; and contract structural support features.

Generally, all prices provided by the pricing service, except actively traded securities with quoted market prices, are reported as Level 2.

The Company holds privately placed corporate bonds and certain other bonds that do not have an active market and for which the pricing service cannot provide fair values. The Company determines fair values for these securities using either matrix pricing or broker quotes. The Company will use observable market data to the extent it is available, but is also required to use a certain amount of unobservable judgment due to the illiquid nature of the securities involved. Additionally, the Company may obtain nonbinding broker quotes which are reported as Level 3.

(5) Not applicable
- B. Not applicable

ANNUAL STATEMENT FOR THE YEAR 2024 OF THE ALLMERICA FINANCIAL ALLIANCE INSURANCE COMPANY

NOTES TO FINANCIAL STATEMENTS

C. Aggregate fair value for all financial instruments and the level within the fair value hierarchy in which the fair value measurements in their entirety fall.

Type of Financial Instrument	Aggregate Fair Value	Admitted Assets	(Level 1)	(Level 2)	(Level 3)	Net Asset Value (NAV)	Not Practicable (Carrying Value)
Bonds	\$ 26,594,749	\$ 28,223,687	\$ 5,563,817	\$ 21,030,932	\$ -	\$ -	\$ -
Cash and Short-Term Investments	\$ 121,396	\$ 121,396	\$ 121,396	\$ -	\$ -	\$ -	\$ -

D., E.

Not applicable

NOTE 21 Other Items

A. Unusual or Infrequent Items

Not applicable

B. Troubled Debt Restructuring: Debtors

Not applicable

C. Other Disclosures

IBNR loss and loss adjustment expense reserves are allocated to the Company based on the proportion of the Company's earned premiums and case loss reserves relative to other affiliates in the Hanover Insurance Group. Fluctuations by affiliate and state may occur as a result of this re-estimation process.

The Company elected to use rounding to the nearest dollar in reporting amounts in the Statement, except as otherwise directed by instructions.

The Company reported \$0 for premiums receivable due from policyholders, agents and ceding insurers on Page 2 line 15. The Company has no accounts receivable for uninsured plans and amounts due from agents, controlled or controlling persons.

D. Business Interruption Insurance Recoveries

Not applicable

E. State Transferable and Non-transferable Tax Credits

Not applicable

F. Subprime Mortgage Related Risk Exposure

The Company has reviewed its investments in mortgage-backed securities and has determined that these investments are not subprime.

G. Insurance-Linked Securities (ILS) Contracts

Not applicable

H. The Amount That Could Be Realized on Life Insurance Where the Reporting Entity is Owner and Beneficiary or Has Otherwise Obtained Rights to Control the Policy

Not applicable

NOTE 22 Events Subsequent

Not applicable

NOTE 23 Reinsurance

A. Unsecured Reinsurance Recoverables

Individual Reinsurers with Unsecured Reinsurance Recoverables Exceeding 3% of Policyholder Surplus

Individual Reinsurers Who Are Members of a Group			
Group Code	ID Number	Reinsurer Name	Unsecured Amount
88	13-5129825	THE HANOVER INSURANCE COMPANY	\$ 272,954,000

B. Reinsurance Recoverable in Dispute

Not Applicable

ANNUAL STATEMENT FOR THE YEAR 2024 OF THE ALLMERICA FINANCIAL ALLIANCE INSURANCE COMPANY

NOTES TO FINANCIAL STATEMENTS

C. Reinsurance Assumed and Ceded

(1) The following table summarizes ceded and assumed unearned premiums and the related commissions equity at the end of the current reporting period:

	Assumed Reinsurance		Ceded Reinsurance		Net	
	Premium Reserve	Commission Equity	Premium Reserve	Commission Equity	Premium Reserve	Commission Equity
a. Affiliates	\$ -	\$ -	\$ 117,626,480	\$ -	\$(117,626,480)	\$ -
b. All Other	\$ -	\$ -	\$ -	\$ -	\$ -	\$ -
c. Total (a+b)	<u>\$ -</u>	<u>\$ -</u>	<u>\$ 117,626,480</u>	<u>\$ -</u>	<u>\$(117,626,480)</u>	<u>\$ -</u>
d. Direct Unearned Premium Reserve						\$ 117,626,480

(2) Not applicable

(3) Not applicable

D., E., F., G., H., I., J., K.

Not applicable

NOTE 24 Retrospectively Rated Contracts & Contracts Subject to Redetermination

Not Applicable

NOTE 25 Change in Incurred Losses and Loss Adjustment Expenses

Not applicable

NOTE 26 Intercompany Pooling Arrangements

Not applicable

NOTE 27 Structured Settlements

Not applicable

NOTE 28 Health Care Receivables

Not applicable

NOTE 29 Participating Policies

Not applicable

NOTE 30 Premium Deficiency Reserves

1. Liability carried for premium deficiency reserves	\$ -
2. Date of the most recent evaluation of this liability	12/31/2024
3. Was anticipated investment income utilized in the calculation?	Yes [X] No []

NOTE 31 High Deductibles

Not applicable

NOTE 32 Discounting of Liabilities for Unpaid Losses or Unpaid Loss Adjustment Expenses

Not applicable

NOTE 33 Asbestos/Environmental Reserves

Not applicable

NOTE 34 Subscriber Savings Accounts

Not applicable

NOTE 35 Multiple Peril Crop Insurance

Not applicable

NOTE 36 Financial Guaranty Insurance

Not applicable

ANNUAL STATEMENT FOR THE YEAR 2024 OF THE ALLMERICA FINANCIAL ALLIANCE INSURANCE COMPANY

GENERAL INTERROGATORIES

PART 1 - COMMON INTERROGATORIES

GENERAL

1.1

Is the reporting entity a member of an Insurance Holding Company System consisting of two or more affiliated persons, one or more of which is an insurer?
If yes, complete Schedule Y, Parts 1, 1A, 2 and 3.

Yes [X] No []

1.2

If yes, did the reporting entity register and file with its domiciliary State Insurance Commissioner, Director or Superintendent or with such regulatory official of the state of domicile of the principal insurer in the Holding Company System, a registration statement providing disclosure substantially similar to the standards adopted by the National Association of Insurance Commissioners (NAIC) in its Model Insurance Holding Company System Regulatory Act and model regulations pertaining thereto, or is the reporting entity subject to standards and disclosure requirements substantially similar to those required by such Act and regulations?

Yes [X] No [] N/A []

1.3

State Regulating?

NH

1.4

Is the reporting entity publicly traded or a member of a publicly traded group?

Yes [X] No []

1.5

If the response to 1.4 is yes, provide the CIK (Central Index Key) code issued by the SEC for the entity/group.

0000944695

2.1

Has any change been made during the year of this statement in the charter, by-laws, articles of incorporation, or deed of settlement of the reporting entity?

Yes [] No [X]

2.2

If yes, date of change:

3.1

State as of what date the latest financial examination of the reporting entity was made or is being made.

12/31/2019

3.2

State the as of date that the latest financial examination report became available from either the state of domicile or the reporting entity. This date should be the date of the examined balance sheet and not the date the report was completed or released.

12/31/2019

3.3

State as of what date the latest financial examination report became available to other states or the public from either the state of domicile or the reporting entity. This is the release date or completion date of the examination report and not the date of the examination (balance sheet date).

04/01/2021

3.4

By what department or departments?
New Hampshire Department of Insurance

3.5

Have all financial statement adjustments within the latest financial examination report been accounted for in a subsequent financial statement filed with Departments?

Yes [] No [] N/A [X]

3.6

Have all of the recommendations within the latest financial examination report been complied with?

Yes [] No [] N/A [X]

4.1

During the period covered by this statement, did any agent, broker, sales representative, non-affiliated sales/service organization or any combination thereof under common control (other than salaried employees of the reporting entity) receive credit or commissions for or control a substantial part (more than 20 percent of any major line of business measured on direct premiums) of:
4.11 sales of new business?
4.12 renewals?

Yes [] No [X]
Yes [] No [X]

4.2

During the period covered by this statement, did any sales/service organization owned in whole or in part by the reporting entity or an affiliate, receive credit or commissions for or control a substantial part (more than 20 percent of any major line of business measured on direct premiums) of:
4.21 sales of new business?
4.22 renewals?

Yes [] No [X]
Yes [] No [X]

5.1

Has the reporting entity been a party to a merger or consolidation during the period covered by this statement?
If yes, complete and file the merger history data file with the NAIC.

Yes [] No [X]

5.2

If yes, provide the name of the entity, NAIC company code, and state of domicile (use two letter state abbreviation) for any entity that has ceased to exist as a result of the merger or consolidation.

1 Name of Entity	2 NAIC Company Code	3 State of Domicile
.....
.....

6.1

Has the reporting entity had any Certificates of Authority, licenses or registrations (including corporate registration, if applicable) suspended or revoked by any governmental entity during the reporting period?

Yes [] No [X]

6.2

If yes, give full information
.....

7.1

Does any foreign (non-United States) person or entity directly or indirectly control 10% or more of the reporting entity?

Yes [] No [X]

7.2

If yes,
7.21 State the percentage of foreign control
7.22 State the nationality(s) of the foreign person(s) or entity(s); or if the entity is a mutual or reciprocal, the nationality of its manager or attorney-in-fact and identify the type of entity(s) (e.g., individual, corporation, government, manager or attorney-in-fact).

0.0 %

1 Nationality	2 Type of Entity
.....
.....

ANNUAL STATEMENT FOR THE YEAR 2024 OF THE ALLMERICA FINANCIAL ALLIANCE INSURANCE COMPANY

GENERAL INTERROGATORIES

- 8.1 Is the company a subsidiary of a depository institution holding company (DIHC) or a DIHC itself, regulated by the Federal Reserve Board? Yes [] No [X]
- 8.2 If the response to 8.1 is yes, please identify the name of the DIHC.
.....
- 8.3 Is the company affiliated with one or more banks, thrifts or securities firms? Yes [] No [X]
- 8.4 If response to 8.3 is yes, please provide below the names and locations (city and state of the main office) of any affiliates regulated by a federal financial regulatory services agency [i.e. the Federal Reserve Board (FRB), the Office of the Comptroller of the Currency (OCC), the Federal Deposit Insurance Corporation (FDIC) and the Securities Exchange Commission (SEC)] and identify the affiliate's primary federal regulator.

1 Affiliate Name	2 Location (City, State)	3 FRB	4 OCC	5 FDIC	6 SEC
.....

- 8.5 Is the reporting entity a depository institution holding company with significant insurance operations as defined by the Board of Governors of Federal Reserve System or a subsidiary of the depository institution holding company? Yes [] No [X]
- 8.6 If response to 8.5 is no, is the reporting entity a company or subsidiary of a company that has otherwise been made subject to the Federal Reserve Board's capital rule? Yes [] No [X] N/A []
9. What is the name and address of the independent certified public accountant or accounting firm retained to conduct the annual audit?
PricewaterhouseCoopers, LLP, 101 Seaport Boulevard, Suite 500, Boston, MA 02210
- 10.1 Has the insurer been granted any exemptions to the prohibited non-audit services provided by the certified independent public accountant requirements as allowed in Section 7H of the Annual Financial Reporting Model Regulation (Model Audit Rule), or substantially similar state law or regulation? Yes [] No [X]
- 10.2 If the response to 10.1 is yes, provide information related to this exemption:
.....
- 10.3 Has the insurer been granted any exemptions related to the other requirements of the Annual Financial Reporting Model Regulation as allowed for in Section 18A of the Model Regulation, or substantially similar state law or regulation? Yes [] No [X]
- 10.4 If the response to 10.3 is yes, provide information related to this exemption:
.....
- 10.5 Has the reporting entity established an Audit Committee in compliance with the domiciliary state insurance laws? Yes [X] No [] N/A []
- 10.6 If the response to 10.5 is no or n/a, please explain.
.....
11. What is the name, address and affiliation (officer/employee of the reporting entity or actuary/consultant associated with an actuarial consulting firm) of the individual providing the statement of actuarial opinion/certification?
Julie Frechette, Assitant Vice President and Actuary, FCAS, MAAA, 440 Lincoln Street, Worcester, MA 01653
- 12.1 Does the reporting entity own any securities of a real estate holding company or otherwise hold real estate indirectly? Yes [] No [X]
- 12.11 Name of real estate holding company ...
- 12.12 Number of parcels involved 0
- 12.13 Total book/adjusted carrying value\$0
- 12.2 If yes, provide explanation
.....
13. FOR UNITED STATES BRANCHES OF ALIEN REPORTING ENTITIES ONLY:
- 13.1 What changes have been made during the year in the United States manager or the United States trustees of the reporting entity?
.....
- 13.2 Does this statement contain all business transacted for the reporting entity through its United States Branch on risks wherever located? Yes [] No []
- 13.3 Have there been any changes made to any of the trust indentures during the year? Yes [] No []
- 13.4 If answer to (13.3) is yes, has the domiciliary or entry state approved the changes? Yes [] No [] N/A []
- 14.1 Are the senior officers (principal executive officer, principal financial officer, principal accounting officer or controller, or persons performing similar functions) of the reporting entity subject to a code of ethics, which includes the following standards? Yes [X] No []
- 14.1a. Honest and ethical conduct, including the ethical handling of actual or apparent conflicts of interest between personal and professional relationships;
- 14.1b. Full, fair, accurate, timely and understandable disclosure in the periodic reports required to be filed by the reporting entity;
- 14.1c. Compliance with applicable governmental laws, rules and regulations;
- 14.1d. The prompt internal reporting of violations to an appropriate person or persons identified in the code; and
- 14.1e. Accountability for adherence to the code.
- 14.11 If the response to 14.1 is No, please explain:
.....
- 14.2 Has the code of ethics for senior managers been amended? Yes [] No [X]
- 14.21 If the response to 14.2 is yes, provide information related to amendment(s).
.....
- 14.3 Have any provisions of the code of ethics been waived for any of the specified officers? Yes [] No [X]
- 14.31 If the response to 14.3 is yes, provide the nature of any waiver(s).
.....

ANNUAL STATEMENT FOR THE YEAR 2024 OF THE ALLMERICA FINANCIAL ALLIANCE INSURANCE COMPANY

GENERAL INTERROGATORIES

- 15.1 Is the reporting entity the beneficiary of a Letter of Credit that is unrelated to reinsurance where the issuing or confirming bank is not on the SVO Bank List?
- 15.2 If the response to 15.1 is yes, indicate the American Bankers Association (ABA) Routing Number and the name of the issuing or confirming bank of the Letter of Credit and describe the circumstances in which the Letter of Credit is triggered.
- Yes [] No [X]

1 American Bankers Association (ABA) Routing Number	2 Issuing or Confirming Bank Name	3 Circumstances That Can Trigger the Letter of Credit	4 Amount
.....0

BOARD OF DIRECTORS

16. Is the purchase or sale of all investments of the reporting entity passed upon either by the board of directors or a subordinate committee thereof?
17. Does the reporting entity keep a complete permanent record of the proceedings of its board of directors and all subordinate committees thereof?
18. Has the reporting entity an established procedure for disclosure to its board of directors or trustees of any material interest or affiliation on the part of any of its officers, directors, trustees or responsible employees that is in conflict or is likely to conflict with the official duties of such person?
- Yes [X] No []
- Yes [X] No []
- Yes [X] No []

FINANCIAL

19. Has this statement been prepared using a basis of accounting other than Statutory Accounting Principles (e.g., Generally Accepted Accounting Principles)?
- 20.1 Total amount loaned during the year (inclusive of Separate Accounts, exclusive of policy loans):
- 20.2 Total amount of loans outstanding at the end of year (inclusive of Separate Accounts, exclusive of policy loans):
- 21.1 Were any assets reported in this statement subject to a contractual obligation to transfer to another party without the liability for such obligation being reported in the statement?
- 21.2 If yes, state the amount thereof at December 31 of the current year:
- 22.1 Does this statement include payments for assessments as described in the Annual Statement Instructions other than guaranty fund or guaranty association assessments?
- 22.2 If answer is yes:
- 23.1 Does the reporting entity report any amounts due from parent, subsidiaries or affiliates on Page 2 of this statement?
- 23.2 If yes, indicate any amounts receivable from parent included in the Page 2 amount:
- 24.1 Does the insurer utilize third parties to pay agent commissions in which the amounts advanced by the third parties are not settled in full within 90 days?
- 24.2 If the response to 24.1 is yes, identify the third-party that pays the agents and whether they are a related party.
- Yes [] No [X]
- 20.11 To directors or other officers.....\$0
- 20.12 To stockholders not officers.....\$0
- 20.13 Trustees, supreme or grand (Fraternal Only)\$0
- 20.21 To directors or other officers.....\$0
- 20.22 To stockholders not officers.....\$0
- 20.23 Trustees, supreme or grand (Fraternal Only)\$0
- 21.21 Rented from others.....\$0
- 21.22 Borrowed from others.....\$0
- 21.23 Leased from others\$0
- 21.24 Other\$0
- 22.21 Amount paid as losses or risk adjustment \$0
- 22.22 Amount paid as expenses\$0
- 22.23 Other amounts paid\$0
- Yes [] No [X]
- Yes [] No [X]
- Yes [] No [X]
- Yes [] No [X]

Name of Third-Party	Is the Third-Party Agent a Related Party (Yes/No)
.....

INVESTMENT

- 25.01 Were all the stocks, bonds and other securities owned December 31 of current year, over which the reporting entity has exclusive control, in the actual possession of the reporting entity on said date? (other than securities lending programs addressed in 25.03).....
- Yes [X] No []

ANNUAL STATEMENT FOR THE YEAR 2024 OF THE ALLMERICA FINANCIAL ALLIANCE INSURANCE COMPANY

GENERAL INTERROGATORIES

25.02 If no, give full and complete information, relating thereto

25.03 For securities lending programs, provide a description of the program including value for collateral and amount of loaned securities, and whether collateral is carried on or off-balance sheet. (an alternative is to reference Note 17 where this information is also provided)
None- SEC lending program has been discontinued

25.04 For the reporting entity's securities lending program, report amount of collateral for conforming programs as outlined in the Risk-Based Capital Instructions. \$ 0

25.05 For the reporting entity's securities lending program, report amount of collateral for other programs. \$ 0

25.06 Does your securities lending program require 102% (domestic securities) and 105% (foreign securities) from the counterparty at the outset of the contract? Yes [] No [] N/A [X]

25.07 Does the reporting entity non-admit when the collateral received from the counterparty falls below 100%? Yes [] No [] N/A [X]

25.08 Does the reporting entity or the reporting entity's securities lending agent utilize the Master Securities lending Agreement (MSLA) to conduct securities lending? Yes [] No [] N/A [X]

25.09 For the reporting entity's securities lending program state the amount of the following as of December 31 of the current year:

25.091 Total fair value of reinvested collateral assets reported on Schedule DL, Parts 1 and 2 \$ 0

25.092 Total book/adjusted carrying value of reinvested collateral assets reported on Schedule DL, Parts 1 and 2 \$ 0

25.093 Total payable for securities lending reported on the liability page \$ 0

26.1 Were any of the stocks, bonds or other assets of the reporting entity owned at December 31 of the current year not exclusively under the control of the reporting entity or has the reporting entity sold or transferred any assets subject to a put option contract that is currently in force? (Exclude securities subject to Interrogatory 21.1 and 25.03). Yes [X] No []

26.2 If yes, state the amount thereof at December 31 of the current year:

26.21 Subject to repurchase agreements \$ 0

26.22 Subject to reverse repurchase agreements \$ 0

26.23 Subject to dollar repurchase agreements \$ 0

26.24 Subject to reverse dollar repurchase agreements \$ 0

26.25 Placed under option agreements \$ 0

26.26 Letter stock or securities restricted as to sale - excluding FHLB Capital Stock \$ 0

26.27 FHLB Capital Stock \$ 0

26.28 On deposit with states 6,886,230

26.29 On deposit with other regulatory bodies \$ 0

26.30 Pledged as collateral - excluding collateral pledged to an FHLB \$ 0

26.31 Pledged as collateral to FHLB - including assets backing funding agreements \$ 0

26.32 Other \$ 0

26.3 For category (26.26) provide the following:

1 Nature of Restriction	2 Description	3 Amount
		0

27.1 Does the reporting entity have any hedging transactions reported on Schedule DB? Yes [] No [X]

27.2 If yes, has a comprehensive description of the hedging program been made available to the domiciliary state? Yes [] No [] N/A [X]
If no, attach a description with this statement.

LINES 27.3 through 27.5: FOR LIFE/FRATERNAL REPORTING ENTITIES ONLY:

27.3 Does the reporting entity utilize derivatives to hedge variable annuity guarantees subject to fluctuations as a result of interest rate sensitivity? Yes [] No []

27.4 If the response to 27.3 is YES, does the reporting entity utilize:

27.41 Special accounting provision of SSAP No. 108 Yes [] No []

27.42 Permitted accounting practice Yes [] No []

27.43 Other accounting guidance Yes [] No []

27.5 By responding YES to 27.41 regarding utilizing the special accounting provisions of SSAP No. 108, the reporting entity attests to the following: Yes [] No []

- The reporting entity has obtained explicit approval from the domiciliary state.
- Hedging strategy subject to the special accounting provisions is consistent with the requirements of VM-21.
- Actuarial certification has been obtained which indicates that the hedging strategy is incorporated within the establishment of VM-21 reserves and provides the impact of the hedging strategy within the Actuarial Guideline Conditional Tail Expectation Amount.
- Financial Officer Certification has been obtained which indicates that the hedging strategy meets the definition of a Clearly Defined Hedging Strategy within VM-21 and that the Clearly Defined Hedging Strategy is the hedging strategy being used by the company in its actual day-to-day risk mitigation efforts.

28.1 Were any preferred stocks or bonds owned as of December 31 of the current year mandatorily convertible into equity, or, at the option of the issuer, convertible into equity? Yes [] No [X]

28.2 If yes, state the amount thereof at December 31 of the current year. \$ 0

29. Excluding items in Schedule E, Part 3 - Special Deposits, real estate, mortgage loans and investments held physically in the reporting entity's offices, vaults or safety deposit boxes, were all stocks, bonds and other securities, owned throughout the current year held pursuant to a custodial agreement with a qualified bank or trust company in accordance with Section 1, III - General Examination Considerations, F. Outsourcing of Critical Functions, Custodial or Safekeeping Agreements of the NAIC Financial Condition Examiners Handbook? Yes [X] No []

29.01 For agreements that comply with the requirements of the NAIC Financial Condition Examiners Handbook, complete the following:

1 Name of Custodian(s)	2 Custodian's Address
Bank of New York Mellon	225 Liberty Street, New York, NY 10286

ANNUAL STATEMENT FOR THE YEAR 2024 OF THE ALLMERICA FINANCIAL ALLIANCE INSURANCE COMPANY

GENERAL INTERROGATORIES

29.02 For all agreements that do not comply with the requirements of the NAIC Financial Condition Examiners Handbook, provide the name, location and a complete explanation:

1 Name(s)	2 Location(s)	3 Complete Explanation(s)
.....

29.03 Have there been any changes, including name changes, in the custodian(s) identified in 29.01 during the current year?..... Yes [] No [X]

29.04 If yes, give full and complete information relating thereto:

1 Old Custodian	2 New Custodian	3 Date of Change	4 Reason
.....

29.05 Investment management – Identify all investment advisors, investment managers, broker/dealers, including individuals that have the authority to make investment decisions on behalf of the reporting entity. This includes both primary and sub-advisors. For assets that are managed internally by employees of the reporting entity, note as such. ["...that have access to the investment accounts"; "...handle securities"]

1 Name of Firm or Individual	2 Affiliation
Wellington Funds (US) LLC	U.....

29.0597 For those firms/individuals listed in the table for Question 29.05, do any firms/individuals unaffiliated with the reporting entity (i.e., designated with a "U") manage more than 10% of the reporting entity's invested assets?..... Yes [X] No []

29.0598 For firms/individuals unaffiliated with the reporting entity (i.e., designated with a "U") listed in the table for Question 29.05, does the total assets under management aggregate to more than 50% of the reporting entity's invested assets?..... Yes [X] No []

29.06 For those firms or individuals listed in the table for 29.05 with an affiliation code of "A" (affiliated) or "U" (unaffiliated), provide the information for the table below.

1 Central Registration Depository Number	2 Name of Firm or Individual	3 Legal Entity Identifier (LEI)	4 Registered With Securities Exchange Commission	5 Investment Management Agreement (IMA) Filed
288313	Wellington Funds (US) LLC	5493007617BARIMGYJ883	NO.....	

30.1 Does the reporting entity have any diversified mutual funds reported in Schedule D - Part 2 (diversified according to the Securities and Exchange Commission (SEC) in the Investment Company Act of 1940 [Section 5(b)(1)])? Yes [] No [X]

30.2 If yes, complete the following schedule:

1 CUSIP #	2 Name of Mutual Fund	3 Book/Adjusted Carrying Value
.....	0
30.2999 - Total		0

30.3 For each mutual fund listed in the table above, complete the following schedule:

1 Name of Mutual Fund (from above table)	2 Name of Significant Holding of the Mutual Fund	3 Amount of Mutual Fund's Book/Adjusted Carrying Value Attributable to the Holding	4 Date of Valuation
.....	0

ANNUAL STATEMENT FOR THE YEAR 2024 OF THE ALLMERICA FINANCIAL ALLIANCE INSURANCE COMPANY

GENERAL INTERROGATORIES

31. Provide the following information for all short-term and long-term bonds and all preferred stocks. Do not substitute amortized value or statement value for fair value.

	1	2	3
	Statement (Admitted) Value	Fair Value	Excess of Statement over Fair Value (-), or Fair Value over Statement (+)
31.1 Bonds	28,223,687	26,594,749	(1,628,938)
31.2 Preferred stocks	0	0	0
31.3 Totals	28,223,687	26,594,749	(1,628,938)

31.4 Describe the sources or methods utilized in determining the fair values:
Fair values are obtained by a quoted market price if available, otherwise, fair values are estimated using independent pricing sources or internally developed pricing models using discounted cash flow analysis.

32.1 Was the rate used to calculate fair value determined by a broker or custodian for any of the securities in Schedule D? Yes [] No [X]

32.2 If the answer to 32.1 is yes, does the reporting entity have a copy of the broker's or custodian's pricing policy (hard copy or electronic copy) for all brokers or custodians used as a pricing source? Yes [] No []

32.3 If the answer to 32.2 is no, describe the reporting entity's process for determining a reliable pricing source for purposes of disclosure of fair value for Schedule D:
.....

33.1 Have all the filing requirements of the Purposes and Procedures Manual of the NAIC Investment Analysis Office been followed? Yes [X] No []

33.2 If no, list exceptions:
.....

34. By self-designating 5GI securities, the reporting entity is certifying the following elements of each self-designated 5GI security:
a. Documentation necessary to permit a full credit analysis of the security does not exist or an NAIC CRP credit rating for an FE or PL security is not available.
b. Issuer or obligor is current on all contracted interest and principal payments.
c. The insurer has an actual expectation of ultimate payment of all contracted interest and principal.
Has the reporting entity self-designated 5GI securities? Yes [] No [X]

35. By self-designating PLGI securities, the reporting entity is certifying its compliance with the requirements as specified in the Purposes and Procedures Manual of the NAIC Investment Analysis Office (P&P Manual) for private letter rating (PLR) securities and the following elements of each self-designated PLGI security:
a. The security was either:
i. issued prior to January 1, 2018 (which is exempt from PLR filing requirements pursuant to the P&P Manual), or
ii. issued from January 1, 2018 to December 31, 2021 and subject to a confidentiality agreement executed prior to January 1, 2022 which confidentiality agreement remains in force, for which an insurance company cannot provide a copy of a private letter rating rationale report to the SVO due to confidentiality or other contractual reasons ("waived submission PLR securities").
b. The reporting entity is holding capital commensurate with the NAIC Designation and NAIC Designation Category reported for the security.
c. The NAIC Designation and NAIC Designation Category were derived from the credit rating assigned by an NAIC CRP in its legal capacity as a NRSRO which is shown on a current private letter rating, dated during the financial statement year, held by the insurer and available for examination by state insurance regulators.
d. Other than for waived submission PLR securities, defined above, on or after January 1, 2024 for any PLR securities issued on or after January 1, 2022, if the reporting entity is not permitted to share this private credit rating or the private rating letter rationale report of the PL security with the SVO, it certifies that it is reporting it as an NAIC 5.B GI and may not assign any other self-designation.
Has the reporting entity self-designated PLGI to securities, all of which meet the above requirement and as specified in the P&P Manual? Yes [] No [X]

36. By assigning FE to a Schedule BA non-registered private fund, the reporting entity is certifying the following elements of each self-designated FE fund:
a. The shares were purchased prior to January 1, 2019.
b. The reporting entity is holding capital commensurate with the NAIC Designation reported for the security.
c. The security had a public credit rating(s) with annual surveillance assigned by an NAIC CRP in its legal capacity as an NRSRO prior to January 1, 2019.
d. The fund only or predominantly holds bonds in its portfolio.
e. The current reported NAIC Designation was derived from the public credit rating(s) with annual surveillance assigned by an NAIC CRP in its legal capacity as an NRSRO.
f. The public credit rating(s) with annual surveillance assigned by an NAIC CRP has not lapsed.
Has the reporting entity assigned FE to Schedule BA non-registered private funds that complied with the above criteria? Yes [] No [X]

37. By rolling/renewing short-term or cash equivalent investments with continued reporting on Schedule DA, Part 1 or Schedule E Part 2 (identified through a code (%) in those investment schedules), the reporting entity is certifying to the following:
a. The investment is a liquid asset that can be terminated by the reporting entity on the current maturity date.
b. If the investment is with a nonrelated party or nonaffiliate, then it reflects an arms-length transaction with renewal completed at the discretion of all involved parties.
c. If the investment is with a related party or affiliate, then the reporting entity has completed robust re-underwriting of the transaction for which documentation is available for regulator review.
d. Short-term and cash equivalent investments that have been renewed/rolled from the prior period that do not meet the criteria in 37.a - 37.c are reported as long-term investments.
Has the reporting entity rolled/renewed short-term or cash equivalent investments in accordance with these criteria? Yes [X] No [] N/A []

ANNUAL STATEMENT FOR THE YEAR 2024 OF THE ALLMERICA FINANCIAL ALLIANCE INSURANCE COMPANY

GENERAL INTERROGATORIES

38.1 Does the reporting entity directly hold cryptocurrencies? Yes [] No [X]

38.2 If the response to 38.1 is yes, on what schedule are they reported?
.....

39.1 Does the reporting entity directly or indirectly accept cryptocurrencies as payments for premiums on policies? Yes [] No [X]

39.2 If the response to 39.1 is yes, are the cryptocurrencies held directly or are they immediately converted to U.S. dollars?
39.21 Held directly Yes [] No []
39.22 Immediately converted to U.S. dollars Yes [] No []

39.3 If the response to 38.1 or 39.1 is yes, list all cryptocurrencies accepted for payments of premiums or that are held directly.

1	2	3
Name of Cryptocurrency	Immediately Converted to USD, Directly Held, or Both	Accepted for Payment of Premiums
.....

OTHER

40.1 Amount of payments to trade associations, service organizations and statistical or rating bureaus, if any?\$0

40.2 List the name of the organization and the amount paid if any such payment represented 25% or more of the total payments to trade associations, service organizations, and statistical or rating bureaus during the period covered by this statement.

1	2
Name	Amount Paid
.....0

41.1 Amount of payments for legal expenses, if any?\$0

41.2 List the name of the firm and the amount paid if any such payment represented 25% or more of the total payments for legal expenses during the period covered by this statement.

1	2
Name	Amount Paid
.....0

42.1 Amount of payments for expenditures in connection with matters before legislative bodies, officers, or departments of government, if any?\$0

42.2 List the name of the firm and the amount paid if any such payment represented 25% or more of the total payment expenditures in connection with matters before legislative bodies, officers, or departments of government during the period covered by this statement.

1	2
Name	Amount Paid
.....0

ANNUAL STATEMENT FOR THE YEAR 2024 OF THE ALLMERICA FINANCIAL ALLIANCE INSURANCE COMPANY

GENERAL INTERROGATORIES

PART 2 - PROPERTY AND CASUALTY INTERROGATORIES

1.1

Does the reporting entity have any direct Medicare Supplement Insurance in force?

Yes [] No [X]

1.2

If yes, indicate premium earned on U. S. business only.

\$ 0

1.3

What portion of Item (1.2) is not reported on the Medicare Supplement Insurance Experience Exhibit?

\$ 0

1.31 Reason for excluding

1.4

Indicate amount of earned premium attributable to Canadian and/or Other Alien not included in Item (1.2) above.

\$ 0

1.5

Indicate total incurred claims on all Medicare Supplement insurance.

\$ 0

1.6

Individual policies:

Most current three years:

1.61 Total premium earned\$ 0

1.62 Total incurred claims\$ 0

1.63 Number of covered lives 0

All years prior to most current three years:

1.64 Total premium earned\$ 0

1.65 Total incurred claims\$ 0

1.66 Number of covered lives 0

1.7

Group policies:

Most current three years:

1.71 Total premium earned\$ 0

1.72 Total incurred claims\$ 0

1.73 Number of covered lives 0

All years prior to most current three years:

1.74 Total premium earned\$ 0

1.75 Total incurred claims\$ 0

1.76 Number of covered lives 0

2.

Health Test:

1

Current Year

2

Prior Year

2.1 Premium Numerator0 0

2.2 Premium Denominator0 0

2.3 Premium Ratio (2.1/2.2)0.000 0.000

2.4 Reserve Numerator0 0

2.5 Reserve Denominator0 0

2.6 Reserve Ratio (2.4/2.5)0.000 0.000

3.1

Did the reporting entity issue participating policies during the calendar year?

Yes [X] No []

3.2

If yes, provide the amount of premium written for participating and/or non-participating policies during the calendar year:

3.21 Participating policies\$ 361,969

3.22 Non-participating policies\$ 236,684,817

4.

For mutual reporting Entities and Reciprocal Exchanges only:

4.1 Does the reporting entity issue assessable policies?

Yes [] No [X]

4.2 Does the reporting entity issue non-assessable policies?

Yes [] No [X]

4.3 If assessable policies are issued, what is the extent of the contingent liability of the policyholders?%

0.0

4.4 Total amount of assessments paid or ordered to be paid during the year on deposit notes or contingent premiums.

\$ 0

5.

For Reciprocal Exchanges Only:

5.1 Does the Exchange appoint local agents?

Yes [] No [X]

5.2 If yes, is the commission paid:

5.21 Out of Attorney's-in-fact compensation..... Yes [] No [] N/A []

5.22 As a direct expense of the exchange..... Yes [] No [] N/A []

5.3

What expenses of the Exchange are not paid out of the compensation of the Attorney-in-fact?

5.4

Has any Attorney-in-fact compensation, contingent on fulfillment of certain conditions, been deferred?

Yes [] No []

5.5

If yes, give full information

16

ANNUAL STATEMENT FOR THE YEAR 2024 OF THE ALLMERICA FINANCIAL ALLIANCE INSURANCE COMPANY

GENERAL INTERROGATORIES

PART 2 - PROPERTY AND CASUALTY INTERROGATORIES

6.1

What provision has this reporting entity made to protect itself from an excessive loss in the event of a catastrophe under a workers' compensation contract issued without limit of loss?
The Company cedes 100% of its business to The Hanover Insurance Company (Hanover). Hanover maintains workers' compensation coverage under its casualty excess of loss reinsurance agreement.

6.2

Describe the method used to estimate this reporting entity's probable maximum insurance loss, and identify the type of insured exposures comprising that probable maximum loss, the locations of concentrations of those exposures and the external resources (such as consulting firms or computer software models), if any, used in the estimation process:
The Company uses multiple models including RMS RiskLink v24 and Verisk/AIR Touchstone v10.1 Catastrophe Modeling software packages to estimate the Company's probable maximum loss. These exposures are a combination of personal and commercial property risks. The major concentration of losses is in the Northeast.

6.3

What provision has this reporting entity made (such as a catastrophic reinsurance program) to protect itself from an excessive loss arising from the types and concentrations of insured exposures comprising its probable maximum property insurance loss?
The Company cedes 100% to the Hanover Insurance Company.

Effective July 1, 2024, we have property catastrophe reinsurance protection up to \$1.9 billion, less a \$200 million with no co-participation for Northeast named storm events. A portion of this coverage is secured through reinsurance agreements supported by catastrophe bonds. This portion contributes reinsurance coverage for Northeast named storms events only. For events other than Northeast named storms, the property catastrophe occurrence excess of loss reinsurance program provides coverage up to \$1.6 billion, less a \$200 million retention, with no co-participation.

We have catastrophe protection through two per occurrence excess of loss reinsurance agreements with Commonwealth Re Ltd. ("Commonwealth Re"), an independent company, licensed as a Special Purpose Insurer in Bermuda. The coverage under the reinsurance agreements is limited to specified personal and commercial property coverage written in the following geographies in the United States: Connecticut, Delaware, District of Columbia, Maine, Maryland, Massachusetts, New Hampshire, New Jersey, New York, Pennsylvania, Rhode Island, Vermont, Virginia and all waters contiguous thereto. Coverage is provided for catastrophe losses from named tropical storms or hurricanes, including all events or perils directly resulting from such storm or storm system, which may include, by way of example and not limitation, hurricane, wind, gusts, typhoon, hail, rain, tornadoes, cyclones, ensuing flood, storm surge, water damage, fire following, sprinkler leakage, riots, vandalism, and collapse. The reinsurance agreements meet the requirements to be accounted for as reinsurance in accordance with the guidance for reinsurance contracts. In connection with these two reinsurance agreements, effective July 1, 2023 ("2023 Agreement") and July 1, 2022 ("2022 Agreement"), Commonwealth Re issued notes (generally referred to as "catastrophe bonds") to unrelated investors for an aggregate principal amount of \$300.0 million, consistent with the amount of coverage provided under the reinsurance agreements as described below. The proceeds have been deposited in a reinsurance trust account.

6.4

Does the reporting entity carry catastrophe reinsurance protection for at least one reinstatement, in an amount sufficient to cover its estimated probable maximum loss attributable to a single loss event or occurrence?

Yes

[]

No

[X]

6.5

If no, describe any arrangements or mechanisms employed by the reporting entity to supplement its catastrophe reinsurance program or to hedge its exposure to uninsured catastrophic loss
The Company cedes 100% of its business to The Hanover Insurance Company.

7.1

Has this reporting entity reinsured any risk with any other entity under a quota share reinsurance contract that includes a provision that would limit the reinsurer's losses below the stated quota share percentage (e.g., a deductible, a loss ratio corridor, a loss cap, an aggregate limit or any similar provisions)?

Yes

[]

No

[X]

7.2

If yes, indicate the number of reinsurance contracts containing such provisions.

0

7.3

If yes, does the amount of reinsurance credit taken reflect the reduction in quota share coverage caused by any applicable limiting provision(s)?

Yes

[]

No

[]

8.1

Has this reporting entity reinsured any risk with any other entity and agreed to release such entity from liability, in whole or in part, from any loss that may occur on this risk, or portion thereof, reinsured?

Yes

[]

No

[X]

8.2

If yes, give full information

9.1

Has the reporting entity ceded any risk under any reinsurance contract (or under multiple contracts with the same reinsurer or its affiliates) for which during the period covered by the statement: (i) it recorded a positive or negative underwriting result greater than 5% of prior year-end surplus as regards policyholders or it reported calendar year written premium ceded or year-end loss and loss expense reserves ceded greater than 5% of prior year-end surplus as regards policyholders; (ii) it accounted for that contract as reinsurance and not as a deposit; and (iii) the contract(s) contain one or more of the following features or other features that would have similar results:
(a) A contract term longer than two years and the contract is noncancellable by the reporting entity during the contract term;
(b) A limited or conditional cancellation provision under which cancellation triggers an obligation by the reporting entity, or an affiliate of the reporting entity, to enter into a new reinsurance contract with the reinsurer, or an affiliate of the reinsurer;
(c) Aggregate stop loss reinsurance coverage;
(d) A unilateral right by either party (or both parties) to commute the reinsurance contract, whether conditional or not, except for such provisions which are only triggered by a decline in the credit status of the other party;
(e) A provision permitting reporting of losses, or payment of losses, less frequently than on a quarterly basis (unless there is no activity during the period); or
(f) Payment schedule, accumulating retentions from multiple years or any features inherently designed to delay timing of the reimbursement to the ceding entity.

Yes

[]

No

[X]

9.2

Has the reporting entity during the period covered by the statement ceded any risk under any reinsurance contract (or under multiple contracts with the same reinsurer or its affiliates), for which, during the period covered by the statement, it recorded a positive or negative underwriting result greater than 5% of prior year-end surplus as regards policyholders or it reported calendar year written premium ceded or year-end loss and loss expense reserves ceded greater than 5% of prior year-end surplus as regards policyholders; excluding cessions to approved pooling arrangements or to captive insurance companies that are directly or indirectly controlling, controlled by, or under common control with (i) one or more unaffiliated policyholders of the reporting entity, or (ii) an association of which one or more unaffiliated policyholders of the reporting entity is a member where:
(a) The written premium ceded to the reinsurer by the reporting entity or its affiliates represents fifty percent (50%) or more of the entire direct and assumed premium written by the reinsurer based on its most recently available financial statement; or
(b) Twenty-five percent (25%) or more of the written premium ceded to the reinsurer has been retroceded back to the reporting entity or its affiliates in a separate reinsurance contract.

Yes

[]

No

[X]

9.3

If yes to 9.1 or 9.2, please provide the following information in the Reinsurance Summary Supplemental Filing for General Interrogatory 9:
(a) The aggregate financial statement impact gross of all such ceded reinsurance contracts on the balance sheet and statement of income;
(b) A summary of the reinsurance contract terms and indicate whether it applies to the contracts meeting the criteria in 9.1 or 9.2; and
(c) A brief discussion of management's principle objectives in entering into the reinsurance contract including the economic purpose to be achieved.

9.4

Except for transactions meeting the requirements of paragraph 36 of SSAP No. 62R - Property and Casualty Reinsurance, has the reporting entity ceded any risk under any reinsurance contract (or multiple contracts with the same reinsurer or its affiliates) during the period covered by the financial statement, and either:
(a) Accounted for that contract as reinsurance (either prospective or retroactive) under statutory accounting principles ("SAP") and as a deposit under generally accepted accounting principles ("GAAP"); or
(b) Accounted for that contract as reinsurance under GAAP and as a deposit under SAP?

Yes

[]

No

[X]

9.5

If yes to 9.4, explain in the Reinsurance Summary Supplemental Filing for General Interrogatory 9 (Section D) why the contract(s) is treated differently for GAAP and SAP.

ANNUAL STATEMENT FOR THE YEAR 2024 OF THE ALLMERICA FINANCIAL ALLIANCE INSURANCE COMPANY

- 9.6 The reporting entity is exempt from the Reinsurance Attestation Supplement under one or more of the following criteria:
- (a) The entity does not utilize reinsurance; or,

Yes [] No [X]
- (b) The entity only engages in a 100% quota share contract with an affiliate and the affiliated or lead company has filed an attestation supplement; or

Yes [X] No []
- (c) The entity has no external cessions and only participates in an intercompany pool and the affiliated or lead company has filed an attestation supplement.

Yes [] No [X]
10. If the reporting entity has assumed risks from another entity, there should be charged on account of such reinsurances a reserve equal to that which the original entity would have been required to charge had it retained the risks. Has this been done?
- Yes [X] No [] N/A []

ANNUAL STATEMENT FOR THE YEAR 2024 OF THE ALLMERICA FINANCIAL ALLIANCE INSURANCE COMPANY

GENERAL INTERROGATORIES

PART 2 - PROPERTY AND CASUALTY INTERROGATORIES

11.1Has the reporting entity guaranteed policies issued by any other entity and now in force?Yes [] No [X]

11.2If yes, give full information
.....

12.1If the reporting entity recorded accrued retrospective premiums on insurance contracts on Line 15.3 of the asset schedule, Page 2, state the amount of corresponding liabilities recorded for:

12.11Unpaid losses\$0

12.12Unpaid underwriting expenses (including loss adjustment expenses)\$0

12.2Of the amount on Line 15.3, Page 2, state the amount which is secured by letters of credit, collateral and other funds.\$0

12.3If the reporting entity underwrites commercial insurance risks, such as workers' compensation, are premium notes or promissory notes accepted from its insureds covering unpaid premiums and/or unpaid losses?Yes [] No [X] N/A []

12.4If yes, provide the range of interest rates charged under such notes during the period covered by this statement:

12.41From0.0 %

12.42To.....0.0 %

12.5Are letters of credit or collateral and other funds received from insureds being utilized by the reporting entity to secure premium notes or promissory notes taken by a reporting entity, or to secure any of the reporting entity's reported direct unpaid loss reserves , including unpaid losses under loss deductible features of commercial policies?Yes [] No [X]

12.6If yes, state the amount thereof at December 31 of the current year:

12.61Letters of Credit\$0

12.62Collateral and other funds.....\$0

13.1Largest net aggregate amount insured in any one risk (excluding workers' compensation):\$0

13.2Does any reinsurance contract considered in the calculation of this amount include an aggregate limit of recovery without also including a reinstatement provision?Yes [] No [X]

13.3State the number of reinsurance contracts (excluding individual facultative risk certificates, but including facultative programs, automatic facilities or facultative obligatory contracts) considered in the calculation of the amount.0

14.1Is the company a cedant in a multiple cedant reinsurance contract?Yes [] No [X]

14.2If yes, please describe the method of allocating and recording reinsurance among the cedants:
.....

14.3If the answer to 14.1 is yes, are the methods described in item 14.2 entirely contained in the respective multiple cedant reinsurance contracts?Yes [] No []

14.4If the answer to 14.3 is no, are all the methods described in 14.2 entirely contained in written agreements?Yes [] No []

14.5If the answer to 14.4 is no, please explain:
.....

15.1Has the reporting entity guaranteed any financed premium accounts?Yes [] No [X]

15.2If yes, give full information
.....

16.1Does the reporting entity write any warranty business?Yes [] No [X]
If yes, disclose the following information for each of the following types of warranty coverage:

	1 Direct Losses Incurred	2 Direct Losses Unpaid	3 Direct Written Premium	4 Direct Premium Unearned	5 Direct Premium Earned
16.11 Home	0	0	0	0	0
16.12 Products	0	0	0	0	0
16.13 Automobile	0	0	0	0	0
16.14 Other*	0	0	0	0	0

* Disclose type of coverage:

.....

17.1Does the reporting entity include amounts recoverable on unauthorized reinsurance in Schedule F - Part 3 that is exempt from the statutory provision for unauthorized reinsurance?Yes [] No [X]

Incurred but not reported losses on contracts in force prior to July 1, 1984, and not subsequently renewed are exempt from the statutory provision for unauthorized reinsurance. Provide the following information for this exemption:

17.11Gross amount of unauthorized reinsurance in Schedule F - Part 3 exempt from the statutory provision for unauthorized reinsurance\$0

17.12Unfunded portion of Interrogatory 17.11\$0

17.13Paid losses and loss adjustment expenses portion of Interrogatory 17.11...\$0

17.14Case reserves portion of Interrogatory 17.11\$0

17.15Incurred but not reported portion of Interrogatory 17.11\$0

17.16Unearned premium portion of Interrogatory 17.11\$0

17.17Contingent commission portion of Interrogatory 17.11\$0

ANNUAL STATEMENT FOR THE YEAR 2024 OF THE ALLMERICA FINANCIAL ALLIANCE INSURANCE COMPANY

GENERAL INTERROGATORIES

PART 2 - PROPERTY AND CASUALTY INTERROGATORIES

- 18.1

Do you act as a custodian for health savings accounts?

Yes [☐] No [☒]
- 18.2

If yes, please provide the amount of custodial funds held as of the reporting date.

\$0
- 18.3

Do you act as an administrator for health savings accounts?

Yes [☐] No [☒]
- 18.4

If yes, please provide the balance of funds administered as of the reporting date.

\$0
19.

Is the reporting entity licensed or chartered, registered, qualified, eligible or writing business in at least two states?

Yes [☒] No [☐]
- 19.1

If no, does the reporting entity assume reinsurance business that covers risks residing in at least one state other than the state of domicile of the reporting entity?

Yes [☐] No [☐]

FIVE-YEAR HISTORICAL DATA

Show amounts in whole dollars only, no cents; show percentages to one decimal place, i.e. 17.6.

	1 2024	2 2023	3 2022	4 2021	5 2020
Gross Premiums Written (Page 8, Part 1B Cols. 1, 2 & 3)					
1. Liability lines (Lines 11, 16, 17, 18 & 19)	134,775,267	126,472,863	114,532,390	100,561,582	98,962,304
2. Property lines (Lines 1, 2, 9, 12, 21 & 26)	102,271,519	88,725,328	76,264,110	62,993,890	59,982,238
3. Property and liability combined lines (Lines 3, 4, 5, 8, 22 & 27)	0	0	0	0	0
4. All other lines (Lines 6, 10, 13, 14, 15, 23, 24, 28, 29, 30 & 34)	0	0	0	0	0
5. Nonproportional reinsurance lines (Lines 31, 32 & 33)	0	0	0	0	0
6. Total (Line 35)	237,046,786	215,198,191	190,796,500	163,555,472	158,944,542
Net Premiums Written (Page 8, Part 1B, Col. 6)					
7. Liability lines (Lines 11, 16, 17, 18 & 19)	0	0	0	0	0
8. Property lines (Lines 1, 2, 9, 12, 21 & 26)	0	0	0	0	0
9. Property and liability combined lines (Lines 3, 4, 5, 8, 22 & 27)	0	0	0	0	0
10. All other lines (Lines 6, 10, 13, 14, 15, 23, 24, 28, 29, 30 & 34)	0	0	0	0	0
11. Nonproportional reinsurance lines (Lines 31, 32 & 33)	0	0	0	0	0
12. Total (Line 35)	0	0	0	0	0
Statement of Income (Page 4)					
13. Net underwriting gain (loss) (Line 8)	0	0	0	0	0
14. Net investment gain (loss) (Line 11)	870,332	651,965	469,223	490,525	557,836
15. Total other income (Line 15)	0	0	0	0	0
16. Dividends to policyholders (Line 17)	0	0	0	0	0
17. Federal and foreign income taxes incurred (Line 19)	193,210	127,765	100,851	104,547	122,398
18. Net income (Line 20)	677,122	524,200	368,372	385,978	435,438
Balance Sheet Lines (Pages 2 and 3)					
19. Total admitted assets excluding protected cell business (Page 2, Line 26, Col. 3)	28,617,781	28,950,215	23,417,703	20,044,718	19,668,010
20. Premiums and considerations (Page 2, Col. 3)					
20.1 In course of collection (Line 15.1)	0	0	0	0	0
20.2 Deferred and not yet due (Line 15.2)	0	0	0	0	0
20.3 Accrued retrospective premiums (Line 15.3)	0	0	0	0	0
21. Total liabilities excluding protected cell business (Page 3, Line 26)	31,056	35,770	18,221	19,160	33,989
22. Losses (Page 3, Line 1)	0	0	0	0	0
23. Loss adjustment expenses (Page 3, Line 3)	0	0	0	0	0
24. Unearned premiums (Page 3, Line 9)	0	0	0	0	0
25. Capital paid up (Page 3, Lines 30 & 31)	5,000,000	5,000,000	5,000,000	5,000,000	5,000,000
26. Surplus as regards policyholders (Page 3, Line 37)	28,586,725	28,914,445	23,399,482	20,025,558	19,634,021
Cash Flow (Page 5)					
27. Net cash from operations (Line 11)	694,210	455,183	376,587	395,421	415,972
Risk-Based Capital Analysis					
28. Total adjusted capital	28,586,725	28,914,445	23,399,482	20,025,558	19,634,021
29. Authorized control level risk-based capital	211,889	211,225	167,470	153,836	97,190
Percentage Distribution of Cash, Cash Equivalents and Invested Assets (Page 2, Col. 3) (Line divided by Page 2, Line 12, Col. 3) x100.0					
30. Bonds (Line 1)	99.4	96.8	98.5	98.1	99.0
31. Stocks (Lines 2.1 & 2.2)	0.0	0.0	0.0	0.0	0.0
32. Mortgage loans on real estate (Lines 3.1 and 3.2)	0.0	0.0	0.0	0.0	0.0
33. Real estate (Lines 4.1, 4.2 & 4.3)	0.0	0.0	0.0	0.0	0.0
34. Cash, cash equivalents and short-term investments (Line 5)	0.4	3.2	1.4	1.9	1.0
35. Contract loans (Line 6)	0.0	0.0	0.0	0.0	0.0
36. Derivatives (Line 7)	0.0	0.0	0.0	0.0	0.0
37. Other invested assets (Line 8)	0.0	0.0	0.0	0.0	0.0
38. Receivables for securities (Line 9)	0.2	0.1	0.1	0.0	0.0
39. Securities lending reinvested collateral assets (Line 10)	0.0	0.0	0.0	0.0	0.0
40. Aggregate write-ins for invested assets (Line 11)	0.0	0.0	0.0	0.0	0.0
41. Cash, cash equivalents and invested assets (Line 12)	100.0	100.0	100.0	100.0	100.0
Investments in Parent, Subsidiaries and Affiliates					
42. Affiliated bonds (Schedule D, Summary, Line 12, Col. 1)	0	0	0	0	0
43. Affiliated preferred stocks (Schedule D, Summary, Line 18, Col. 1)	0	0	0	0	0
44. Affiliated common stocks (Schedule D, Summary, Line 24, Col. 1)	0	0	0	0	0
45. Affiliated short-term investments (subtotals included in Schedule DA Verification, Col. 5, Line 10)	0	0	0	0	0
46. Affiliated mortgage loans on real estate	0	0	0	0	0
47. All other affiliated	0	0	0	0	0
48. Total of above Lines 42 to 47	0	0	0	0	0
49. Total Investment in Parent included in Lines 42 to 47 above	0	0	0	0	0
50. Percentage of investments in parent, subsidiaries and affiliates to surplus as regards policyholders (Line 48 above divided by Page 3, Col. 1, Line 37 x 100.0)	0.0	0.0	0.0	0.0	0.0

FIVE-YEAR HISTORICAL DATA

(Continued)

	1 2024	2 2023	3 2022	4 2021	5 2020
Capital and Surplus Accounts (Page 4)					
51. Net unrealized capital gains (losses) (Line 24)	0	0	0	0	0
52. Dividends to stockholders (Line 35)	(1,000,000)	0	0	0	(400,000)
53. Change in surplus as regards policyholders for the year (Line 38)	(327,720)	5,514,963	3,373,924	391,537	45,568
Gross Losses Paid (Page 9, Part 2, Cols. 1 & 2)					
54. Liability lines (Lines 11, 16, 17, 18 & 19)	73,208,686	67,137,529	58,847,913	46,715,536	54,339,852
55. Property lines (Lines 1, 2, 9, 12, 21 & 26)	58,063,988	65,378,673	49,808,948	34,741,214	31,090,965
56. Property and liability combined lines (Lines 3, 4, 5, 8, 22 & 27)	0	0	0	0	0
57. All other lines (Lines 6, 10, 13, 14, 15, 23, 24, 28, 29, 30 & 34)	0	0	0	0	0
58. Nonproportional reinsurance lines (Lines 31, 32 & 33)	0	0	0	0	0
59. Total (Line 35)	131,272,674	132,516,202	108,656,861	81,456,750	85,430,817
Net Losses Paid (Page 9, Part 2, Col. 4)					
60. Liability lines (Lines 11, 16, 17, 18 & 19)	0	0	0	0	0
61. Property lines (Lines 1, 2, 9, 12, 21 & 26)	0	0	0	0	0
62. Property and liability combined lines (Lines 3, 4, 5, 8, 22 & 27)	0	0	0	0	0
63. All other lines (Lines 6, 10, 13, 14, 15, 23, 24, 28, 29, 30 & 34)	0	0	0	0	0
64. Nonproportional reinsurance lines (Lines 31, 32 & 33)	0	0	0	0	0
65. Total (Line 35)	0	0	0	0	0
Operating Percentages (Page 4) (Line divided by Page 4, Line 1) x 100.0					
66. Premiums earned (Line 1)	100.0	100.0	100.0	100.0	100.0
67. Losses incurred (Line 2)	0.0	0.0	0.0	0.0	0.0
68. Loss expenses incurred (Line 3)	0.0	0.0	0.0	0.0	0.0
69. Other underwriting expenses incurred (Line 4)	0.0	0.0	0.0	0.0	0.0
70. Net underwriting gain (loss) (Line 8)	0.0	0.0	0.0	0.0	0.0
Other Percentages					
71. Other underwriting expenses to net premiums written (Page 4, Lines 4 + 5 - 15 divided by Page 8, Part 1B, Col. 6, Line 35 x 100.0)	0.0	0.0	0.0	0.0	0.0
72. Losses and loss expenses incurred to premiums earned (Page 4, Lines 2 + 3 divided by Page 4, Line 1 x 100.0)	0.0	0.0	0.0	0.0	0.0
73. Net premiums written to policyholders' surplus (Page 8, Part 1B, Col. 6, Line 35 divided by Page 3, Line 37, Col. 1 x 100.0)	0.0	0.0	0.0	0.0	0.0
One Year Loss Development (\$000 omitted)					
74. Development in estimated losses and loss expenses incurred prior to current year (Schedule P - Part 2 - Summary, Line 12, Col. 11)	0	0	0	0	0
75. Percent of development of losses and loss expenses incurred to policyholders' surplus of prior year end (Line 74 above divided by Page 4, Line 21, Col. 1 x 100.0).....	0.0	0.0	0.0	0.0	0.0
Two Year Loss Development (\$000 omitted)					
76. Development in estimated losses and loss expenses incurred two years before the current year and prior year (Schedule P, Part 2 - Summary, Line 12, Col. 12)	0	0	0	0	0
77. Percent of development of losses and loss expenses incurred to reported policyholders' surplus of second prior year end (Line 76 above divided by Page 4, Line 21, Col. 2 x 100.0)	0.0	0.0	0.0	0.0	0.0

NOTE: If a party to a merger, have the two most recent years of this exhibit been restated due to a merger in compliance with the disclosure requirements of SSAP No. 3, Accounting Changes and Correction of Errors?

Yes [] No []

If no, please explain:

SCHEDULE P - ANALYSIS OF LOSSES AND LOSS EXPENSES
SCHEDULE P - PART 1 - SUMMARY

(\$000 OMITTED)

Years in Which Premiums Were Earned and Losses Were Incurred	Premiums Earned			Loss and Loss Expense Payments								12
	1 Direct and Assumed	2 Ceded	3 Net (1 - 2)	Loss Payments		Defense and Cost Containment Payments		Adjusting and Other Payments		10 Salvage and Subrogation Received	11 Total Net Paid Cols (4 - 5 + 6 - 7 + 8 - 9)	Number of Claims Reported Direct and Assumed
				4 Direct and Assumed	5 Ceded	6 Direct and Assumed	7 Ceded	8 Direct and Assumed	9 Ceded			
1. Prior.....	XXX.....	XXX.....	XXX.....	33.....	33.....	18.....	18.....	3.....	3.....	0.....	0.....	XXX.....
2. 2015.....	119,646.....	119,646.....	0.....	78,315.....	78,315.....	2,911.....	2,911.....	14,429.....	14,429.....	0.....	0.....	XXX.....
3. 2016.....	130,691.....	130,691.....	0.....	91,952.....	91,952.....	3,637.....	3,637.....	15,913.....	15,913.....	0.....	0.....	XXX.....
4. 2017.....	142,783.....	142,783.....	0.....	100,319.....	100,319.....	4,251.....	4,251.....	16,528.....	16,528.....	0.....	0.....	XXX.....
5. 2018.....	155,775.....	155,775.....	0.....	107,011.....	107,011.....	4,573.....	4,573.....	15,791.....	15,791.....	0.....	0.....	XXX.....
6. 2019.....	165,773.....	165,773.....	0.....	99,470.....	99,470.....	4,248.....	4,248.....	16,011.....	16,011.....	0.....	0.....	XXX.....
7. 2020.....	161,485.....	161,485.....	0.....	70,286.....	70,286.....	2,495.....	2,495.....	13,456.....	13,456.....	0.....	0.....	XXX.....
8. 2021.....	161,276.....	161,276.....	0.....	82,552.....	82,552.....	2,691.....	2,691.....	13,189.....	13,189.....	0.....	0.....	XXX.....
9. 2022.....	177,352.....	177,352.....	0.....	104,328.....	104,328.....	2,311.....	2,311.....	14,087.....	14,087.....	0.....	0.....	XXX.....
10. 2023.....	206,114.....	206,114.....	0.....	106,797.....	106,797.....	1,627.....	1,627.....	16,036.....	16,036.....	0.....	0.....	XXX.....
11. 2024.....	223,628.....	223,628.....	0.....	77,974.....	77,974.....	415.....	415.....	15,467.....	15,467.....	0.....	0.....	XXX.....
12. Totals.....	XXX.....	XXX.....	XXX.....	919,036.....	919,036.....	29,175.....	29,175.....	150,910.....	150,910.....	0.....	0.....	XXX.....

	Losses Unpaid				Defense and Cost Containment Unpaid				Adjusting and Other Unpaid		23	24	25
	Case Basis		Bulk + IBNR		Case Basis		Bulk + IBNR						
	13	14	15	16	17	18	19	20	21	22			
	Direct and Assumed	Ceded	Direct and Assumed	Ceded	Direct and Assumed	Ceded	Direct and Assumed	Ceded	Direct and Assumed	Ceded			
1. Prior.....	871	871	101	101	0	0	88	88	162	162	0	0	152
2. 2015.....	854	854	44	44	64	64	9	9	3	3	0	0	4
3. 2016.....	820	820	84	84	40	40	20	20	8	8	0	0	11
4. 2017.....	857	857	149	149	43	43	55	55	15	15	0	0	18
5. 2018.....	2,281	2,281	413	413	153	153	142	142	18	18	0	0	24
6. 2019.....	6,427	6,427	872	872	293	293	246	246	43	43	0	0	55
7. 2020.....	3,033	3,033	1,121	1,121	156	156	401	401	30	30	0	0	39
8. 2021.....	7,413	7,413	2,463	2,463	603	603	947	947	74	74	0	0	93
9. 2022.....	9,434	9,434	6,346	6,346	603	603	1,713	1,713	154	154	0	0	200
10. 2023.....	18,822	18,822	14,125	14,125	691	691	3,934	3,934	405	405	0	0	537
11. 2024	23,718	23,718	35,125	35,125	568	568	6,278	6,278	1,996	1,996	0	0	3,110
12. Totals	74,530	74,530	60,844	60,844	3,216	3,216	13,832	13,832	2,906	2,906	0	0	4,243

	Total Losses and Loss Expenses Incurred			Loss and Loss Expense Percentage (Incurred /Premiums Earned)			Nontabular Discount		34 Inter-Company Pooling Participation Percentage	Net Balance Sheet Reserves After Discount	
	26	27	28	29	30	31	32	33		35	36
	Direct and Assumed	Ceded	Net	Direct and Assumed	Ceded	Net	Loss	Loss Expense		Losses Unpaid	Loss Expenses Unpaid
1. Prior.....	XXX.....	XXX.....	XXX.....	XXX.....	XXX.....	XXX.....	0.....	0.....	XXX.....	0.....	0.....
2. 2015.....	96,628.....	96,628.....	0.....	80.8.....	80.8.....	0.0.....	0.....	0.....	0.0.....	0.....	0.....
3. 2016.....	112,474.....	112,474.....	0.....	86.1.....	86.1.....	0.0.....	0.....	0.....	0.0.....	0.....	0.....
4. 2017.....	122,217.....	122,217.....	0.....	85.6.....	85.6.....	0.0.....	0.....	0.....	0.0.....	0.....	0.....
5. 2018.....	130,381.....	130,381.....	0.....	83.7.....	83.7.....	0.0.....	0.....	0.....	0.0.....	0.....	0.....
6. 2019.....	127,610.....	127,610.....	0.....	77.0.....	77.0.....	0.0.....	0.....	0.....	0.0.....	0.....	0.....
7. 2020.....	90,977.....	90,977.....	0.....	56.3.....	56.3.....	0.0.....	0.....	0.....	0.0.....	0.....	0.....
8. 2021.....	109,932.....	109,932.....	0.....	68.2.....	68.2.....	0.0.....	0.....	0.....	0.0.....	0.....	0.....
9. 2022.....	138,975.....	138,975.....	0.....	78.4.....	78.4.....	0.0.....	0.....	0.....	0.0.....	0.....	0.....
10. 2023.....	162,437.....	162,437.....	0.....	78.8.....	78.8.....	0.0.....	0.....	0.....	0.0.....	0.....	0.....
11. 2024.....	161,541.....	161,541.....	0.....	72.2.....	72.2.....	0.0.....	0.....	0.....	0.0.....	0.....	0.....
12. Totals.....	XXX.....	XXX.....	XXX.....	XXX.....	XXX.....	XXX.....	0.....	0.....	XXX.....	0.....	0.....

Note: Parts 2 and 4 are gross of all discounting, including tabular discounting. Part 1 is gross of only nontabular discounting, which is reported in Columns 32 and 33 of Part 1. The tabular discount, if any, is reported in the Notes to Financial Statements which will reconcile Part 1 with Parts 2 and 4.

Schedule P - Part 2 - Summary
N O N E

Schedule P - Part 3 - Summary
N O N E

Schedule P - Part 4 - Summary
N O N E

SCHEDULE T - EXHIBIT OF PREMIUMS WRITTEN

Allocated by States and Territories									
States, Etc.	1 Active Status (a)	Gross Premiums, Including Policy and Membership Fees, Less Return Premiums and Premiums on Policies Not Taken		4 Dividends Paid or Credited to Policyholders on Direct Business	5 Direct Losses Paid (Deducting Salvage)	6 Direct Losses Incurred	7 Direct Losses Unpaid	8 Finance and Service Charges Not Included in Premiums	9 Direct Premiums Written for Federal Purchasing Groups (Included in Column 2)
		2 Direct Premiums Written	3 Direct Premiums Earned						
1. Alabama AL	L	172,849	150,537	0	4,423	18,769	39,275	167	0
2. Alaska AK	L	157	157	0	0	26	26	0	0
3. Arizona AZ	L	418,846	418,894	0	125,621	223,540	200,198	1,813	0
4. Arkansas AR	L	164,251	188,620	0	98,696	63,345	109,731	684	0
5. California CA	N	0	0	0	0	0	0	0	0
6. Colorado CO	L	305,869	348,147	0	324,133	(359,300)	155,833	1,371	0
7. Connecticut CT	L	871,909	851,312	0	143,482	62,422	563,158	1,836	0
8. Delaware DE	L	554,991	542,893	0	33,000	(11,467)	20,731	367	0
9. District of Columbia DC	L	827,321	680,746	0	51,478	105,240	202,964	1,011	0
10. Florida FL	N	0	0	0	0	0	0	0	0
11. Georgia GA	L	2,422,396	2,277,241	0	201,416	381,907	820,784	6,308	0
12. Hawaii HI	L	0	0	0	0	(5)	10	0	0
13. Idaho ID	L	6,084	6,158	0	0	1,805	3,432	24	0
14. Illinois IL	L	71,044,165	72,316,125	0	44,355,887	40,170,149	37,954,182	437,925	0
15. Indiana IN	L	1,324,884	1,246,076	0	303,658	764,847	802,907	2,567	0
16. Iowa IA	L	123,117	98,484	0	21,327	109,266	101,080	95	0
17. Kansas KS	L	42,141	35,904	0	(1,825)	35,229	116,244	132	0
18. Kentucky KY	L	182,003	175,594	0	126,100	5,783	1,183,741	976	0
19. Louisiana LA	L	171,970	171,449	0	266,438	264,424	41,585	582	0
20. Maine ME	L	164,735	191,296	0	9,324	39,580	71,780	99	0
21. Maryland MD	L	1,244,195	1,147,819	0	159,299	658,149	682,968	2,821	0
22. Massachusetts MA	L	56,754	80,193	0	11,014	46,302	83,780	160	0
23. Michigan MI	L	3,205,760	2,963,381	0	412,658	1,764,084	2,715,470	8,655	0
24. Minnesota MN	L	0	0	0	0	0	0	0	0
25. Mississippi MS	L	53,347	45,333	0	0	3,540	8,487	144	0
26. Missouri MO	L	276,830	246,863	0	77,865	124,426	175,859	152	0
27. Montana MT	L	(1,872)	752	0	0	(3,753)	1,987	37	0
28. Nebraska NE	L	5,987	5,560	0	0	407	1,453	21	0
29. Nevada NV	L	262,211	406,623	0	94,915	127,077	185,215	367	0
30. New Hampshire NH	L	1,185,604	1,108,813	0	273,723	537,479	715,505	3,206	0
31. New Jersey NJ	L	495,336	503,396	0	110,678	14,530	479,699	2,357	0
32. New Mexico NM	L	29,960	27,488	0	0	2,534	6,168	187	0
33. New York NY	L	116,268,804	102,844,578	0	67,551,016	69,276,366	71,757,851	700,909	0
34. North Carolina NC	L	2,548,814	2,493,128	0	240,403	480,573	868,564	9,282	0
35. North Dakota ND	L	0	0	0	0	0	0	0	0
36. Ohio OH	L	0	0	0	0	0	0	31	0
37. Oklahoma OK	L	56,916	43,652	0	0	2,586	9,660	103	0
38. Oregon OR	L	122,531	98,185	0	19,730	41,724	61,800	639	0
39. Pennsylvania PA	L	1,047,578	946,773	0	563,984	735,055	492,695	1,849	0
40. Rhode Island RI	L	139,813	136,567	0	116,188	330,297	290,837	399	0
41. South Carolina SC	L	1,135,049	1,133,550	0	260,266	250,487	392,475	2,928	0
42. South Dakota SD	L	3,048	3,017	0	0	389	708	0	0
43. Tennessee TN	L	23,229,926	22,926,643	0	13,855,237	11,993,572	11,056,179	118,133	0
44. Texas TX	L	1,815,663	2,024,736	0	204,739	237,169	772,697	8,085	0
45. Utah UT	L	101,622	131,783	0	3,327	50,015	88,937	669	0
46. Vermont VT	L	897,265	459,291	0	52,741	67,001	247,132	480	0
47. Virginia VA	L	3,872,605	3,940,478	0	1,182,438	843,356	1,818,822	5,018	0
48. Washington WA	L	0	0	0	0	0	0	0	0
49. West Virginia WV	L	67,068	50,887	0	0	6,982	13,094	110	0
50. Wisconsin WI	L	128,284	158,486	0	19,293	24,601	58,317	188	0
51. Wyoming WY	L	0	0	0	0	0	0	0	0
52. American Samoa AS	N	0	0	0	0	0	0	0	0
53. Guam GU	N	0	0	0	0	0	0	0	0
54. Puerto Rico PR	N	0	0	0	0	0	0	0	0
55. U.S. Virgin Islands VI	N	0	0	0	0	0	0	0	0
56. Northern Mariana Islands MP	N	0	0	0	0	0	0	0	0
57. Canada CAN	N	0	0	0	0	0	0	0	0
58. Aggregate other alien OT	XXX	0	0	0	0	0	0	0	0
59. Totals	XXX	237,046,786	223,627,608	0	131,272,672	129,490,508	135,374,020	1,322,887	0
DETAILS OF WRITE-INS									
58001.	XXX								
58002.	XXX								
58003.	XXX								
58998. Summary of remaining write-ins for Line 58 from overflow page	XXX	0	0	0	0	0	0	0	0
58999. Totals (Lines 58001 through 58003 plus 58998)(Line 58 above)	XXX	0	0	0	0	0	0	0	0

(a) Active Status Counts:

1. L - Licensed or Chartered - Licensed insurance carrier or domiciled RRG..... 49

2. R - Registered - Non-domiciled RRGs..... 0

3. E - Eligible - Reporting entities eligible or approved to write surplus lines in the state (other than their state of domicile - see DSLI)..... 0

4. Q - Qualified - Qualified or accredited reinsurer..... 0

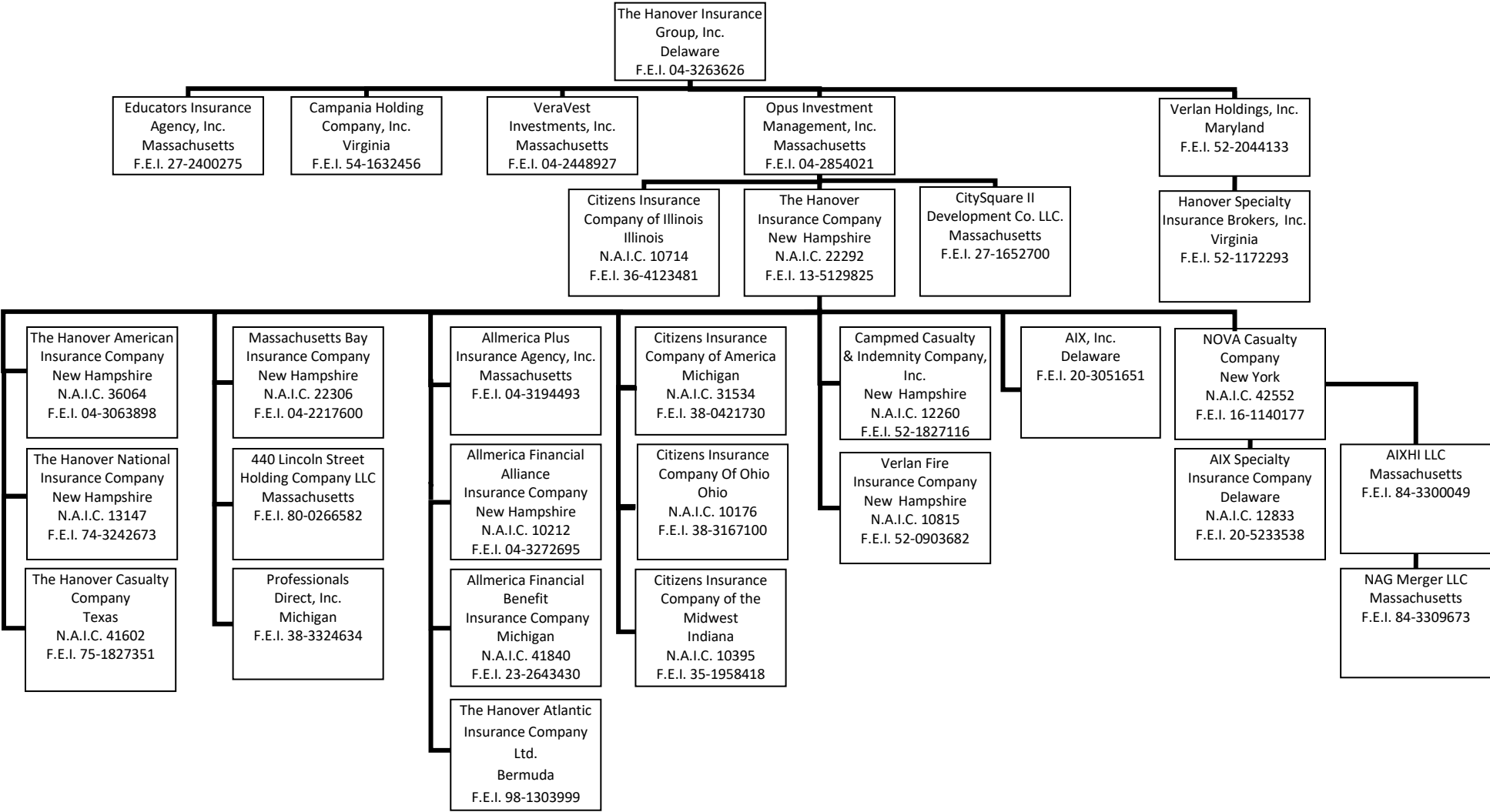
5. D - Domestic Surplus Lines Insurer (DSLII) - Reporting entities authorized to write surplus lines in the state of domicile..... 0

6. N - None of the above - Not allowed to write business in the state... .. 8

(b) Explanation of basis of allocation of premiums by states, etc.

Fire, Allied Lines, Homeowners, Commercial multiple peril, Earthquake, Glass, Burglary, Boiler and Machinery - location of property insured. Ocean Marine - state contract was negotiated. Inland Marine - location of insured. Liability other than auto - location of insured plant. Auto liability and physical damage - place of principal garage. Workers' Compensation - state in which work is performed. Fidelity: forgery bonds - location of insured; of employer; All Other - location of employer. Surety: Judicial bonds - location of court; License bonds - location of obligee; Contracts - location of work; Supply bonds - location of contractors; All other - location of principal.

SCHEDULE Y – INFORMATION CONCERNING ACTIVITIES OF INSURER MEMBERS OF A HOLDING COMPANY GROUP
PART 1 – ORGANIZATIONAL CHART



Note: All Companies are wholly-owned.

NONE